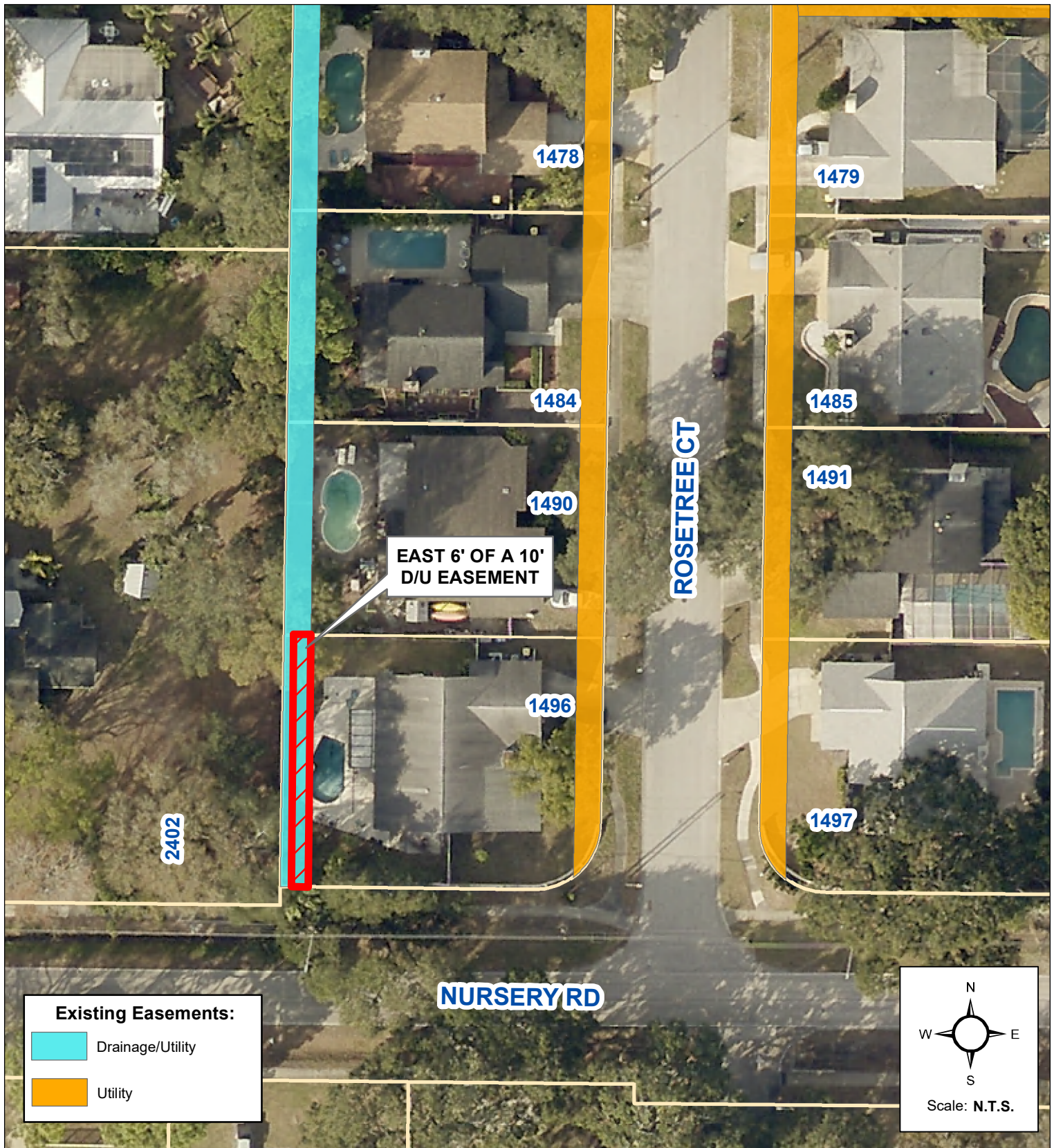


# AERIAL MAP



## Proposed Vacaton of the East 6' of a 10' Drainage & Utility Easement 1496 Rosetree Ct.



Prepared by:  
Engineering Department  
Geographic Technology Division  
100 S. Myrtle Ave, Clearwater, FL 33756  
Ph: (727)562-4750, Fax: (727)526-4755  
www.MyClearwater.com

Grid #: 317B

S-T-R: 19-26s-16e

Aerial Flown 2019

Map Gen By: KN

Reviewed By: RB

Date: 8/16/2021

Page 1 of 1

Document Path: C:\Users\Kieffer.Nyland\City of Clearwater\Engineering Geographic Technology - Location Maps\1496\_Rosetree\_Ct\_EasementVacation.mxd