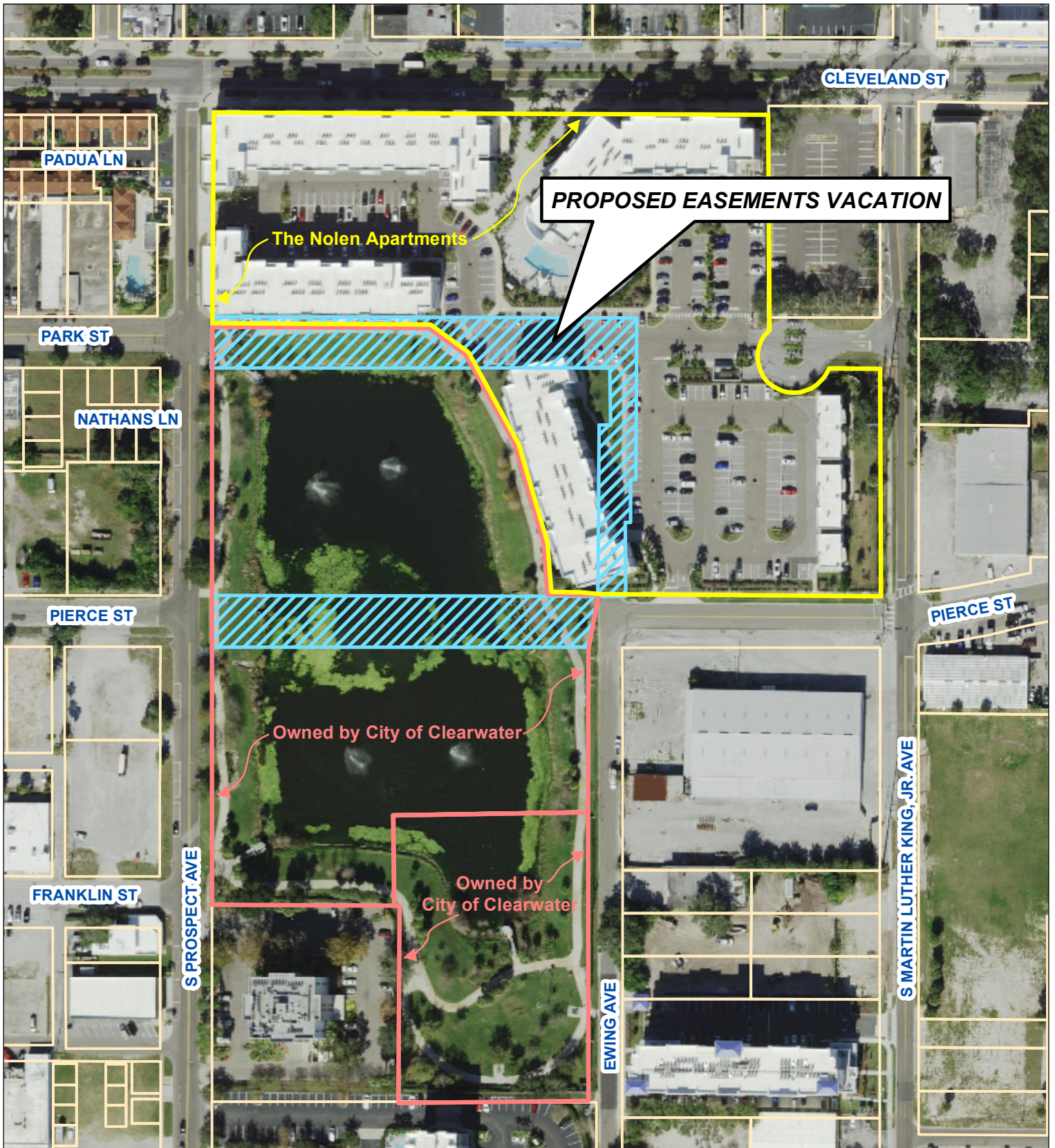


# AERIAL MAP



Prepared by:  
Engineering Department  
Geographic Technology Division  
100 S. Myrtle Ave, Clearwater, FL 33756  
Ph: (727)562-4750, Fax: (727)526-4755  
www.MyClearwater.com

## Proposed Drainage & Utility Easements Vacation at The Nolen Apartments

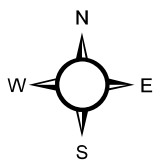
Map Gen By: **WD**

Reviewed By: **JB**

Aerial Flown 2020

Date: **9/7/2021**

Page: 1 of 1



Scale: **N.T.S.**

Document Path: C:\Users\Wioletta.Dabrowski\City of Clearwater\Engineering Geographic Technology - Documents\GIS\Engineering\Location Maps\TheNolenApt\VAC2021-20.mxd