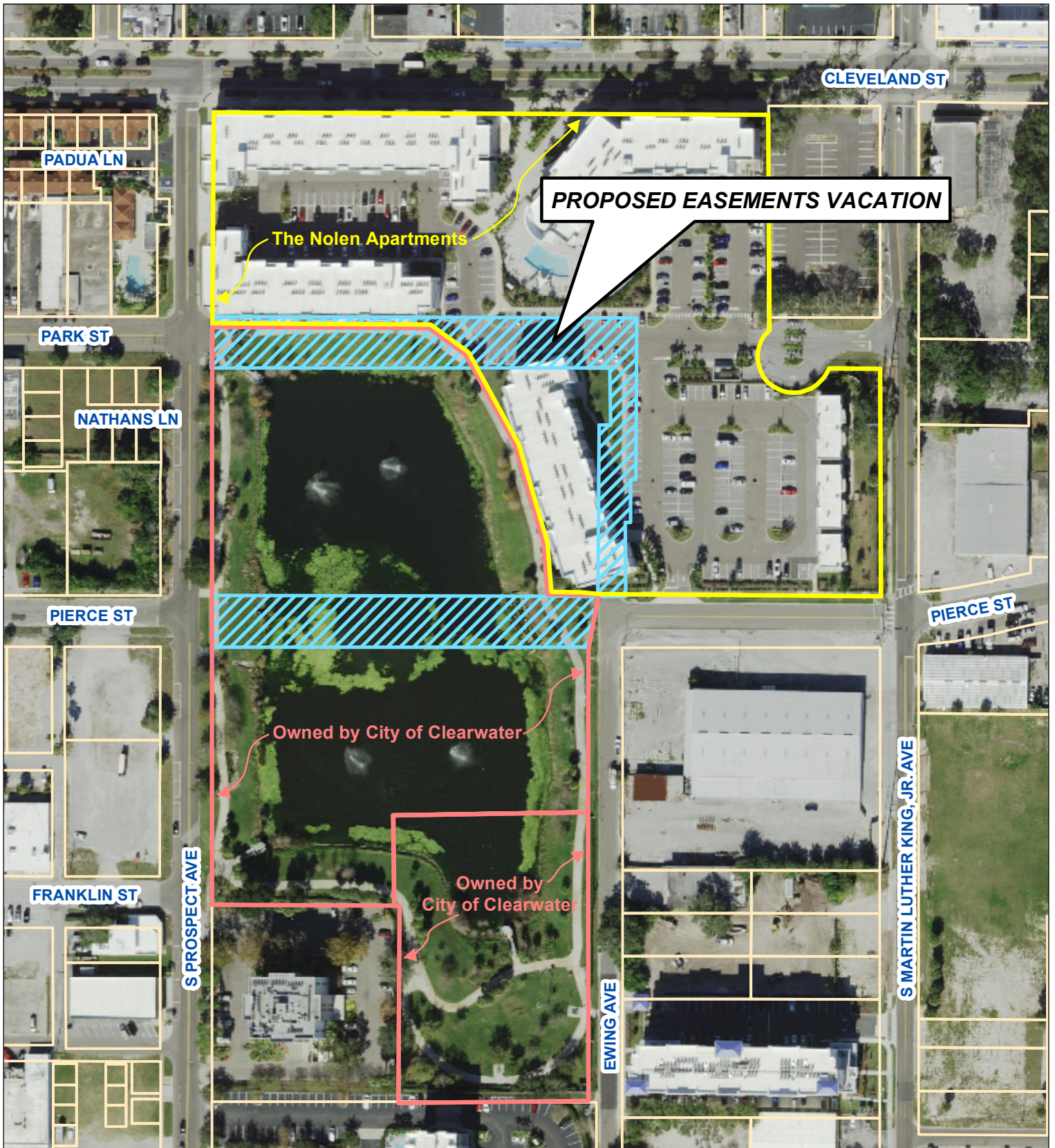


AERIAL MAP



Prepared by:
Engineering Department
Geographic Technology Division
100 S. Myrtle Ave, Clearwater, FL 33756
Ph: (727)562-4750, Fax: (727)526-4755
www.MyClearwater.com

Proposed Drainage & Utility Easements Vacation at The Nolen Apartments

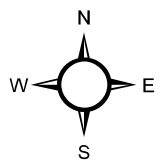
Map Gen By: **WD**

Reviewed By: **JB**

Aerial Flown 2020

Date: **9/7/2021**

Page: 1 of 1



Scale: **N.T.S.**

Document Path: C:\Users\Wioletta.Dabrowski\City of Clearwater\Engineering Geographic Technology - Documents\GIS\Engineering\Location Maps\TheNolenApt\VAC2021-20.mxd