



2

IMAGINE CLEARWATER DESIGN
DESIGN ALTERNATE LOCATIONS



3

IMAGINE CLEARWATER DESIGN
PARKING, SOLAR PANEL, AND SEATING LOCATIONS



4

IMAGINE CLEARWATER DESIGN

CIVIC GATEWAY WATER FEATURE



COST ANALYSIS

- FULL WATER FEATURE - \$850,000



FULL WATER FEATURE (ALTERNATE 2A)

5

IMAGINE CLEARWATER DESIGN
CIVIC GATEWAY SHADE STRUCTURES

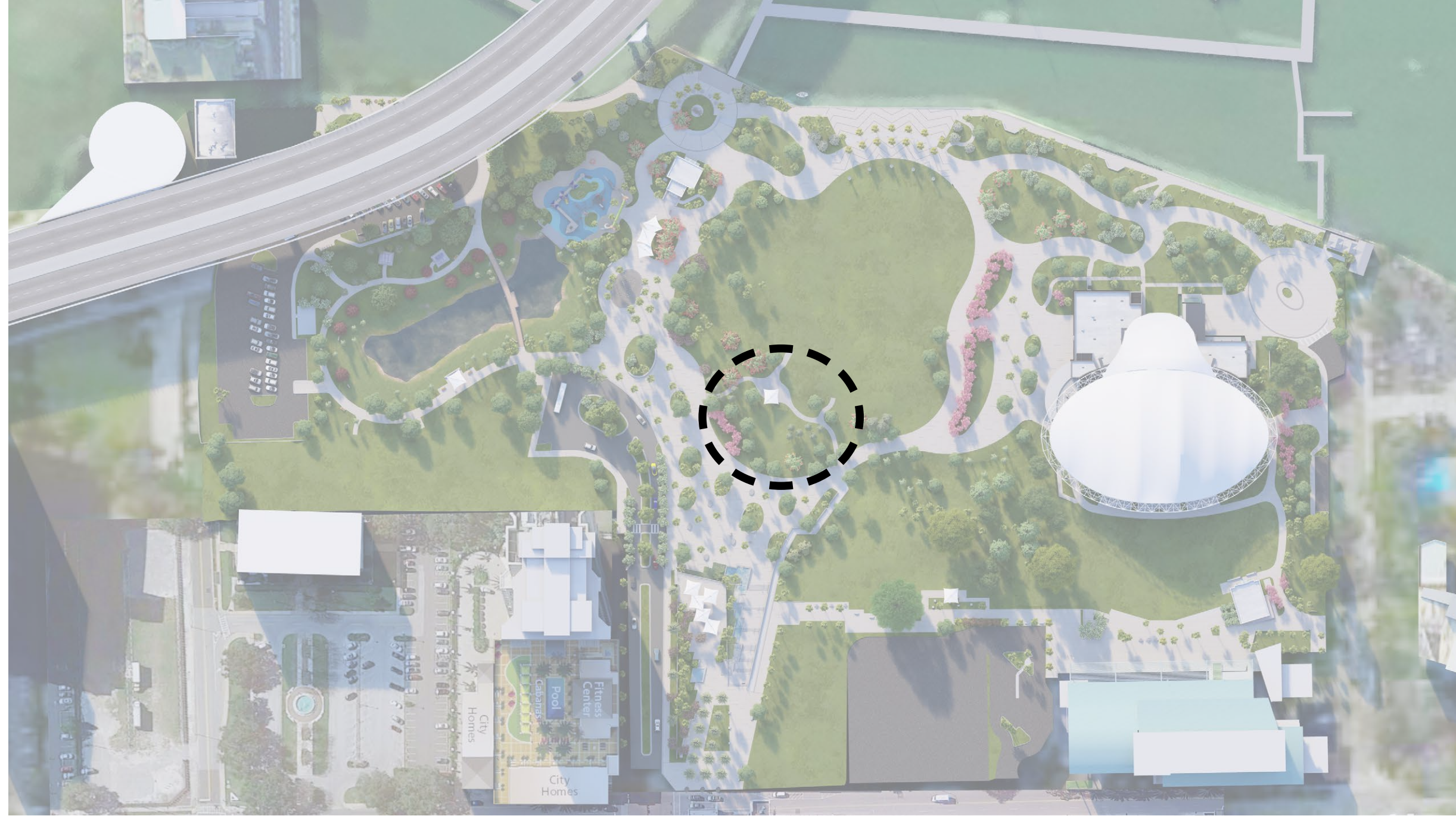


NOTE
• ALL SITE SHADE STRUCTURES SHOWN ARE IN THE BASE BID



CIVIC GATEWAY UPPER PLAZA SHADE STRUCTURES

6 IMAGINE CLEARWATER DESIGN COACHMAN GARDENS



COST ANALYSIS

- NET ADDED ALTERNATE COSTS FOR COACHMAN GARDEN -
\$ 145,000 TOTAL INCLUDING DIRECT & INDIRECT COST

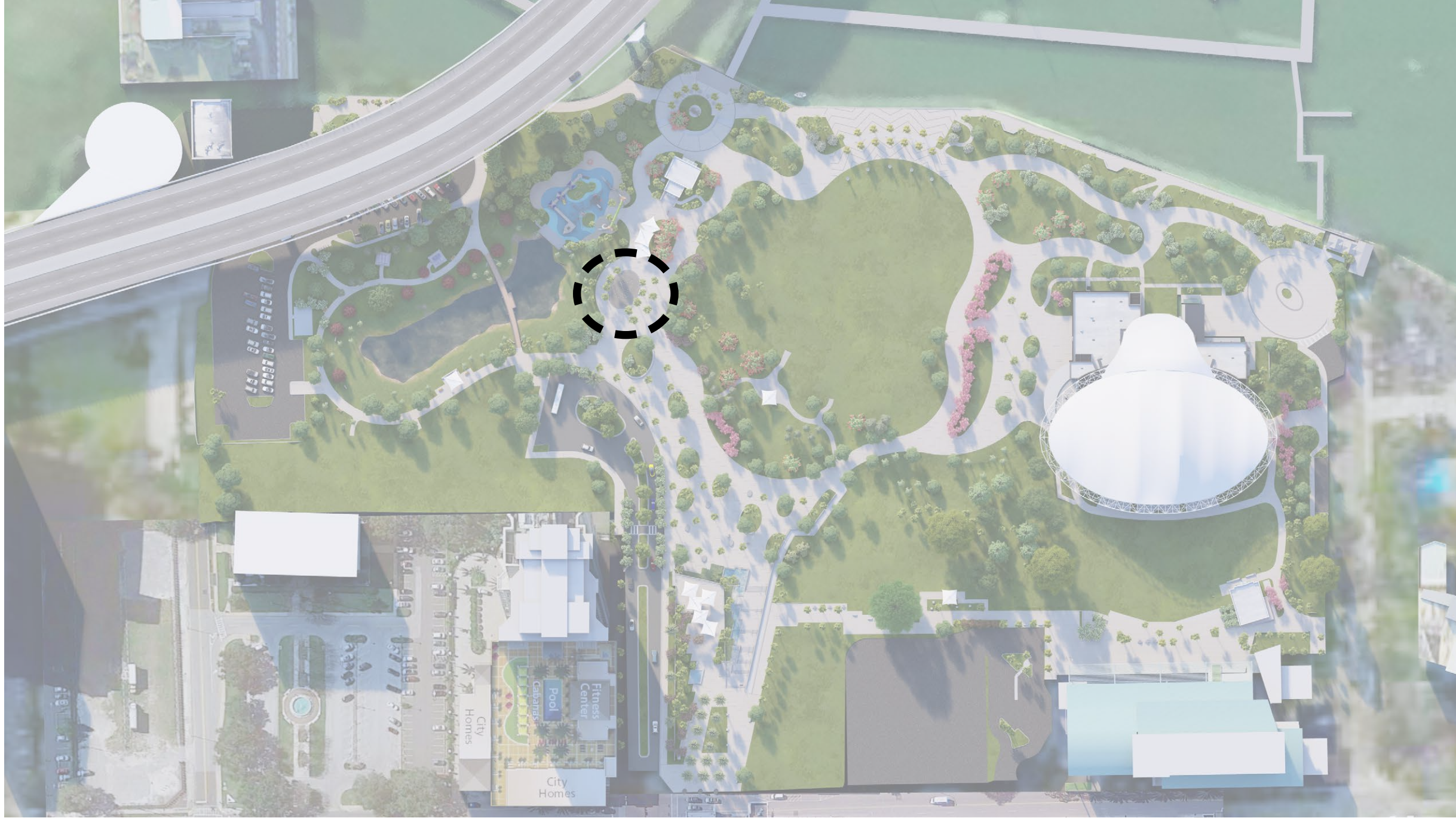


COACHMAN GARDENS BASE BID



COACHMAN GARDENS ADD ALTERNATE (ALTERNATE 4)

7 IMAGINE CLEARWATER DESIGN INTERACTIVE WATER FEATURE



- COST ANALYSIS**
- IWF BASE - **\$ 2,000,000 TOTAL** INCLUDING DIRECT & INDIRECT COST
 - NET ADDED ALTERNATE FOR BAMBOO FEATURES (QTY 4) – **\$ 107,000 TOTAL** INCLUDING DIRECT & INDIRECT COST



INTERACTIVE WATER FEATURE BASE BID



INTERACTIVE WATER FEATURE ADD ALTERNATE (ALTERNATE 5)

8

IMAGINE CLEARWATER DESIGN

INTERACTIVE WATER FEATURE SHADE STRUCTURES



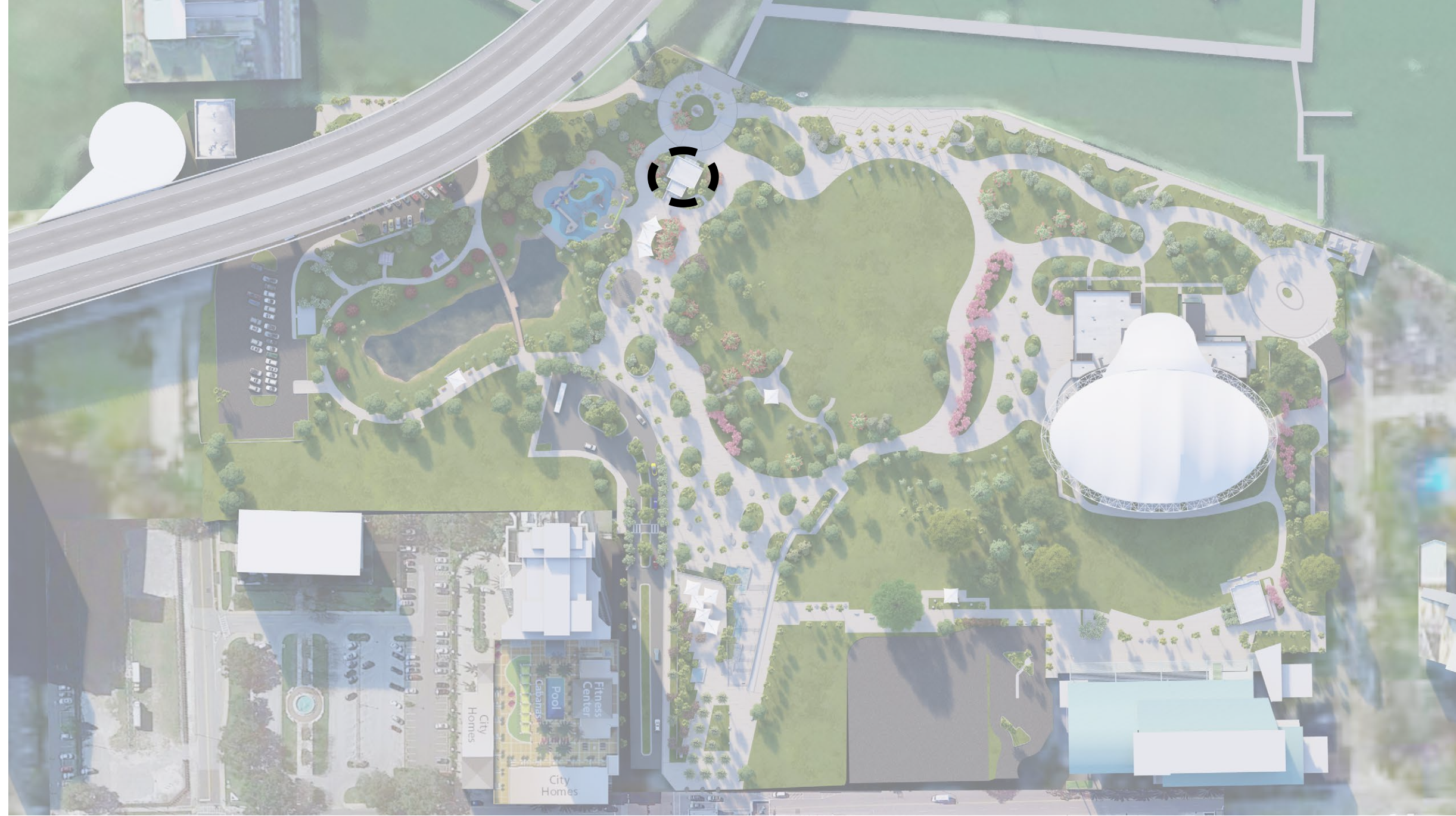
NOTE
• ALL SITE SHADE STRUCTURES SHOWN ARE IN THE BASE BID



9

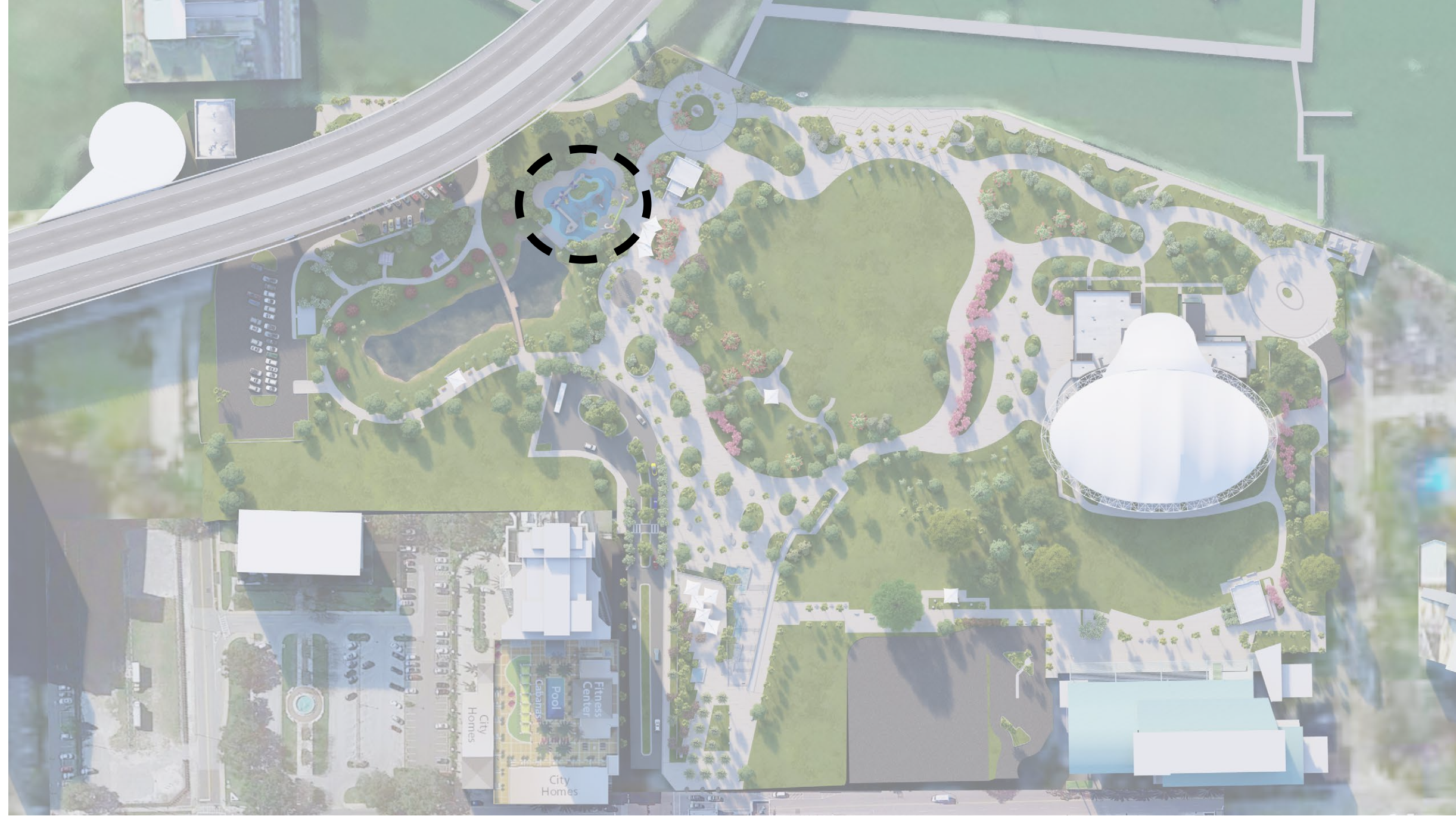
IMAGINE CLEARWATER DESIGN

INTERACTIVE WATER FEATURE RESTROOM



INTERACTIVE WATER FEATURE RESTROOM

10 IMAGINE CLEARWATER DESIGN PLAYGROUND



COST ANALYSIS

- BASE BID PLAYGROUND WITH ENGINEERED MULCH - **\$ 509,000 TOTAL** INCLUDING DIRECT AND INDIRECT COSTS
- BASE BID PLAYGROUND LAYOUT WITH RUBBERIZED SURFACE IN PLACE OF MULCH (DOES NOT INCLUDE PLAYGROUND EQUIPMENT) - **\$ 275,000 TOTAL** INCLUDING DIRECT AND INDIRECT COSTS
- NET ADDED ALTERNATE FOR PLAYGROUND EQUIPMENT / LAYOUT AND SURFACING **\$ 710,000 TOTAL** INCLUDING DIRECT & INDIRECT COSTS



PLAYGROUND BASE BID



PLAYGROUND ADD ALTERNATE (ALTERNATE 3 + 6)

11 IMAGINE CLEARWATER DESIGN PICNIC AREA



COST ANALYSIS

- ALTERNATE WITHOUT SOLAR \$ 215,000 DIRECT & INDIRECT
- ALTERNATE WITH SOLAR: PICNIC NORTH AND SOUTH: 6 PANELS EACH \$ 9,360 FOR SYSTEM CAPITAL COST ONLY

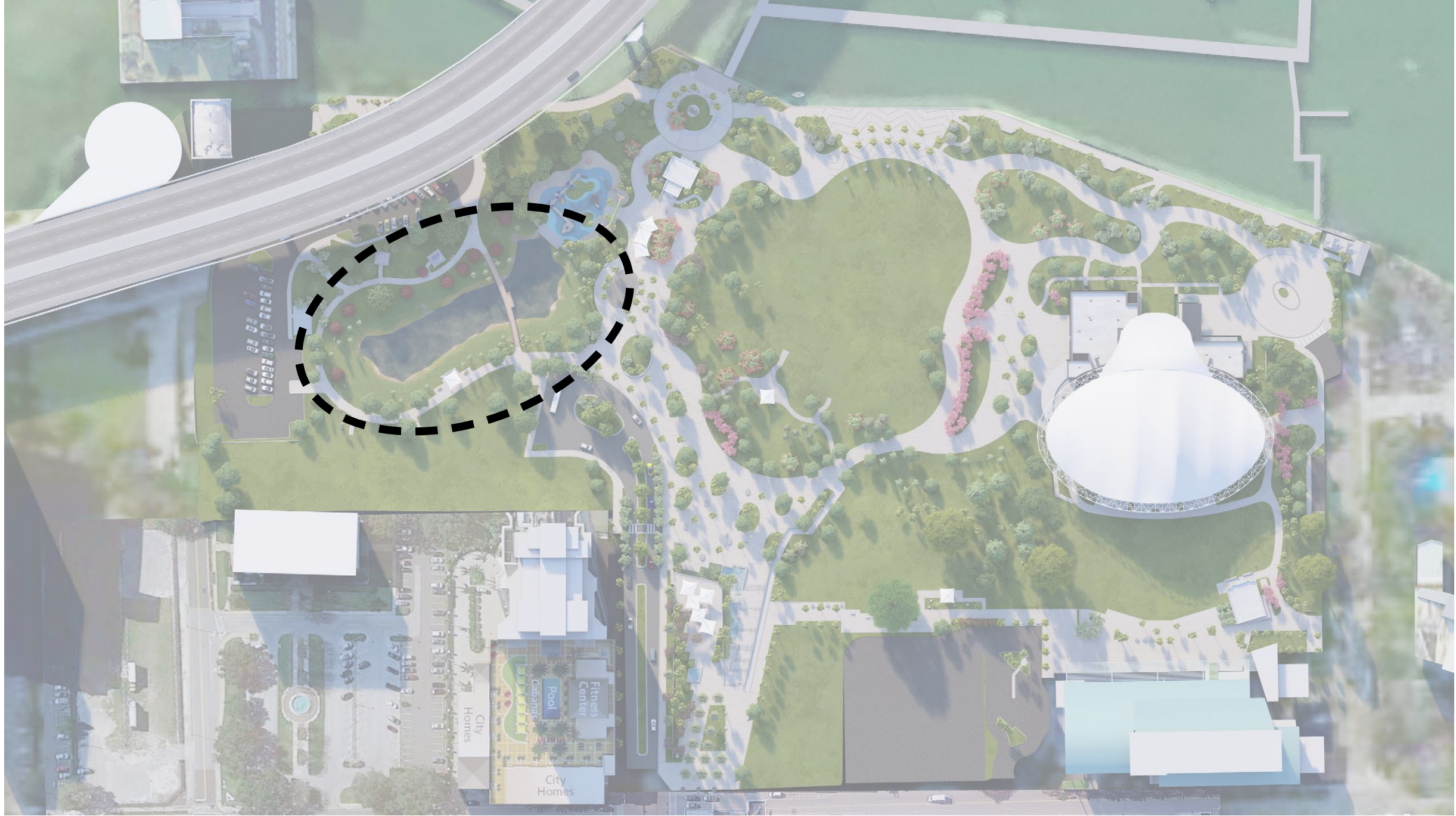


PICNIC AREA BASE BID



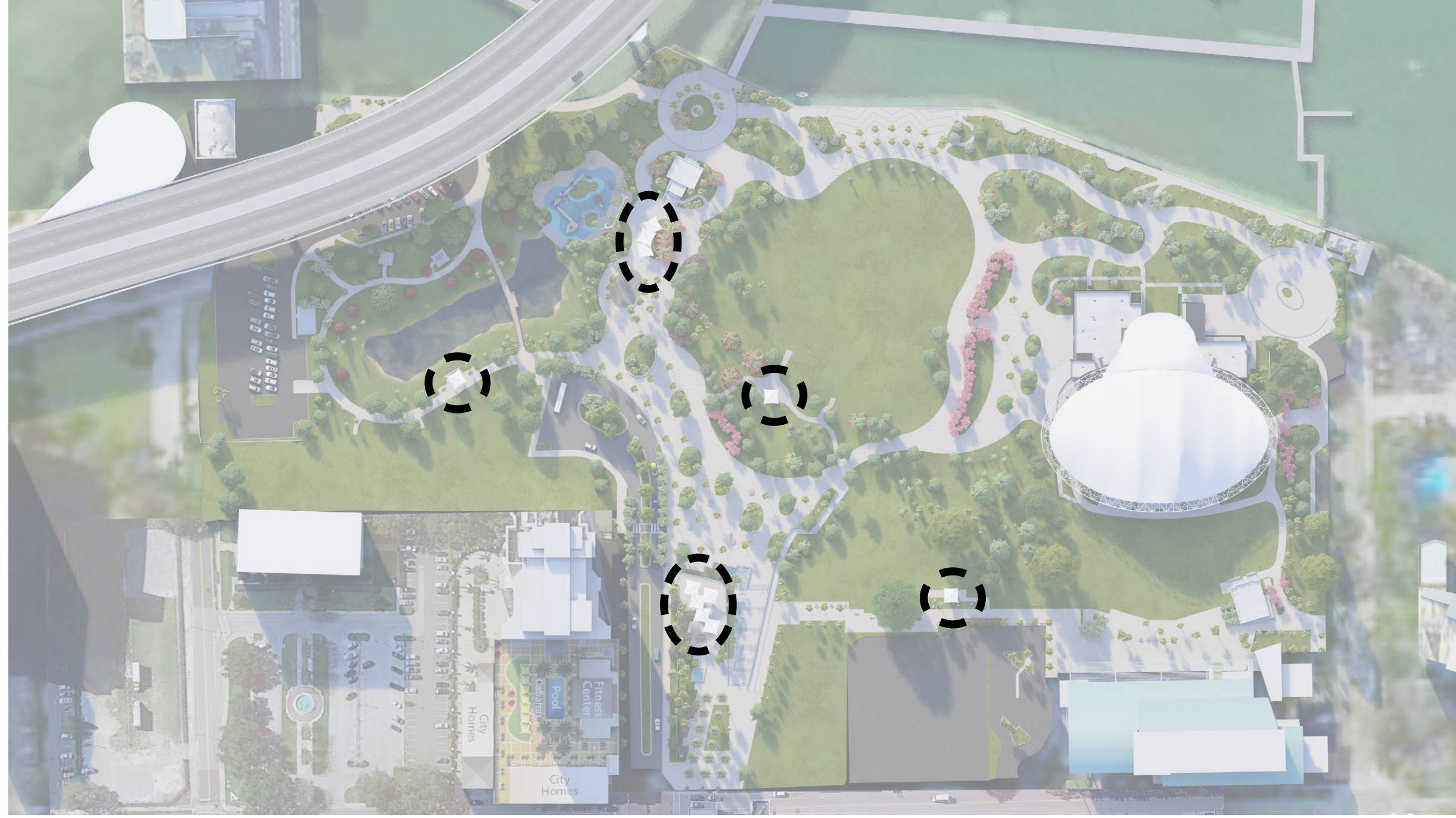
PICNIC AREA ADD ALTERNATE (ALTERNATE 7)

12 IMAGINE CLEARWATER DESIGN LAKE AREA



LAKE AREA

13 IMAGINE CLEARWATER DESIGN SHADE STRUCTURES



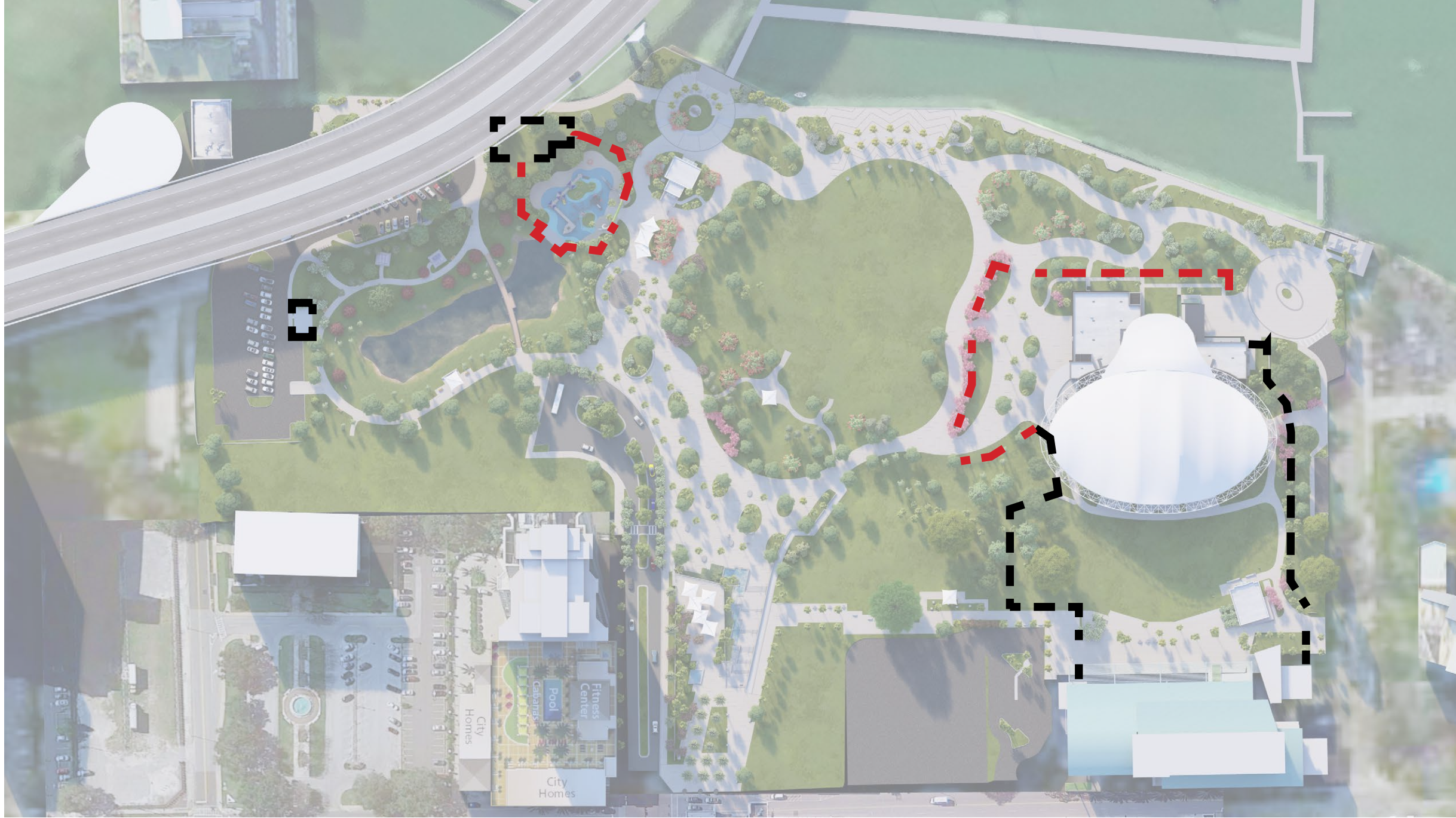
NOTE

- ALL SITE SHADE STRUCTURES SHOWN ARE IN THE BASE BID



TYPICAL SHADE STRUCTURE

14 IMAGINE CLEARWATER DESIGN PARK FENCING



COST ANALYSIS

- REVISED 4' METAL FENCE TO 6' (723 FEET OF RAIL) - TOTAL NET ADD OF APPROXIMATELY **\$42,295**



--- 4FT. HEIGHT PERMANENT FENCE



--- 6FT. HEIGHT PERMANENT FENCE



COST ANALYSIS

- 5 TORCHIERES - \$ 890,000 DIRECT & INDIRECT COSTS
- 3 TORCHIERES - \$ 534,000 DIRECT & INDIRECT COSTS

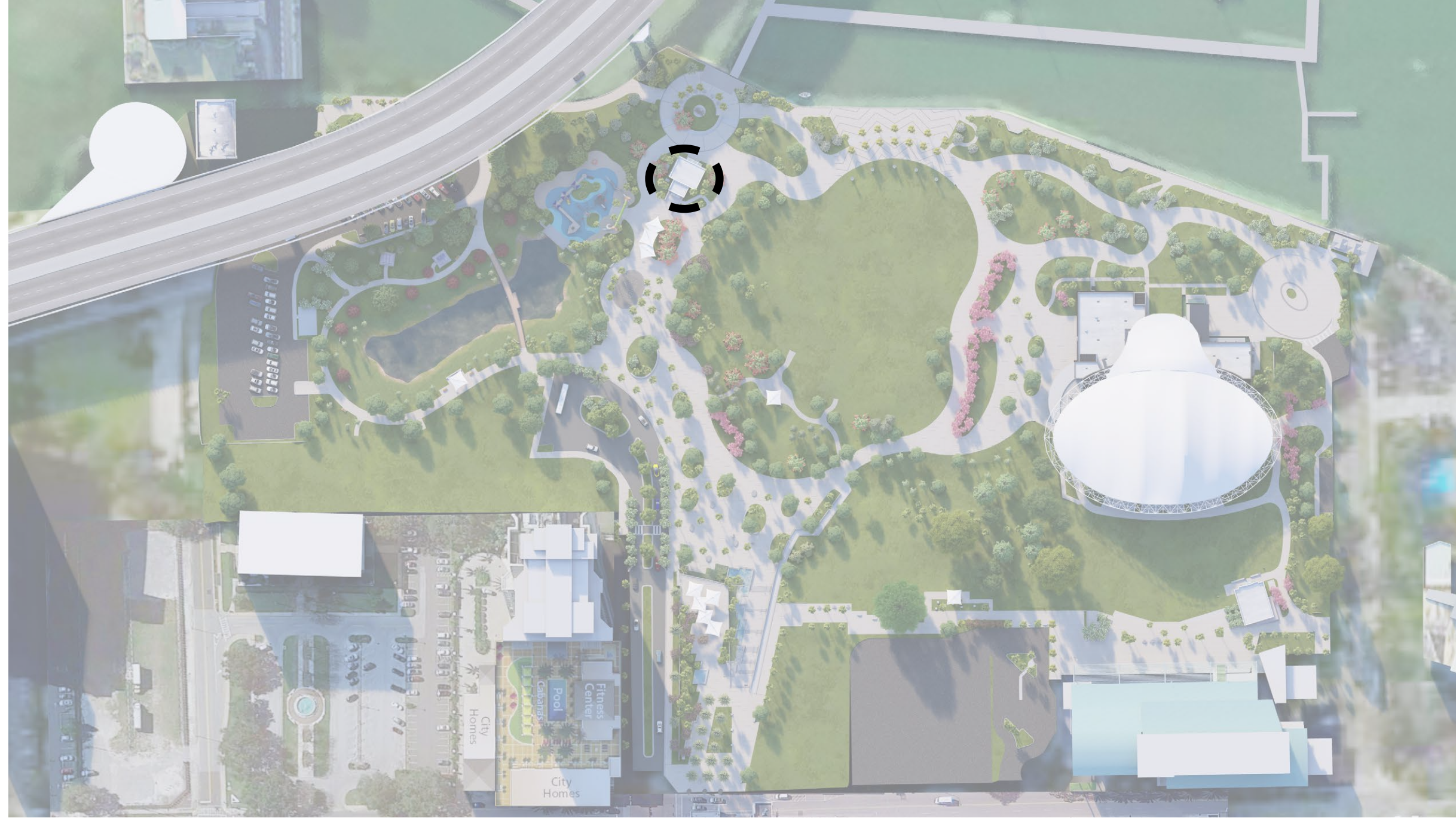


BASE BID TORCHIERE QUANTITY



ADD ALTERNATE TORCHIERE QUANTITY DEDUCTION

16 IMAGINE CLEARWATER DESIGN DOCKMASTER'S OFFICE



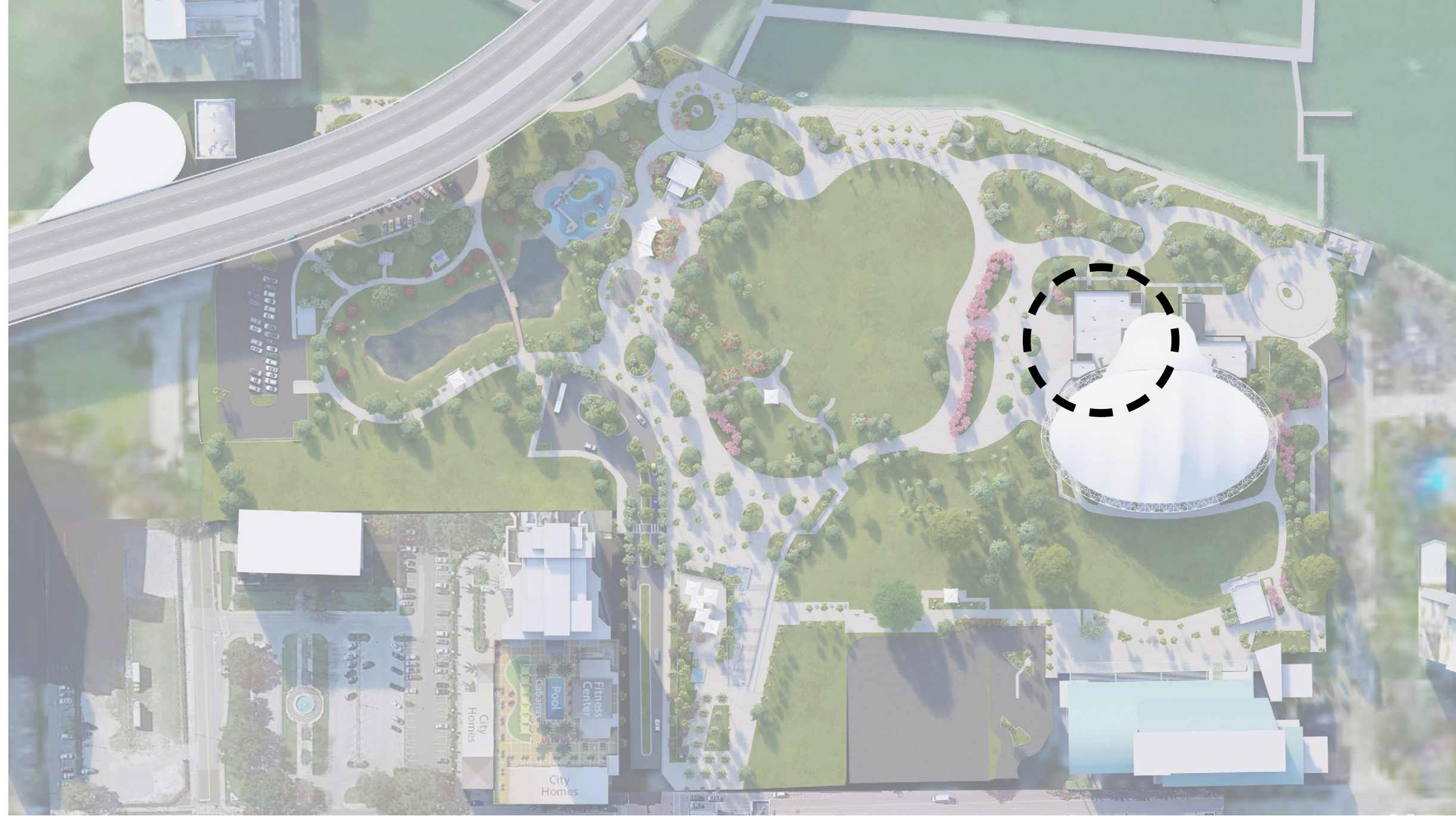
COST ANALYSIS

- 20 SOLAR PANELS ASSUMED (NO STRUCTURE CHANGE) - \$ 15,600
FOR SYSTEM CAPITAL COST ONLY



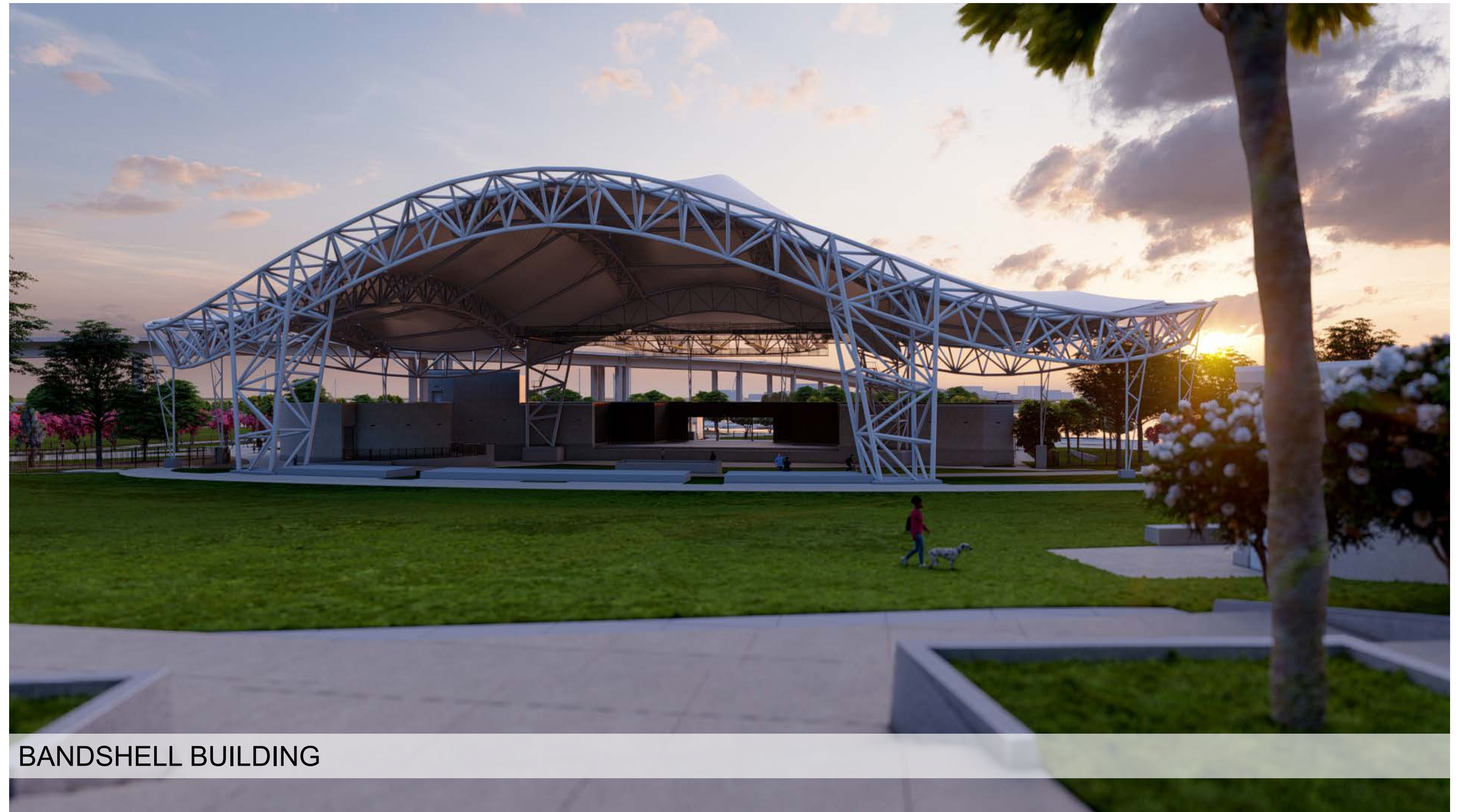
DOCKMASTER'S OFFICE

17 IMAGINE CLEARWATER DESIGN **BANDSHELL BUILDING**



COST ANALYSIS

- 211 SOLAR PANELS ASSUMED (NO STRUCTURE CHANGE) - \$ 164,600
FOR SYSTEM CAPITAL COST ONLY

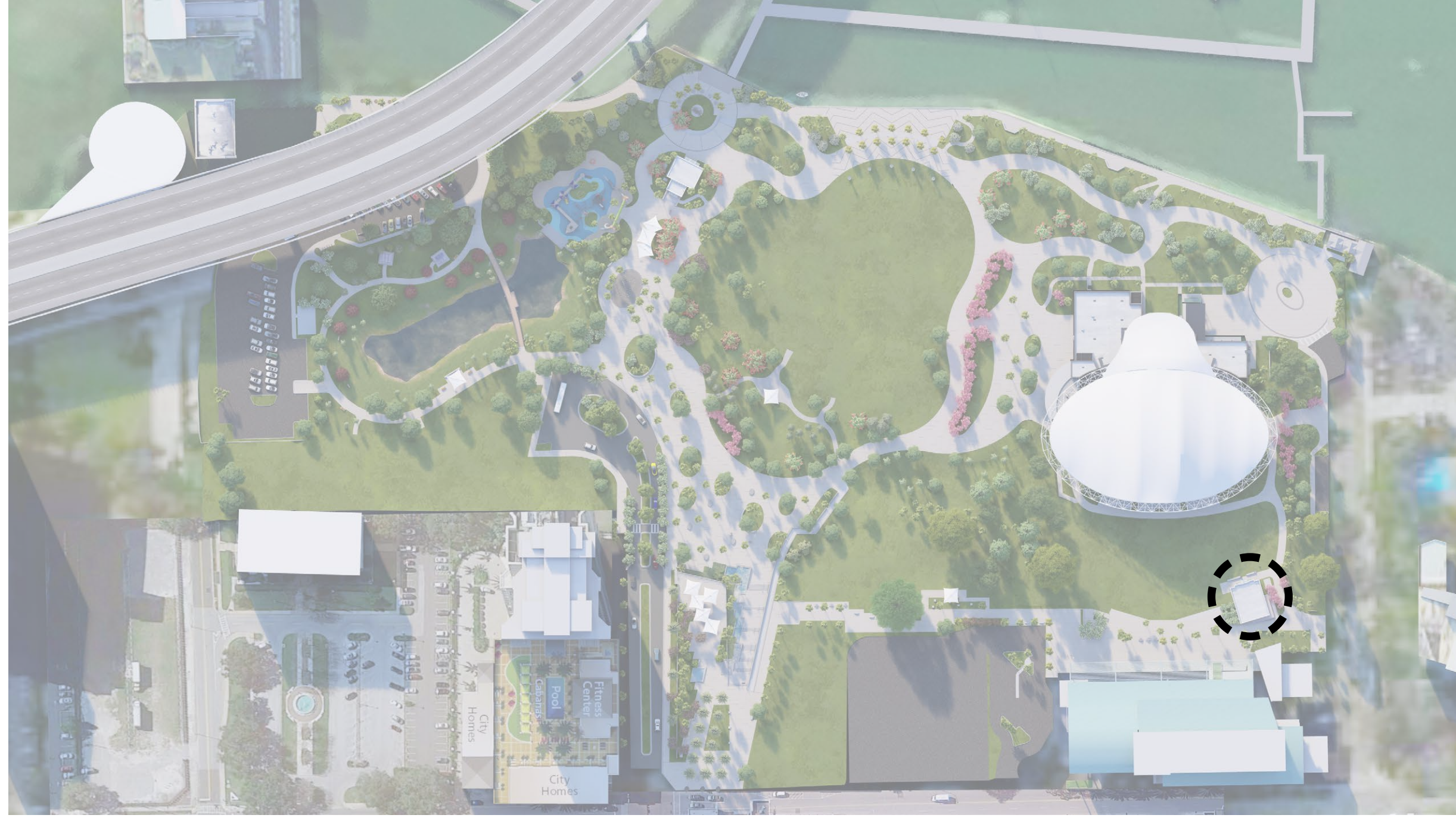


BANDSHELL BUILDING



BANDSHELL BUILDING

18 IMAGINE CLEARWATER DESIGN EVENT RESTROOM BUILDING



COST ANALYSIS

- 34 SOLAR PANELS ASSUMED (NO STRUCTURE CHANGE) - \$ 26,600
FOR YSTEM CAPITAL COST ONLY

