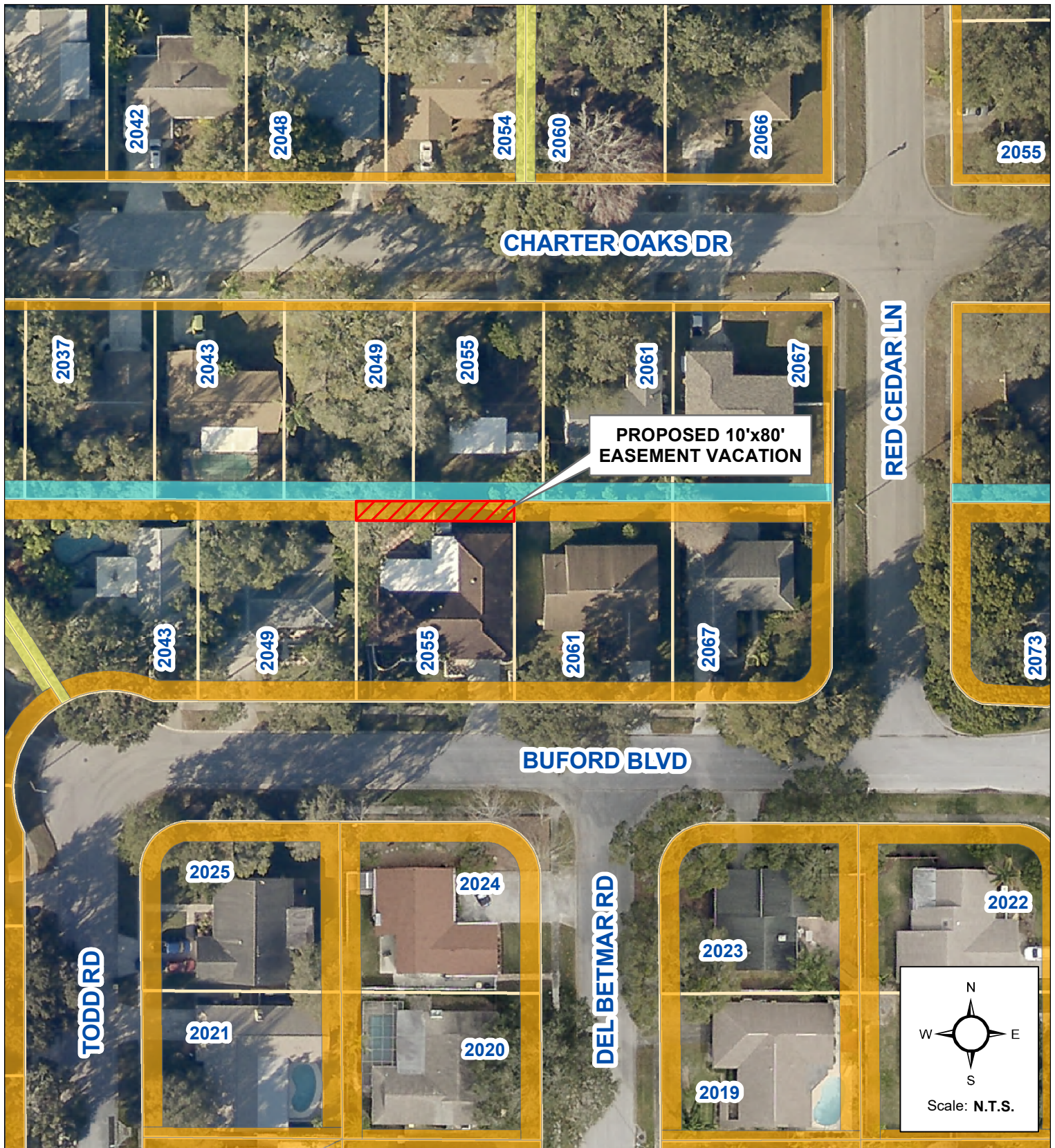


AERIAL MAP



Prepared by:
Engineering Department
Geographic Technology Division
100 S. Myrtle Ave, Clearwater, FL 33756
Ph: (727)562-4750, Fax: (727)526-4755
www.MyClearwater.com

Proposed Utility Easement Vacation 2055 Buford Blvd

Grid #: 253B	S-T-R: 1-29s-15e	Aerial Flown 2019	Map Gen By: KN	Reviewed By: RB	Date: 2/9/2021	Page 1 of 1
--------------	------------------	-------------------	----------------	-----------------	----------------	-------------

Document Path: C:\Users\Kieffer.Nyland\City of Clearwater\Engineering Geographic Technology - Location Maps\Buford_Bldv-Vacation.mxd