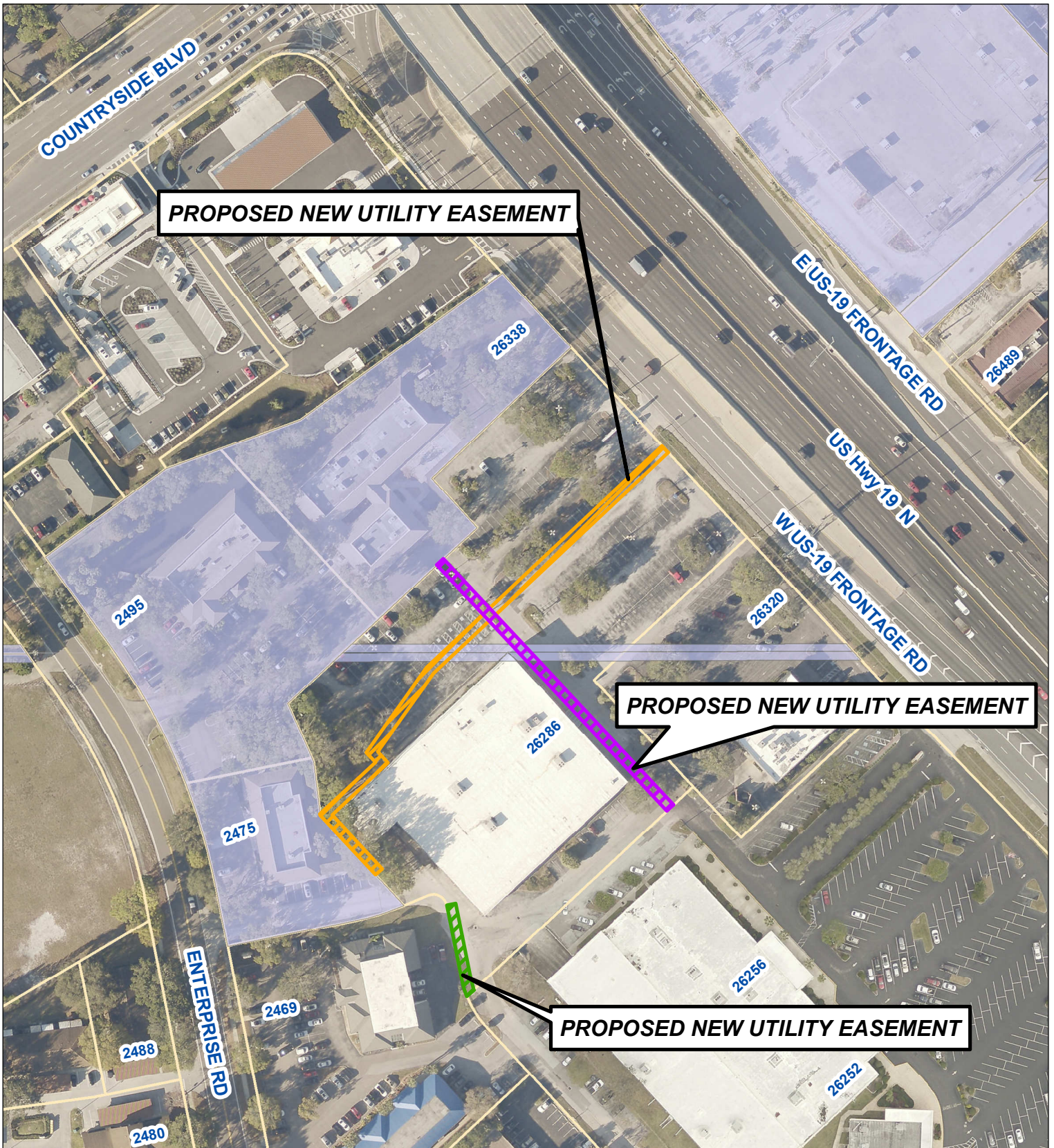



# AERIAL MAP



 <p><b>CLEARWATER</b> BRIGHT AND BEAUTIFUL - WAY TO REACH</p> <p>Prepared by: Engineering Department Geographic Technology Division 100 S. Myrtle Ave, Clearwater, FL 33756 Ph: (727)562-4750, Fax: (727)526-4755 www.MyClearwater.com</p>	<h2 style="text-align: center;">Proposed New 10' Utility Easements 26286 US HWY 19 N</h2>					 <p>Scale: <b>N.T.S.</b></p>
<p>Grid #: XXXX</p>	<p>S-T-R: XX-XXs-XXe</p>	<p>Map Gen By: WD</p>	<p>Reviewed By: RB</p>	<p>Date: 10/26/2020</p>	<p>Page: 1 of 1</p>	