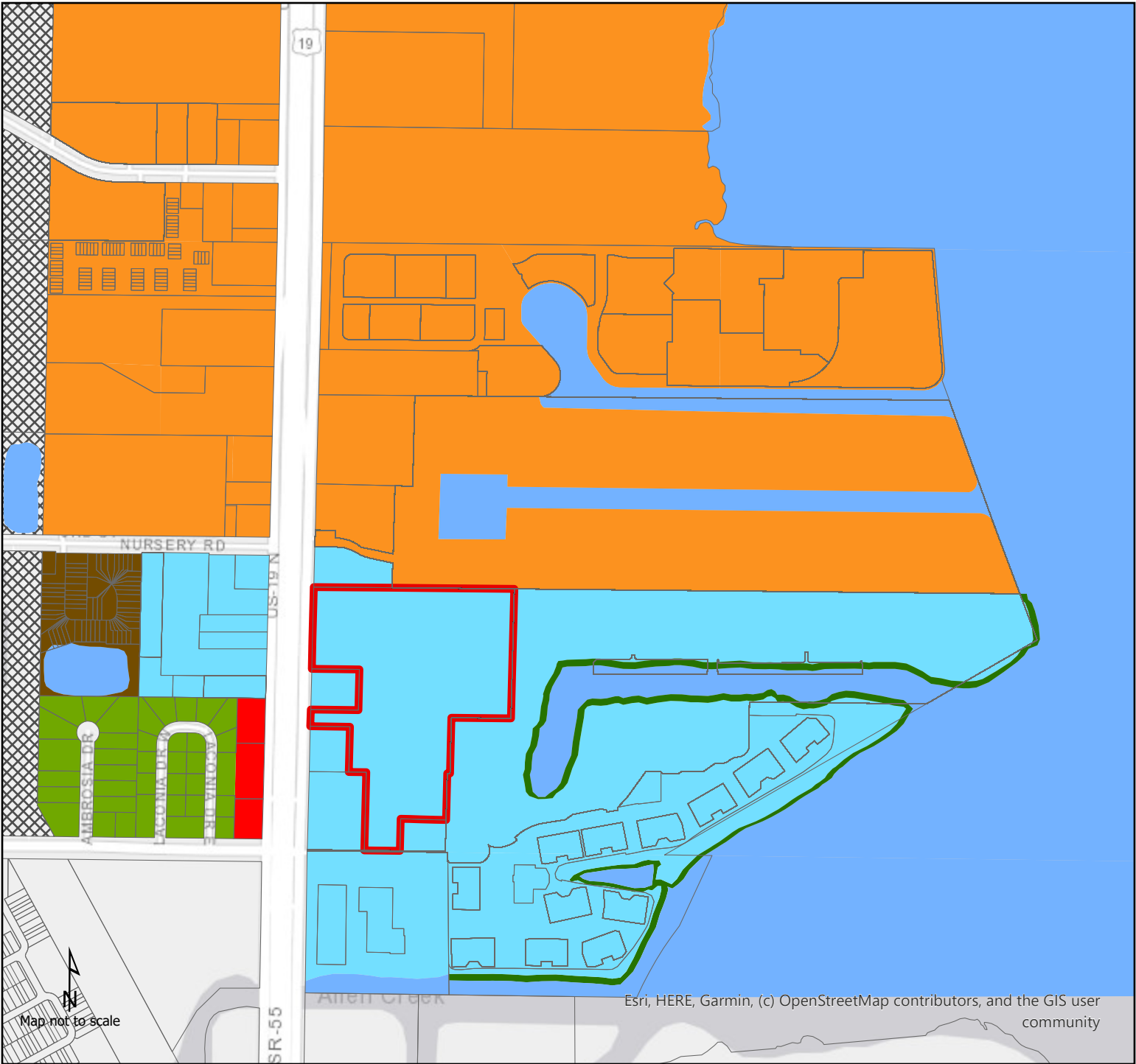







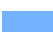


Exhibit 5 - Future Land Use



Subject Area Future Land Use

-  (CG) Commercial General
-  (P) Preservation
-  (RL) Residential Low
-  (RM) Residential Medium
-  (T/U) Transportation/Utility
-  (US 19-C) US 19 Corridor
-  (US 19-NC) US 19 Neighborhood Center
-  (WATER) Water

1 inch equals 625 feet

