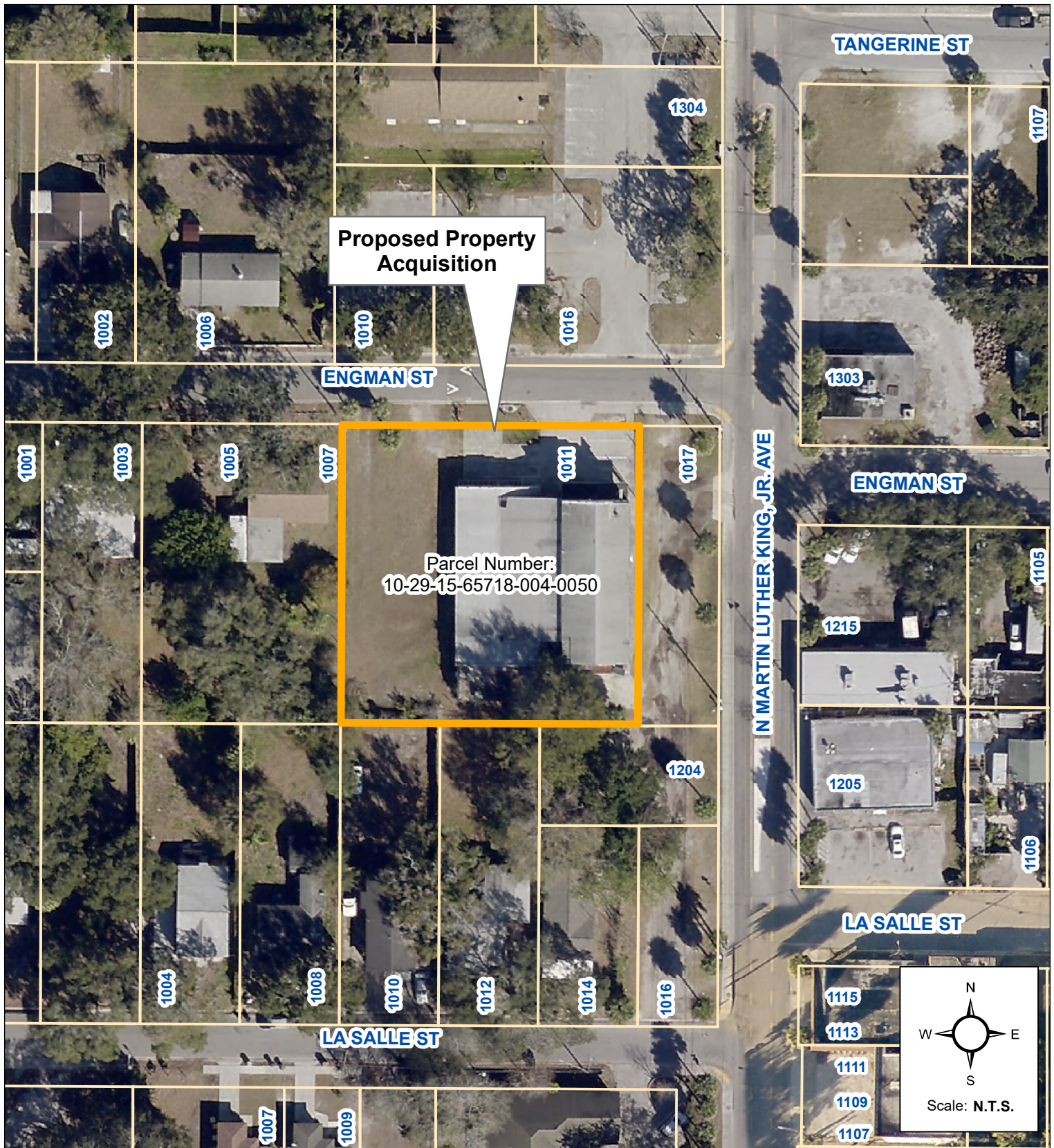


AERIAL MAP



Proposed Property Acquisition 1011 Engman St.

Parcel Number: 10-29-15-65718-004-0050



Prepared by:
Engineering Department
Geographic Technology Division
100 S. Myrtle Ave, Clearwater, FL 33756
Ph: (727)562-4750, Fax: (727)526-4755
www.MyClearwater.com

Grid #: 269A

S-T-R: 10-29s-15e

Aerial Flown 2019

Map Gen By: KN

Reviewed By: PD

Date: 12/29/2020

Page 1 of 1

Document Path: C:\Users\Kieffer.Nyland\City of Clearwater\Engineering Geographic Technology - Location Maps\1011_Engman_Acquisition.mxd