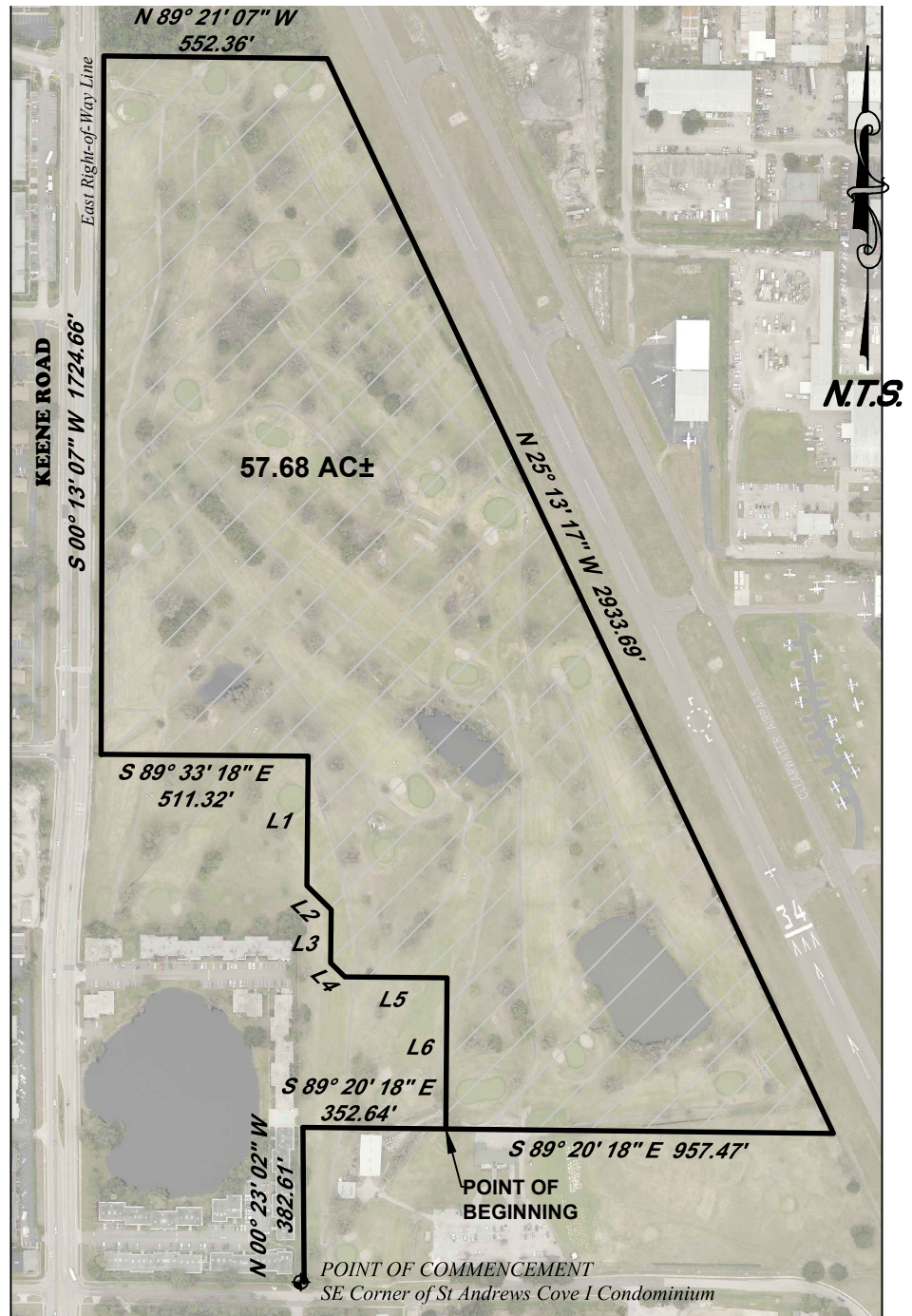


*This is not a survey*

LINE	LENGTH	BEARING
L1	319.70'	S00°26'42"W
L2	84.10'	S45°00'00"E
L3	131.21'	S00°26'42"W
L4	49.29'	S45°00'00"E
L5	252.38'	S89°33'18"E
L6	373.42'	S00°26'42"W



### Legal Description

Commence at the Southeast corner of St. Andrews Cove I Condominium, as recorded in Plat Book 23, Page 83, of the Public Records of Pinellas County, FL; thence N 00° 23' 02" W, along the East line of said condominium plat, a distance of 382.61 feet; thence S 89° 20' 18" E, a distance of 352.64 feet to a Point of Beginning; thence S 89° 20' 18" E, a distance of 957.47 feet; thence N 25° 13' 17" W, a distance of 2933.69 feet; thence N 89° 21' 07" W, a distance of 552.36 feet to the East Right-of-Way line of Keene Road; thence S 00° 13' 07" W, along the East Right-of-Way line of Keene Road, a distance of 1724.66 feet; thence S 89° 33' 18" E, a distance of 511.32 feet; thence S 00° 26' 42" W, a distance of 319.70 feet; thence S 45° 00' 00" E, a distance of 84.10 feet; thence S 00° 26' 42" W, a distance of 131.21 feet; thence S 45° 00' 00" E, a distance of 49.29 feet; thence S 89° 33' 18" E, a distance of 252.38 feet; thence S 00° 26' 42" W, a distance of 373.42 feet to the Point of Beginning.

Containing 57.68 AC MOL

**CITY OF CLEARWATER**  
ENGINEERING DEPARTMENT

DRAWN BY  
Jim Benwell

CHECKED BY  
Tom Mahony

*Exhibit A*  
Proposed Industrial, Research,  
Technology Park

DWG. NO.

2020019

SHEET

1 OF 1

SEC-TWNSP-RNG 12 - 29 S - 15 E

DATE DRAWN

07/08/2020