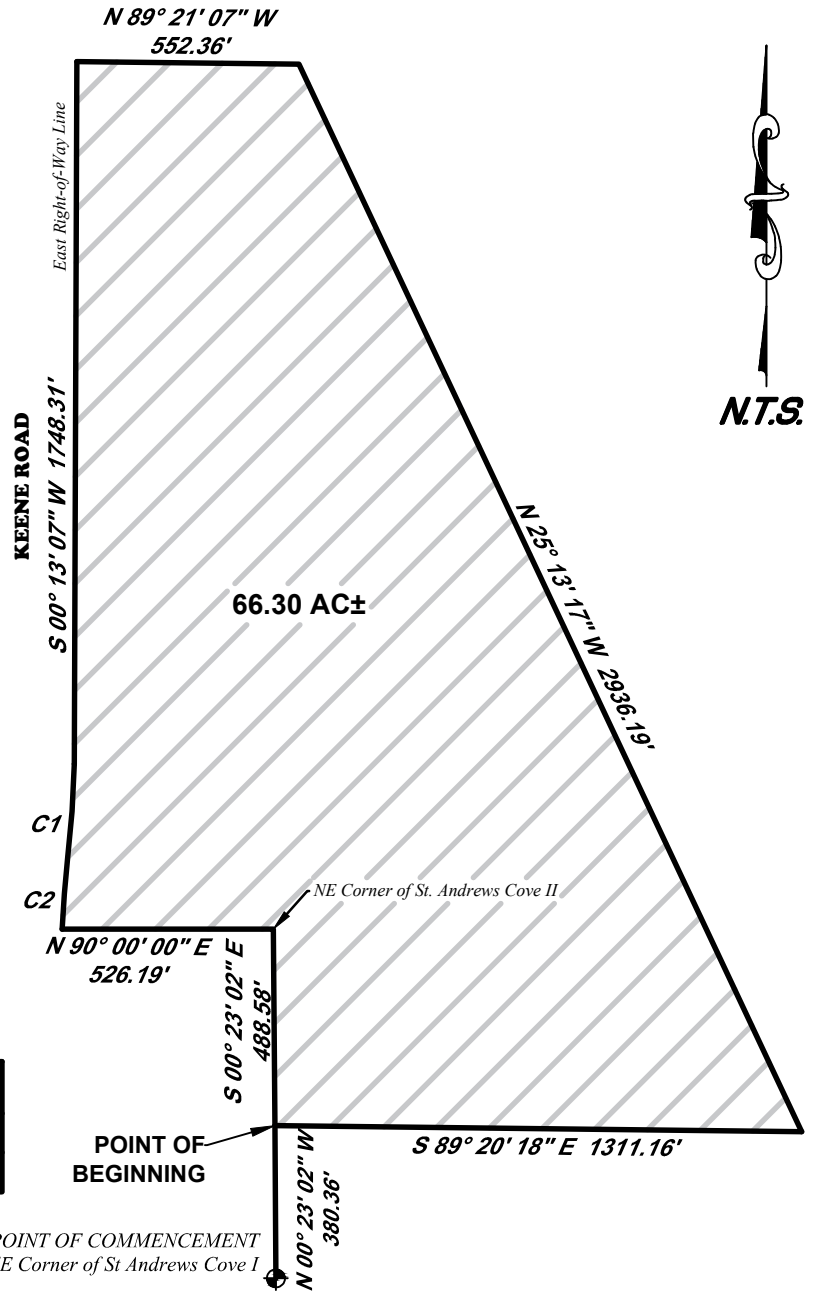


This is not a survey



Legal Description

Commence at the Southeast corner of St. Andrews Cove I Condominium, as recorded in Plat Book 23, Page 83, of the Public Records of Pinellas County, FL; thence N 00° 23' 02" W, along the East line of said condominium plat, a distance of 380.36 feet to a Point of Beginning; thence S 89° 20' 18" E, a distance of 1311.16 feet; thence N 25° 13' 17" W, a distance of 2936.19 feet; thence N 89° 21' 07" W, a distance of 552.36 feet to the East Right-of-Way line of Keene Rd; thence S 00° 13' 07" W, along the East Right-of-Way line of Keene Rd, a distance of 1748.31 feet; thence continuing along said East Right-of-Way line and along a curve concave to the West, having a radius of 2850.00 feet, a chord length of 234.85 feet and a chord bearing of S 04° 00' 32" W along the arc, a distance of 234.92 feet, to the point of reverse curvature; thence along said curve concave to the East, having a radius of 2750.00 feet, a chord length of 176.88 feet and a chord bearing of S 04° 31' 37" W along the arc, a distance of 176.91 feet, to a point on the North boundary of St. Andrews Cove II Condominium, as recorded in Plat Book 24, Page 113, of the Public Records of Pinellas County, FL; thence N 90° 00' 00" E, a distance of 526.19 feet to the Northeast corner of said St. Andrews Cove II; thence S 00° 23' 02" E, a distance of 488.58 feet to the Point of Beginning.

Containing 66.30 AC MOL

CITY OF CLEARWATER
ENGINEERING DEPARTMENT

DRAWN BY
Jim Benwell

CHECKED BY
Tom Mahony

Landings Golf Course
Portion To Be Declared Surplus

DWG. NO.

Lgl_2020-08

SHEET

1 OF 1

SEC-TWNSP-RNG 12 - 29 S - 15 E

DATE DRAWN

06/01/2020