

Micromobility Pilot Program Staff Recommendations

Pilot Program Schedule

- City will issue a Request for Proposals (RFP). The city will then select the vendor(s) to complete a one-year pilot program

Where People Can and Cannot Ride

- Allowed on streets with a speed limit of 30 mph or less.
- Prohibited on streets with speed limits exceeding 30 mph.
- Prohibited on all sidewalks.
- **Where Can I Ride?** (alphabetically):
 - Booth Avenue
 - Brownell Street
 - Brown's Court
 - Cleveland Street
 - Drew Street – Yes from Clearwater Harbor to Myrtle Avenue
 - East Avenue
 - Ewing Avenue
 - Fort Harrison Avenue
 - Franklin Street
 - Garden Avenue
 - Gould Street
 - Grove Street
 - Hendricks Street
 - Knights Alley
 - Laura Street
 - Madison Avenue
 - MLK, Jr. Avenue
 - Northeast Cleveland Street
 - Oak Avenue
 - Osceola Avenue
 - Park Street
 - Pierce Street
 - Prospect Avenue
 - Washington Avenue
 - Watterson Avenue
- **Where Am I Not Allowed to Ride?** (alphabetically):
 - Chestnut Street
 - Court Street
 - Drew Street - No from Myrtle Avenue to Missouri Avenue
 - Memorial Causeway & Bridge
 - Missouri Avenue
 - Myrtle Avenue

Program Boundaries (see attached map)

- West – Clearwater Harbor
- North – Drew Street
- East – Missouri Avenue
- South – Chestnut Street

Program Expansion Area Boundaries (see attached map) - Expansion of the program requires authorization by the City Manager.

North Expansion Area

- West – Clearwater Harbor
- North – Fairmont Street
- East – North Myrtle Avenue
- South – Drew Street

South Expansion Area

- West – Waterfront
- North – Chestnut Street
- East – South Myrtle Avenue
- South - Corbett Road
- Excludes the Harbor Oaks neighborhood

Parking – Designated parking areas may be located with city approval on sidewalks allowing for a minimum travel path of four (4) feet. Designated parking areas on a street shall not be located in a traffic control or traffic safety area, and under no conditions will parking locations be allowed in a travel lane. On-street parking locations may include use of unused space or an on-street parking space with city approval.

- Users will be required to return devices to a designated parking area.
- Operators will be required to identify proposed parking locations and submit a Right-of-Way Permit application and fee to the city for written approval of the location and dimensions of the parking area. Operators will be required to place their micromobility devices in approved designated spaces for use, and in no other locations.

Device Speed – Maximum travel speed is 15 mph

Hours of Operation - 6:00 a.m. - 12:00 a.m. (midnight)

Minimum Age - 16 years old

Number of Devices - 200 devices is the maximum total number allowed to be offered in the program; however, the City Manager may adjust the number of devices permitted, including reducing the total number allowed per operator, at his discretion. If the program expansion areas are utilized, and additional number of devices will be allowed to serve the expansion areas as determined by the city in consultation with the selected Operators. These numbers are based on what is occurring in other communities' programs in consideration of the relative size

of the program area, estimated number of parking corral locations, number of key locations generating and attracting riders, and the number of vehicles that provide for the convenience and efficiency fundamental to the program's success without producing a congestion of devices in the city rights-of-way. Timely redistribution of devices (rebalancing) is an important goal for the Operators and the city, and a timeframe for these activities to occur will be part of the pilot program.

CITY OF CLEARWATER RISK AND SAFETY

Insurance - As with other businesses in the city, Pilot Program Operators will be required to provide the following:

- Commercial General Liability Insurance - \$1,000,000 per occurrence and \$2,000,000 in aggregate
- Automobile Liability Insurance - \$500,000 limit per occurrence or \$1,000,000 combined limit per occurrence exceeding \$100,000
- Workers Compensation and Employer's Liability Insurance - \$1,000,000 per occurrence
- Excess Liability Insurance - \$2,000,000 or more
- Cyber Liability Insurance - \$2,000,000 per occurrence and \$10,000,000 aggregate

Enforcement - Violations of the program requirements as specified in the contract with Operators may result in fines, penalties, or cancellation of the agreement forfeiting right of Operator to participate.

- Violations of traffic regulations (e.g. wrong way riding on roads) by Users may result in tickets issued by the Police Department.
- Violations of the program requirements (e.g. parking in front of a building entry or a sidewalk curb ramp) by Users may result in fines or additional charges levied by the Operator, or fines and penalties assessed by the city on the Operator.

Safety & Education

- Many cities work with Operators to incorporate safety education on how to ride and rules of the road, and to provide access to safety equipment into their micromobility programs.
- Classes will be offered by Operators demonstrating how to ride scooters.
- Free or discounted helmets will be offered by Operators at demonstration classes along with helmet fitting lessons. Helmets will also be offered by Operators on their websites. Discount coupons, codes, and other enticements to purchase helmets will be provided at classes, events, and online.
- Devices must meet mandatory state safety equipment (e.g. front white headlights and rear red brake lights).
- Program requires ongoing maintenance and safety inspections of equipment.

OPERATOR REQUIREMENTS

All Operators who provide micromobility devices in the city must first obtain a Shared Mobility Device License from the City of Clearwater through the Pilot Program.

Pilot Program Fees

- Program application fee - \$250 per application
- Right of Way Permit Fee - \$50 per permit for each parking location
- Pilot Program permit fee - \$5,000 per permit, or Operator
- Device fee - \$1.00 per device, per day

Number of Operators – 1 or 2 operators

Business Office for Program – A representative who is an employee of the company must have a licensed business location within the city limits and be open for business during typical weekday workday hours that will be determined with the selected Operators. The business representative is required to be able receive messages when not open and respond within 24 hours.

Impoundment – Section 28.08(4) provides for the impoundment of improperly placed devices in streets, sidewalks and other public spaces.

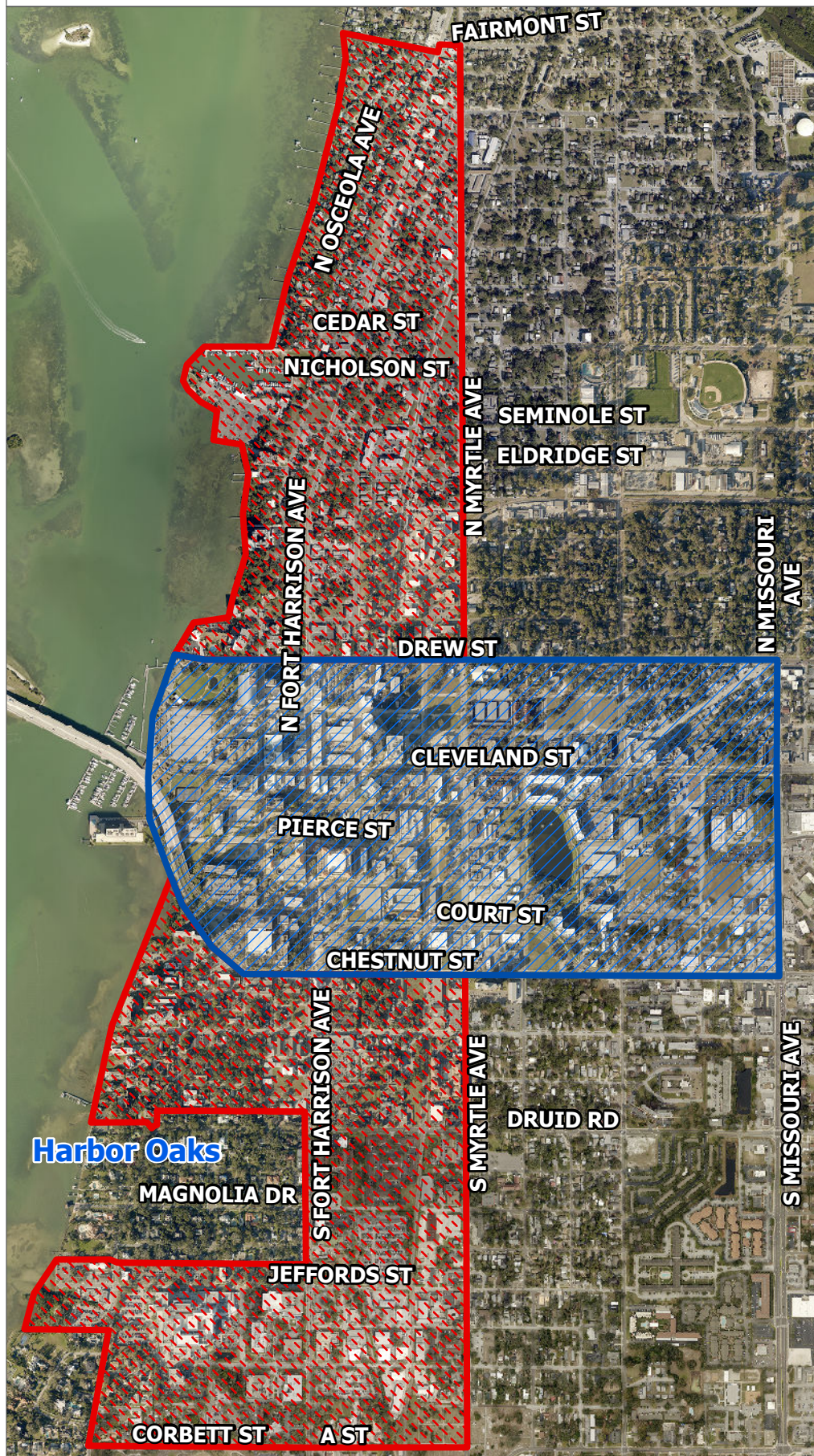
“MOTORIZED SCOOTERS” - PRIVATELY OWNED AND FOR RENT DEVICES

“Motorized Scooters” that meet the state and city definition may be privately-owned. The state grants riders of motorized scooters the same rights and responsibilities throughout the city as granted riders of bicycles. Privately owned motorized scooters will be regulated according to state statutes.

Businesses may offer motorized scooters for rent in-person, and not through a micromobility system (i.e. reservation system). These devices would be considered a “shared mobility device” under this ordinance, which provides that, “No shared mobility device provider shall display, offer, or make available for rent any micromobility device or motorized scooter within the City, unless the provider holds a shared mobility device license from the City through participation in a pilot program, a valid, fully executed operating agreement with the City, or approval from the City through an established process. No license shall be granted to allow shared mobility device provider operations on Clearwater Beach, Sand Key, Island Estates or any other area restricted pursuant to Section 25.18 of this Code.”

MICROMOBILITY PILOT PROGRAM

Pilot Program Boundaries



Proposed Boundaries



Potential Expansion Areas



Proposed Program Boundaries*:

West: Clearwater Harbor
South: Chestnut Street
East: Missouri Avenue
North: Drew Street

Riding prohibited on:

Memorial Causeway Bridge
Drew Street between North Osceola Avenue and Missouri Avenue
Missouri Avenue
Chestnut Street
Court Street

North Expansion Area Boundaries*:

West: Clearwater Harbor
South: Drew Street
East: North Myrtle Avenue
North: Fairmont Street

Riding would be prohibited on:

North Myrtle Avenue

South Expansion Area Boundaries*:

West: Clearwater Harbor
South: Corbett Street / A Street
East: South Myrtle Avenue
North: Chestnut Street

Riding would be prohibited on:

South Myrtle Avenue
Chestnut Street

* Boundaries not being adopted by Ordinance No. 9348-19.



Not to Scale