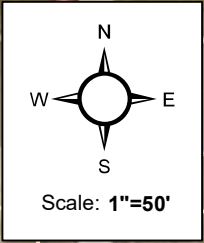
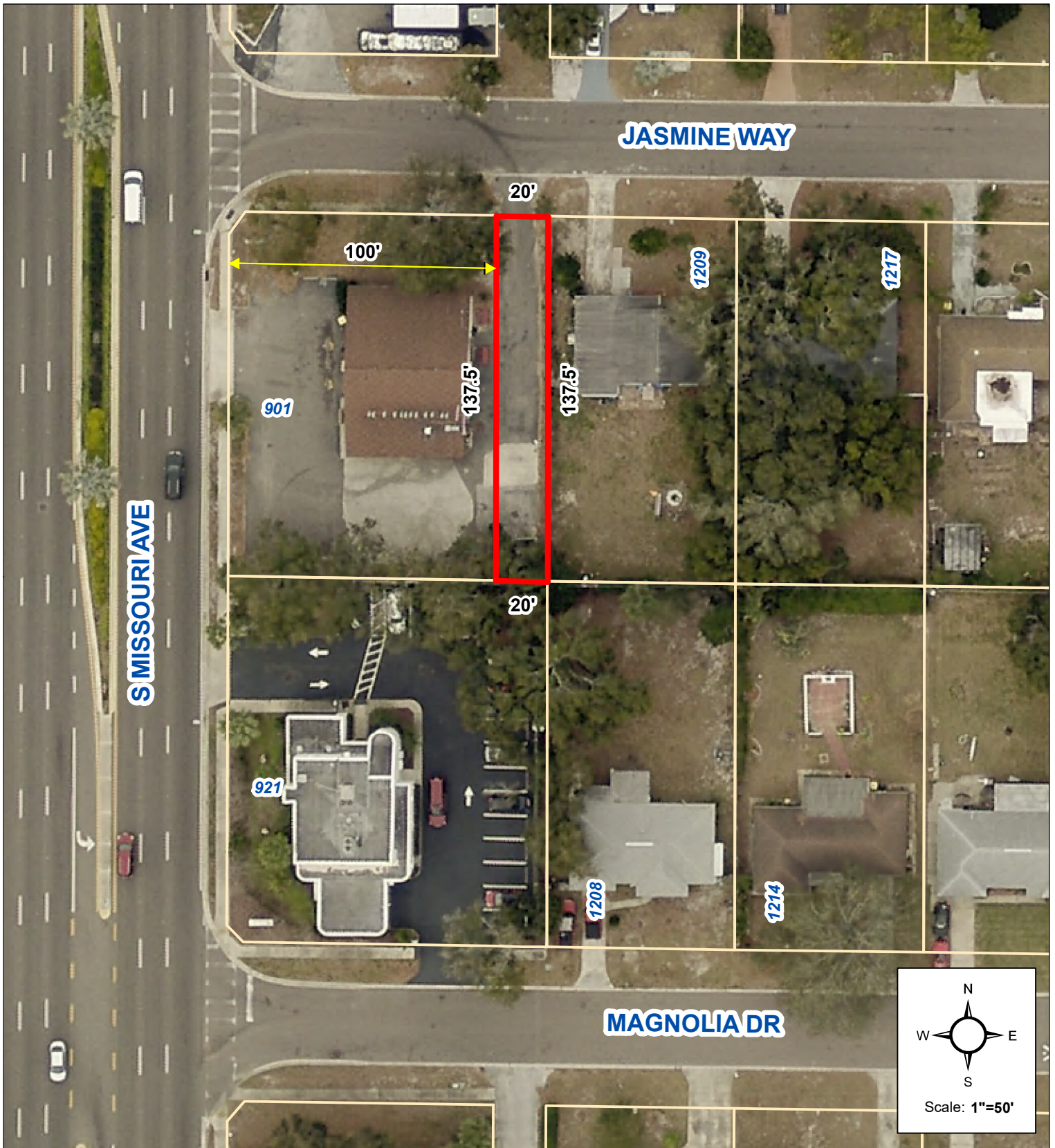


# AERIAL MAP



## Proposed Alley Vacation off Jasmine Way

  Site Location

  
**CLEARWATER**  
BRIGHT AND BEAUTIFUL - WAY TO BEACH  
Prepared by:  
Engineering Department  
Geographic Technology Division  
100 S. Myrtle Ave, Clearwater, FL 33756  
Ph: (727)562-4750, Fax: (727)526-4755  
www.MyClearwater.com

Grid #: 296A	S-T-R: 15-29s-15e	Aerial Flown 2019	Map Gen By: KN	Reviewed By: JB	Date: 11/8/2019	Page 1 of 1
--------------	-------------------	-------------------	----------------	-----------------	-----------------	-------------