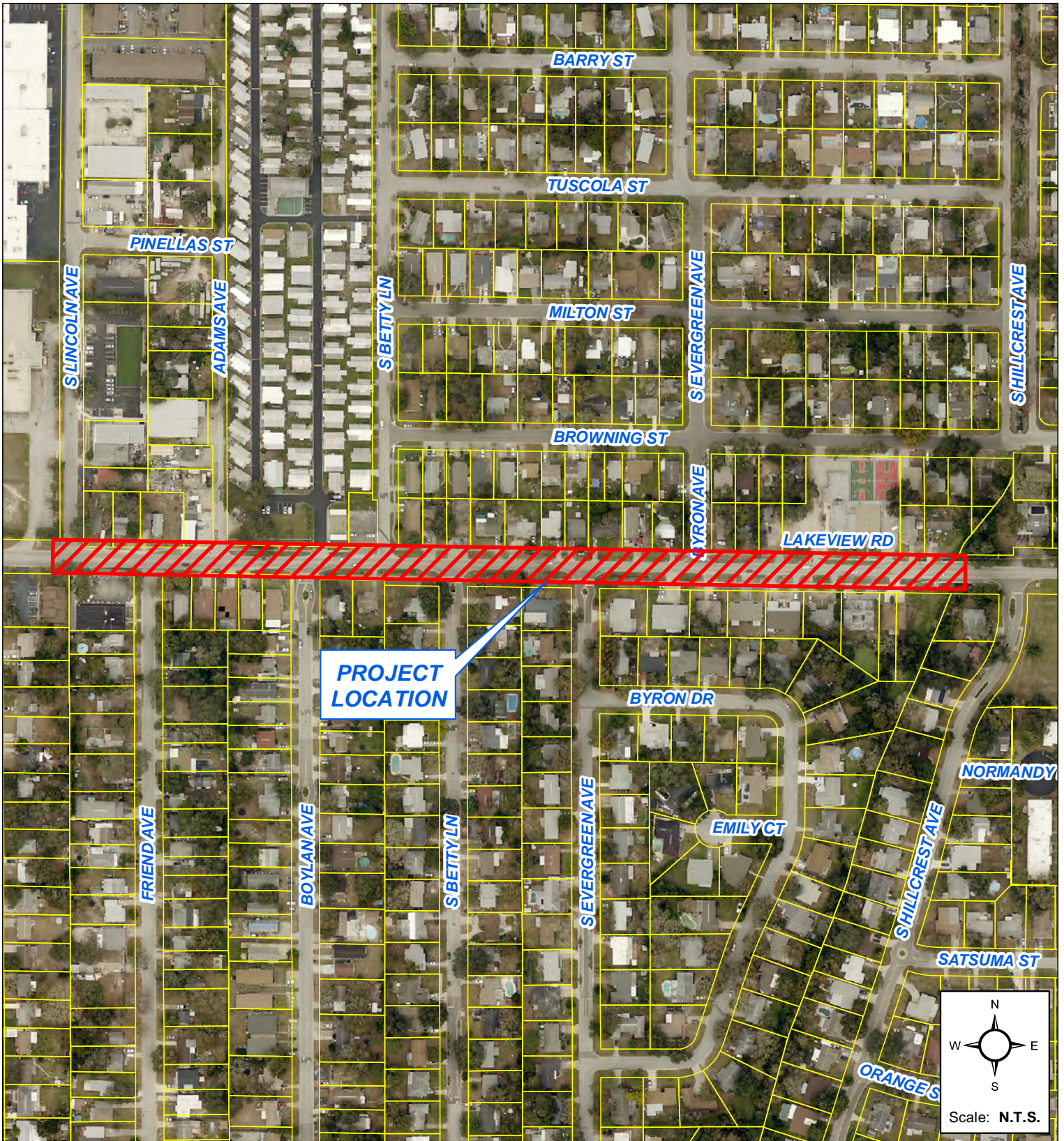


LOCATION MAP



Lakeview Road Utility Relocation Pinellas County JPA (Project #19-0013-UT)



Prepared by:
Engineering Department
Geographic Technology Division
100 S. Myrtle Ave, Clearwater, FL 33756
Ph: (727)562-4750, Fax: (727)526-4755
www.MyClearwater.com

Grid #: 306B	S-T-R 22-29s-15e	Aerial Flown 2019	Map Gen By: CRM	Reviewed By: TK	Date: 09/23/2019	Page 1 of 1
--------------	------------------	-------------------	-----------------	-----------------	------------------	-------------