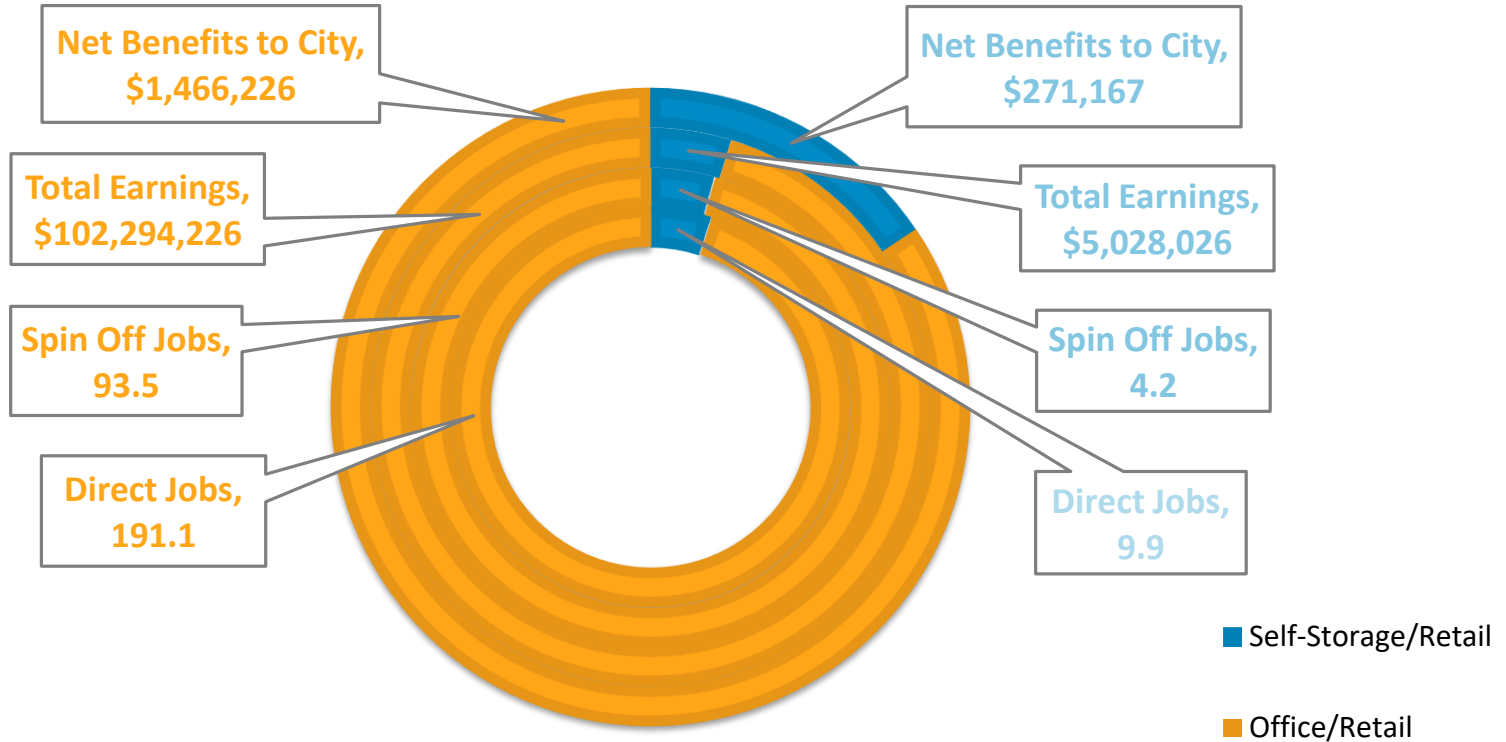


SELF-STORAGE IN US19 REGIONAL CENTER

Economic & Fiscal Impacts
October 2018

ECONOMIC & FISCAL IMPACT*

10 YEARS

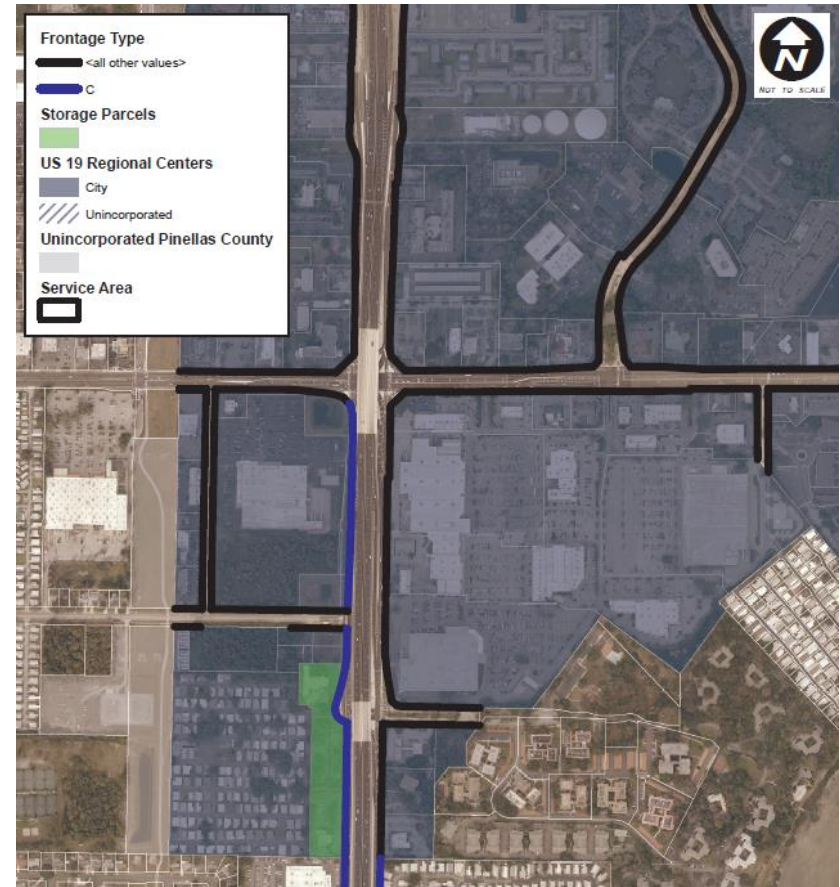


* Impact DataSource, Austin, TX – October 10, 2018

GULF-TO-BAY/DREW REGIONAL CENTER

3 Parcels

4.932 Acres

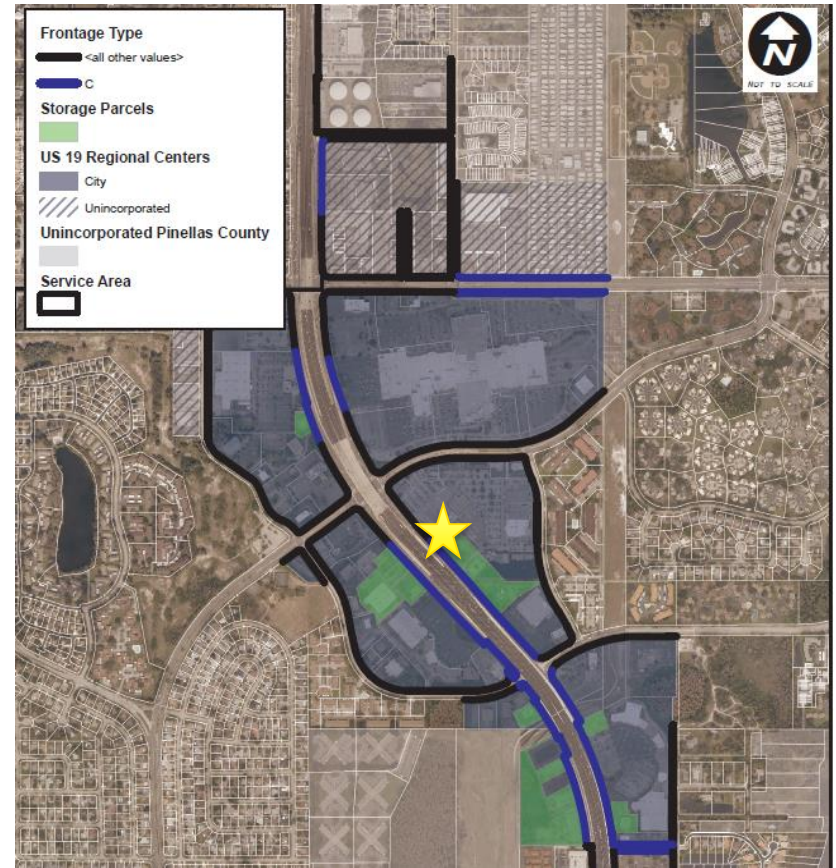


COUNTRYSIDE REGIONAL CENTER

13 Parcels

24.049 Acres

★ Subject site



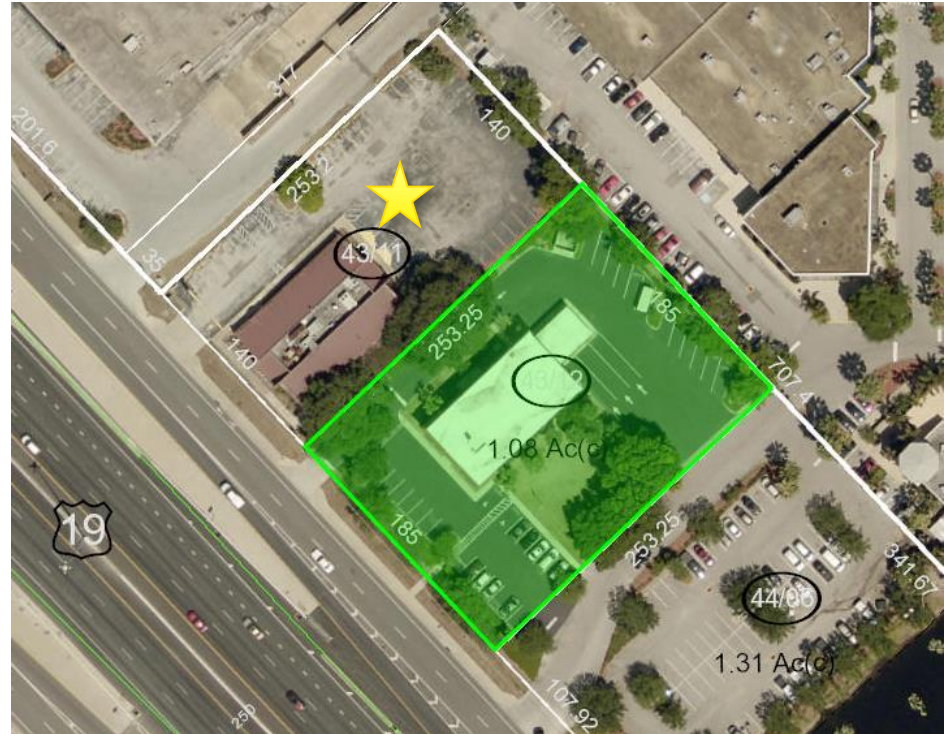
POTENTIAL ASSEMBLAGE?

1976 - Former Denny's

1975 - Centennial Bank

1.89 +/- Acres

★ Subject site



SELF-STORAGE IN US19 REGIONAL CENTER

Economic & Fiscal Impacts
October 2018