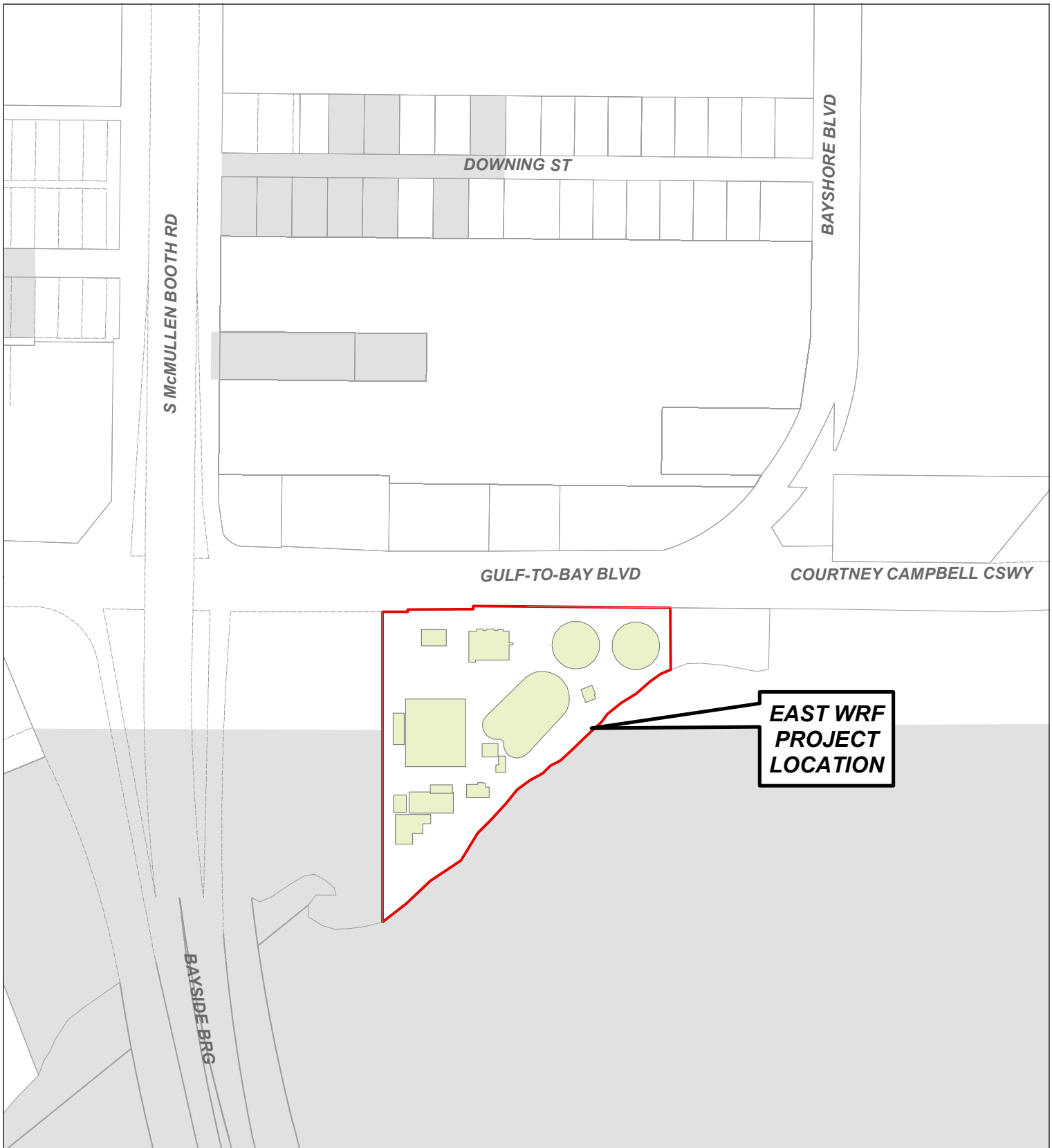


# LOCATION MAP



 <b>CLEARWATER</b> <small>BRIGHT AND BEAUTIFUL · RAY TO BEACH</small> Prepared by: Engineering Department Geographic Technology Division 100 S. Myrtle Ave, Clearwater, FL 33756 Ph: (727)562-4750, Fax: (727)526-4755 www.MyClearwater.com	<h2 style="text-align: center;">East WRF Effluent BOD Spikes Investigation Supplemental Work Order</h2>					 Scale: <b>N.T.S.</b>
	Map Gen By: <b>JCA</b>	Reviewed By: <b>PB</b>	Date: <b>8/14/2018</b>	Grid #: <b>N/A</b>	S-T-R: <b>N/A</b>	