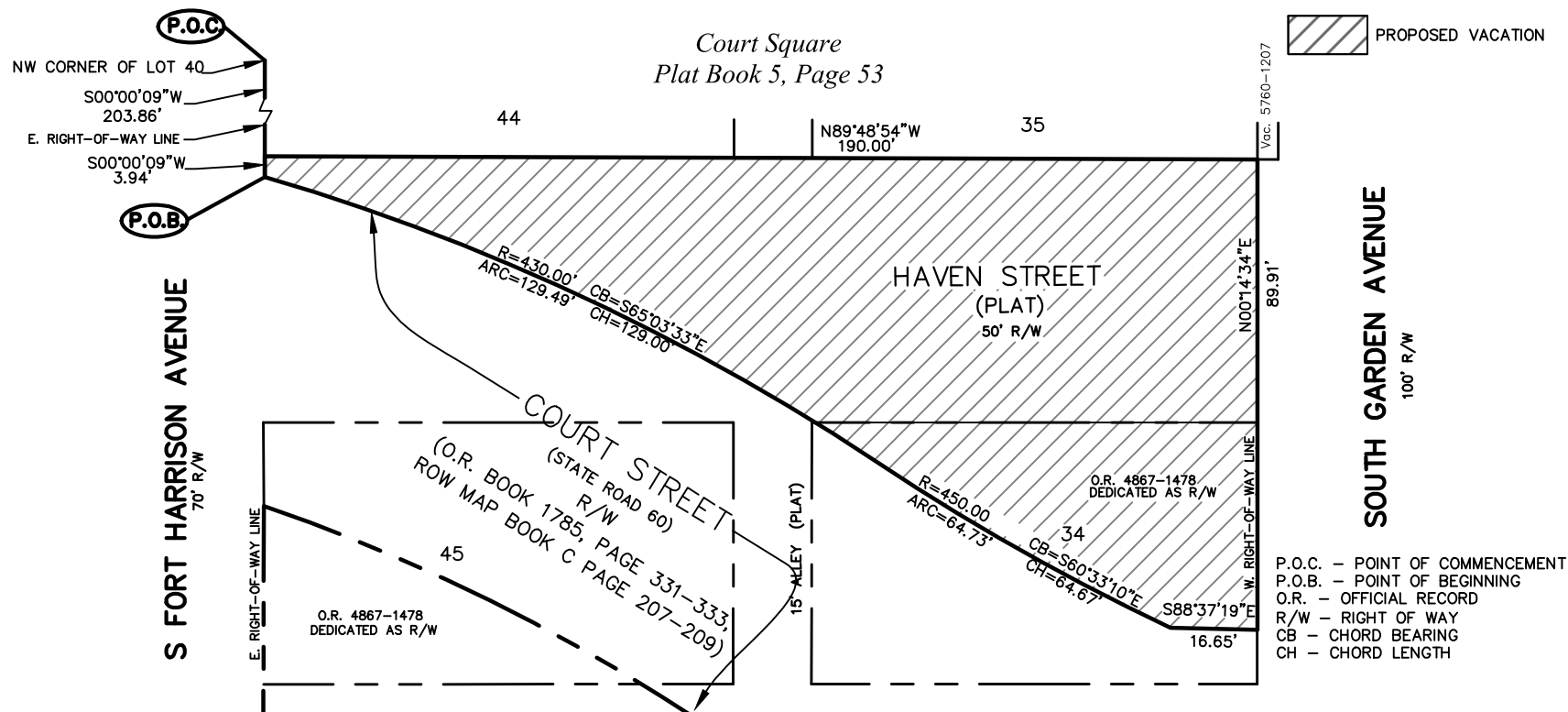


This is not a survey
N.T.S.



CITY OF CLEARWATER
ENGINEERING DEPARTMENT

DRAWN BY
L. Moody

CHECKED BY
T. Mahony

Platted and Dedicated Right of Way to be Declared Surplus

DWG. NO.
Lgl_2017-08

SECT-TWNSP-RNG 16 - 20 - 15

DATE DRAWN

SHEET
3 OF 3

5/5/17