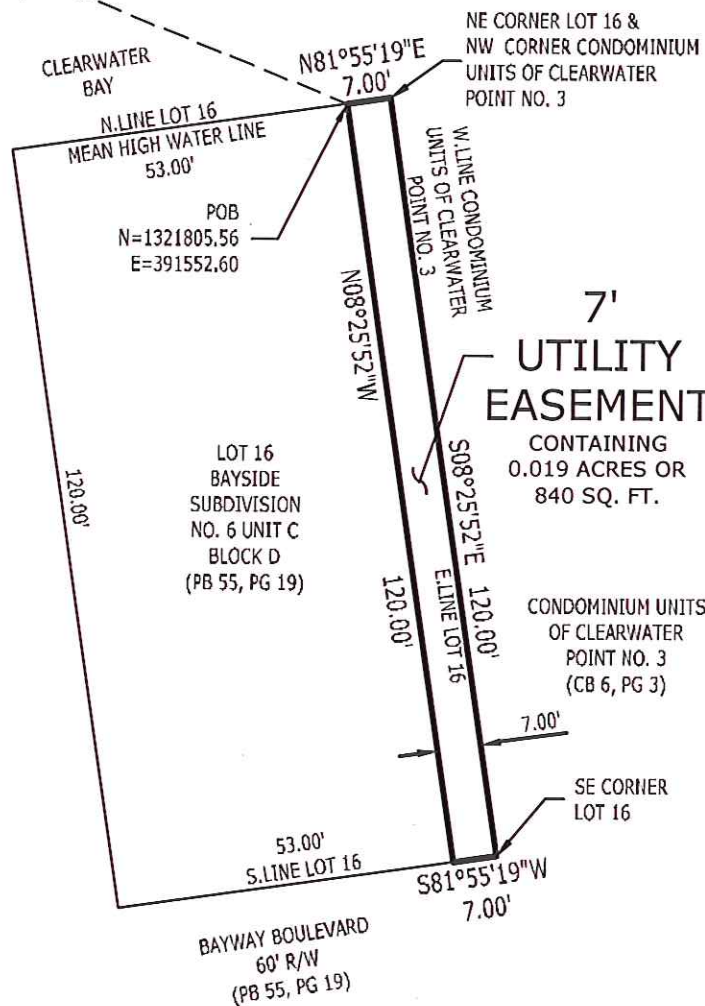
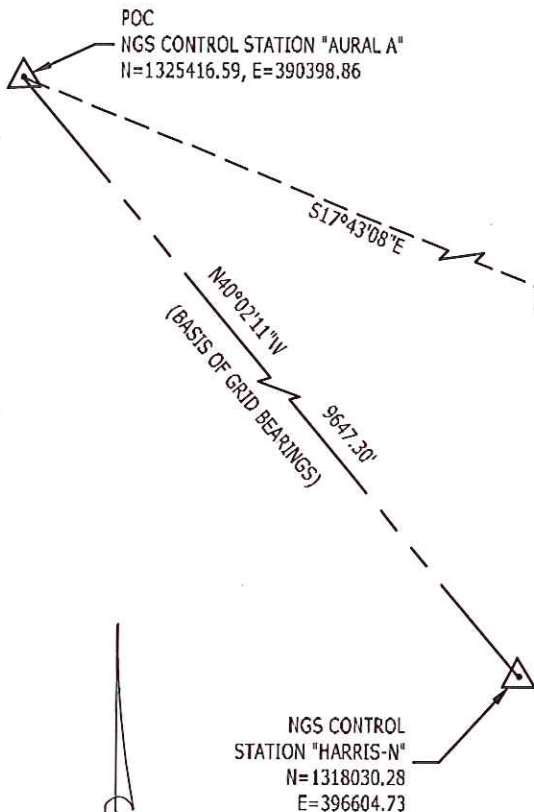
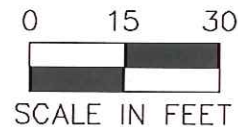


THIS IS NOT A SURVEY

SECTION 17, TOWNSHIP 29 SOUTH, RANGE 15 EAST
PINELLAS COUNTY, FLORIDA

EXHIBIT A



LEGEND

- PB = PLAT BOOK
- PG = PAGE
- POC = POINT OF COMMENCEMENT
- POB = POINT OF BEGINNING
- R/W = RIGHT-OF-WAY
- NGS = NATIONAL GEODETIC SURVEY
- CB = CONDOMINIUM PLAT BOOK

SEE SHEET 2 OF 2 FOR LEGAL DESCRIPTION

CITY OF CLEARWATER

7' UTILITY EASEMENT

SCALE 1"=30'	DATE 1/27/17	JOB No. 2110-215-000		
DRAWN JMA	CHECKED DWM	SECTION 17	TOWNSHIP 29 S	RANGE 15 E

King
ENGINEERING ASSOCIATES, INC.

4921 Memorial Highway
One Memorial Center, Suite 300
Tampa, Florida 33634
Phone 813 880-8881
Fax 813 880-8882
www.kingengineering.com
LB2610

CERTIFIED AS TO SKETCH AND LEGAL DESCRIPTION
Sketch and Legal Description not valid without the signature and the
original raised seal of a Florida licensed Surveyor and Mapper.

DAVID WILLIAM MCDANIEL
PROFESSIONAL SURVEYOR AND MAPPER
STATE OF FLORIDA # LS5840
CERTIFICATE OF AUTHORIZATION No. LB 2610

EXHIBIT A

LEGAL DESCRIPTION: (BY KING ENGINEERING)

7' UTILITY EASEMENT

A PARCEL OF LAND, 7 FEET IN WIDTH, BEING A PORTION OF LOT 16, BLOCK D, BAYSIDE SUBDIVISION NO. 6 UNIT C, AS RECORDED IN PLAT BOOK 55 AT PAGE 19, PUBLIC RECORDS OF PINELLAS COUNTY, FLORIDA, LOCATED IN SECTION 17, TOWNSHIP 29 SOUTH, RANGE 15 EAST AND BEING MORE PARTICULARLY DESCRIBED AS FOLLOWS:

COMMENCE AT NATIONAL GEODETIC SURVEY (NGS) CONTROL STATION "AURAL A" POINT HAVING A NORTHING OF 1325416.59 AND AN EASTING OF 390398.86, BASED UPON THE FLORIDA STATE PLANE COORDINATE SYSTEM (WEST ZONE), NORTH AMERICAN DATUM 1983/1990 ADJUSTMENT (NAD 83/90), LYING N40°02'11"W (BEING THE BASIS OF GRID BEARING FOR THIS DESCRIPTION), A DISTANCE OF 9647.30 FEET FROM NATIONAL GEODETIC SURVEY (NGS) CONTROL STATION "HARRIS N"; THENCE S17°43'08"E, A DISTANCE OF 3790.86 FEET TO A POINT LOCATED ON THE NORTH LINE OF LOT 16 AND THE SEAWALL LINE, BAYSIDE SUBDIVISION NO. 6 UNIT C, AS RECORDED IN PLAT BOOK 55 AT PAGE 19, PUBLIC RECORDS OF PINELLAS COUNTY, FLORIDA, SAME BEING THE APPARENT MEAN HIGH WATER LINE OF CLEARWATER BAY, SAME ALSO BEING THE POINT OF BEGINNING AND HAVING A NORTHING OF 1321805.56 AND AN EASTING OF 391552.60; THENCE N81°55'19"E, ALONG SAID NORTH LINE, A DISTANCE OF 7.00 FEET TO THE NORTHEAST CORNER OF SAID LOT 16, SAME BEING THE NORTHWEST CORNER OF CONDOMINIUM UNITS OF CLEARWATER POINT NO. 3, AS RECORDED IN CONDOMINIUM PLAT BOOK 6 AT PAGE 3, PUBLIC RECORDS OF PINELLAS COUNTY, FLORIDA; THENCE S08°25'52"E, ALONG THE EAST LINE OF SAID LOT 16, SAME BEING THE WEST LINE OF SAID CONDOMINIUM UNITS OF CLEARWATER POINT NO. 3, A DISTANCE OF 120.00 FEET TO THE SOUTHEAST CORNER OF SAID LOT 16; THENCE S81°55'19"W, ALONG THE SOUTH LINE OF SAID LOT 16, A DISTANCE OF 7.00 FEET; THENCE LEAVING SAID SOUTH LINE, N08°25'52"W, ALONG A LINE 7.00 FEET WEST OF AND PARALLEL WITH SAID EAST LINE OF LOT 16, A DISTANCE OF 120.00 FEET TO THE POINT OF BEGINNING.

CONTAINING 0.019 ACRES OR 840 SQUARE FEET MORE OR LESS.

SURVEYOR'S NOTES:

1. NO INSTRUMENTS OF RECORD REFLECTING EASEMENTS, RIGHTS-OF-WAY, AND OR OWNERSHIP WERE FURNISHED TO OR PURSUED BY THE UNDERSIGNED.
2. UNLESS IT BEARS THE SIGNATURE AND THE ORIGINAL RAISED SEAL OF A FLORIDA LICENSED SURVEYOR AND MAPPER THIS DRAWING, SKETCH, PLAT OR MAP IS FOR INFORMATIONAL PURPOSES ONLY AND IS NOT VALID.
3. THIS IS A SKETCH AND LEGAL DESCRIPTION ONLY, NOT A FIELD SURVEY.
4. GRID BEARINGS SHOWN HEREON ARE BASED ON THE FLORIDA STATE PLANE COORDINATE SYSTEM, WEST ZONE, NORTH AMERICAN DATUM 1983/1990 ADJUSTMENT (NAD 83/90). MORE SPECIFICALLY THE LINE BETWEEN "AURAL A" AND "HARRIS N" BEING NORTH40°02'11"WEST.
5. DISTANCES SHOWN HEREON ARE IN US FEET.

SEE SHEET 1 OF 2 FOR SKETCH

CITY OF CLEARWATER

7' UTILITY EASEMENT

King
ENGINEERING ASSOCIATES, INC.

4921 Memorial Highway
One Memorial Center, Suite 300
Tampa, Florida 33634
Phone 813 880-8881
Fax 813 880-8882
www.kingengineering.com
LB2610