



Florida Department of
TRANSPORTATION

GULF BOULEVARD - SR 699 BICYCLE SAFETY ENHANCEMENT

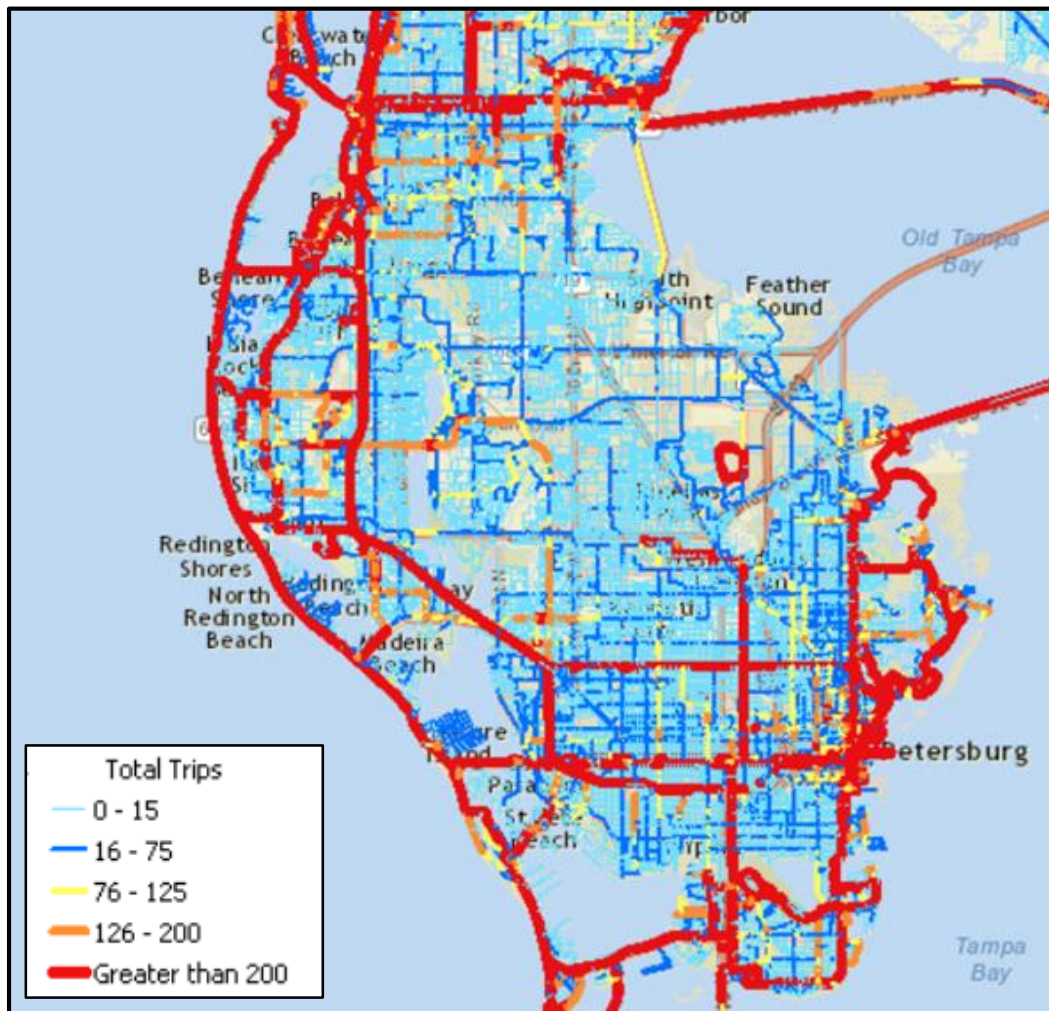
**from SR 682 (Pinellas Bayway) to
SR 688 (Walsingham Rd)**

Pinellas County, Florida



Existing Strava Bicycle Volume

(January 2010 – May 2015)





Increase safety by encouraging cyclists to use bike lane



Enhanced safety by providing bicyclist facilities



Establish a single continuous bike facility along Gulf Blvd



Existing Conditions

Looking south into the intersection of
SR 699 (Gulf Blvd) and SR 666
(Tom Stuart Cswy)



**Bike Lane Crosses Right
Turn Lane Condition**

Looking north away from the
intersection of SR 699 (Gulf Blvd)
and SR 666 (Tom Stuart Cswy)



**Bike Lane Adjacent to
Dedicated Bus Bay Condition**



Existing Conditions

**Looking North from the intersection of SR 699 (Gulf Blvd)
and SR 666 (Tom Stuart Cswy)**



Channelized Right Turn Lane Crosses Bike Lane Condition



Green Colored Pavement Bicycle Lane Treatments



Existing Condition



New Condition



Green Colored Pavement Bicycle Lane Treatments

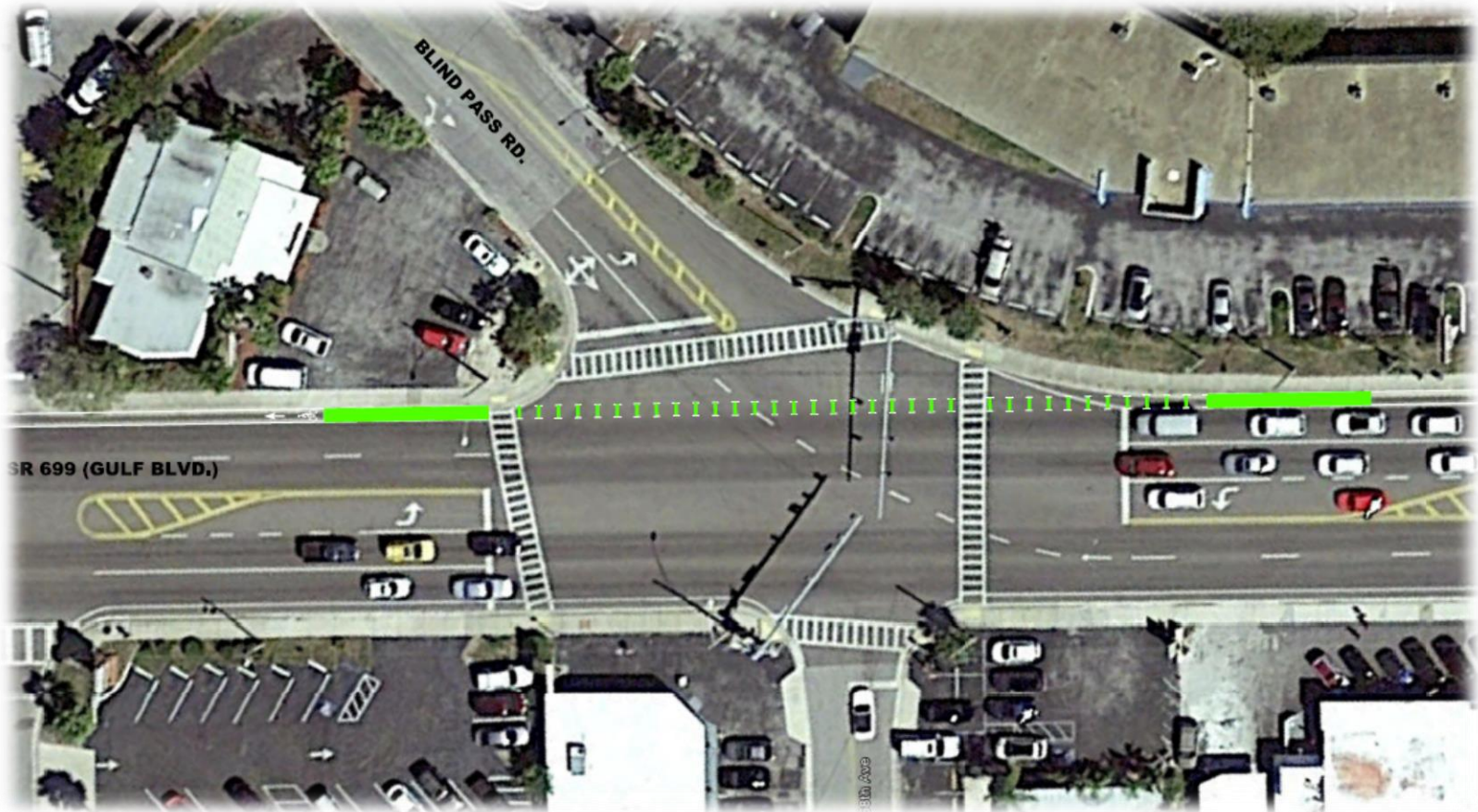
SR 699 (Gulf Blvd) / Gulf Winds Dr





Green Colored Pavement Bicycle Lane Treatments

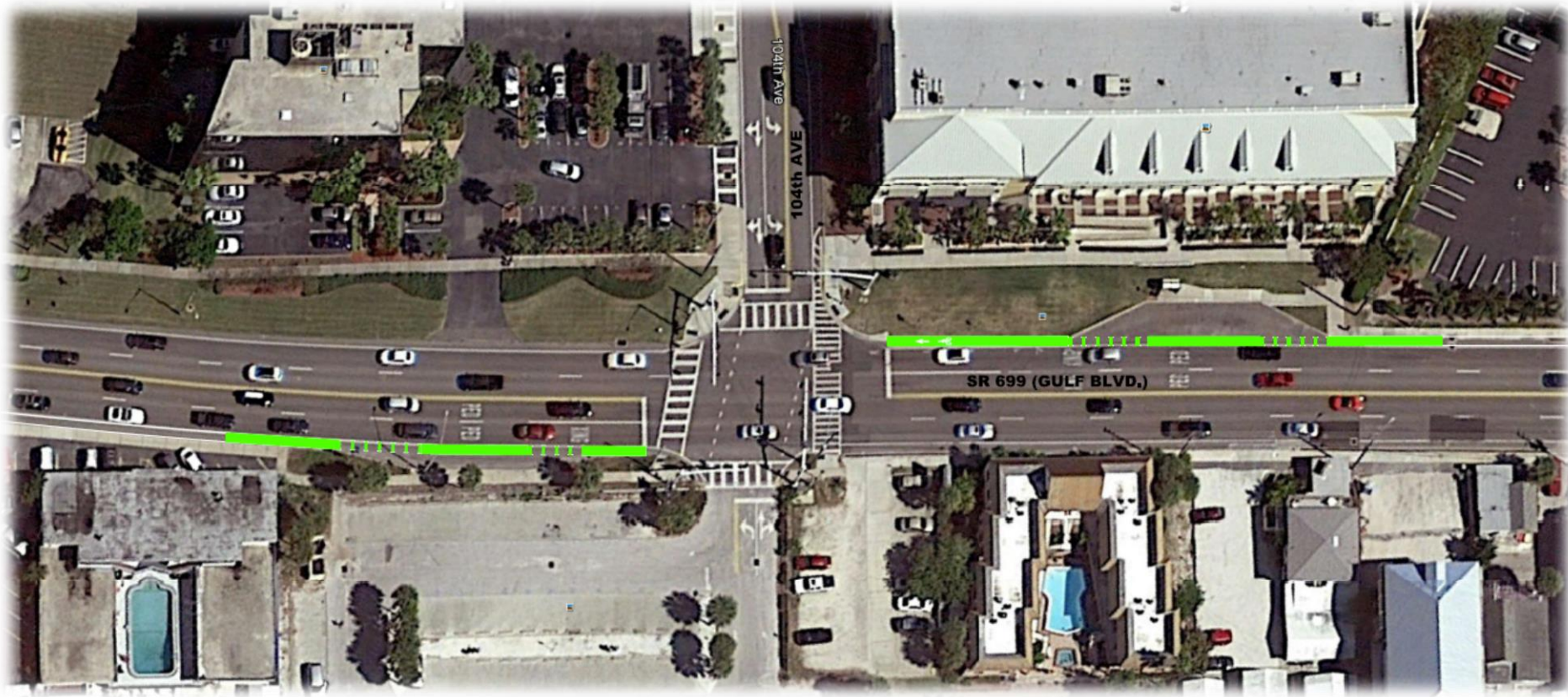
SR 699 (Gulf Blvd) / 68th Ave





Green Colored Pavement Bicycle Lane Treatments

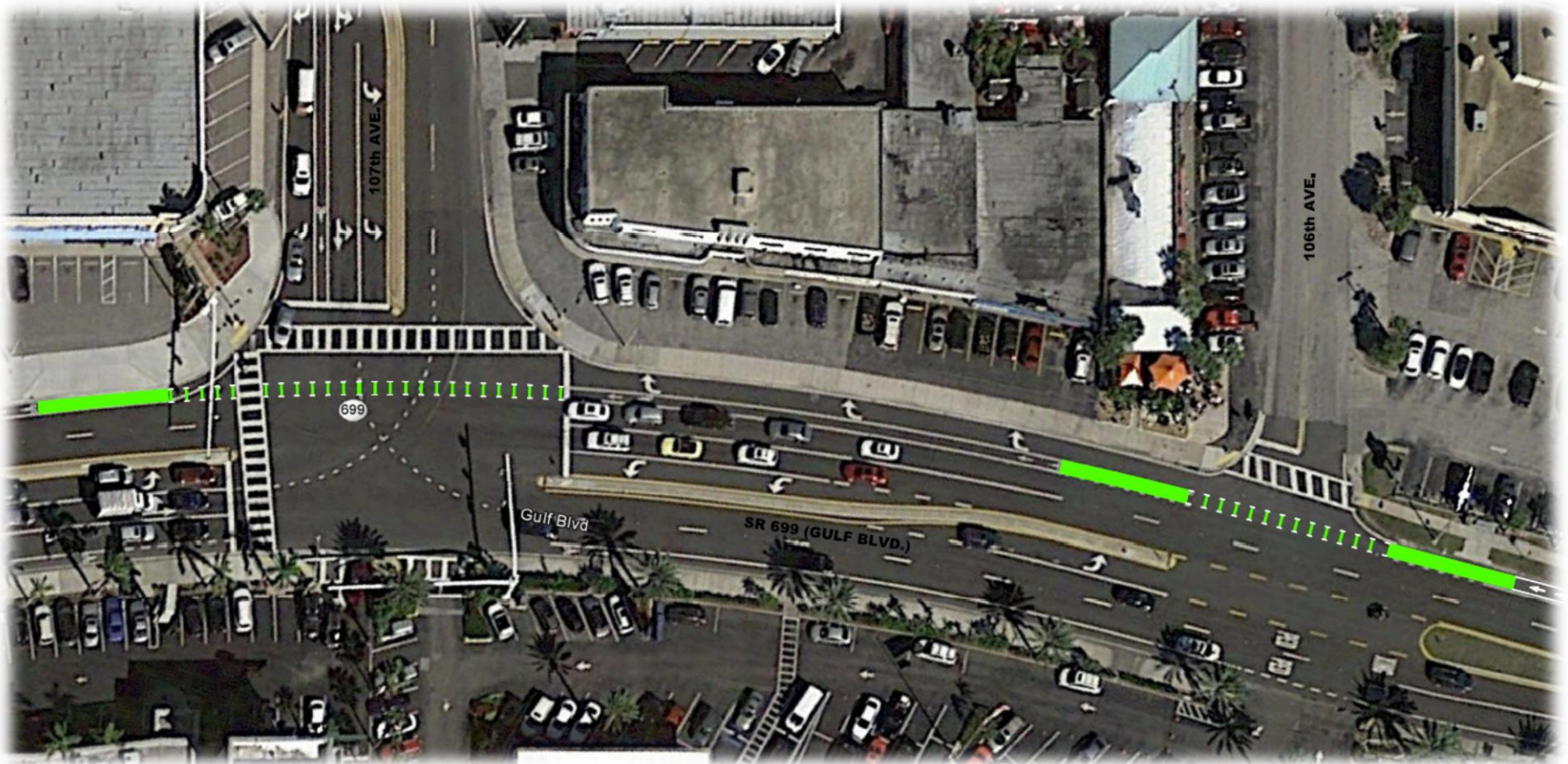
SR 699 (Gulf Blvd) / 104th Ave





Green Colored Pavement Bicycle Lane Treatments

SR 699 (Gulf Blvd) / 107th Ave





Green Colored Pavement Bicycle Lane Treatments

SR 699 (Gulf Blvd) / SR 666 (Tom Stuart Cswy)





Green Colored Pavement Bicycle Lane Treatments

SR 699 (Gulf Blvd) / SR 694 (Park Blvd N)



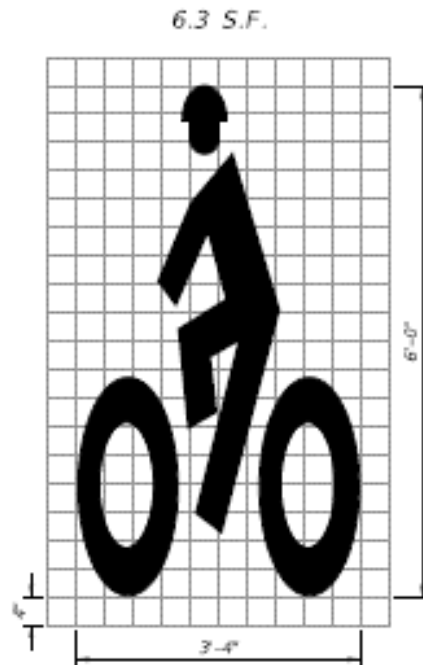


Green Colored Pavement Bicycle Lane Treatments

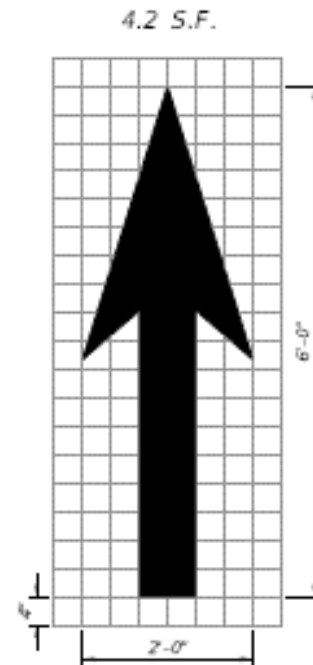
SR 699 (Gulf Blvd) / SR 694 (Park Blvd N) cont.



- Bike lane pavement message symbols
 - SR 699 (Gulf Blvd) from Blind Pass Bridge to 112th Ave



Helmeted Bicyclist Symbol



Bike Lane Arrow

- **An additional 300 feet of designated bike lanes and a southbound right-turn designated bike lane key hole**
 - **North of the 1st St E/
W Gulf Blvd signalized
intersection**



- Add sharrows & “BIKES MAY USE FULL LANE” signs
 - Gulf Blvd from 112th Ave to 131st Ave
 - Gulf Blvd from Madeira Way to 164th Ave





- ***Implement improvements through innovative contract methods***
 - ***Managed by FDOT & funded by the Highway Safety Improvement Program***
- ***Working w/ MPO & local Gov'ts SPOTlight emphasis area activities to identify larger scale/longer term improvements***
- ***Questions?***





Florida Department of
TRANSPORTATION

GULF BOULEVARD - SR 699 BICYCLE SAFETY ENHANCEMENT

**from SR 682 (Pinellas Bayway) to
SR 688 (Walsingham Rd)**

Pinellas County, Florida