



CLEARWATER
SUSTAINABILITY & RESILIENCY

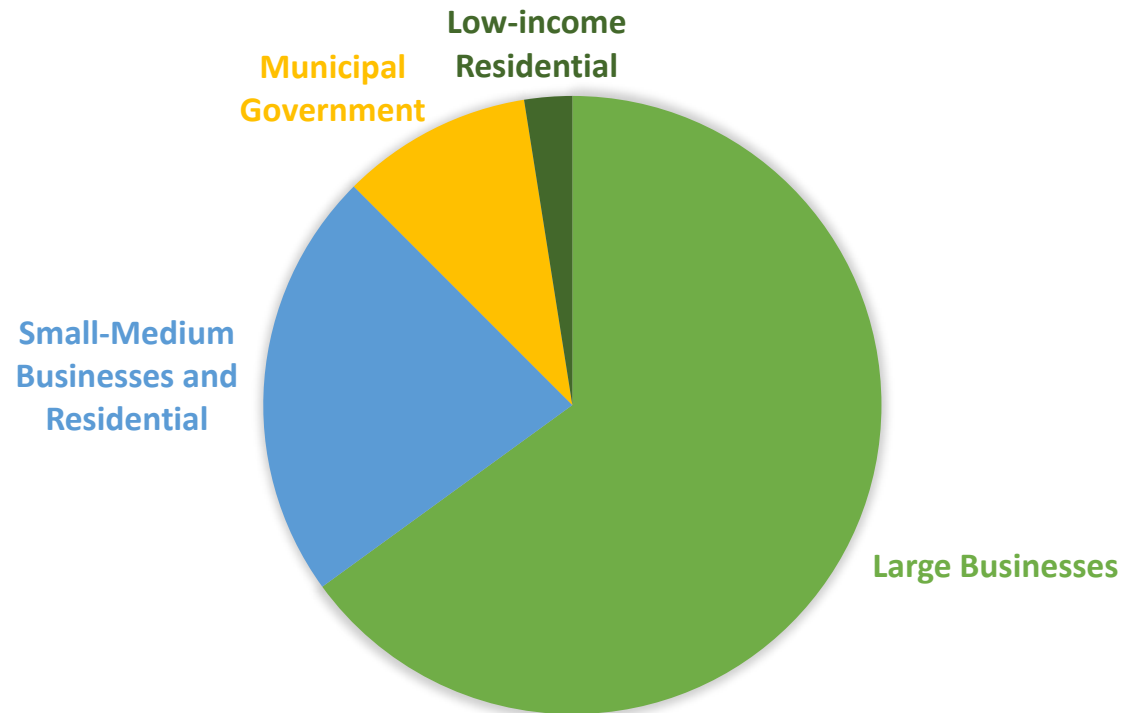
August 2020

Duke Clean Energy Connection Program

Program Overview

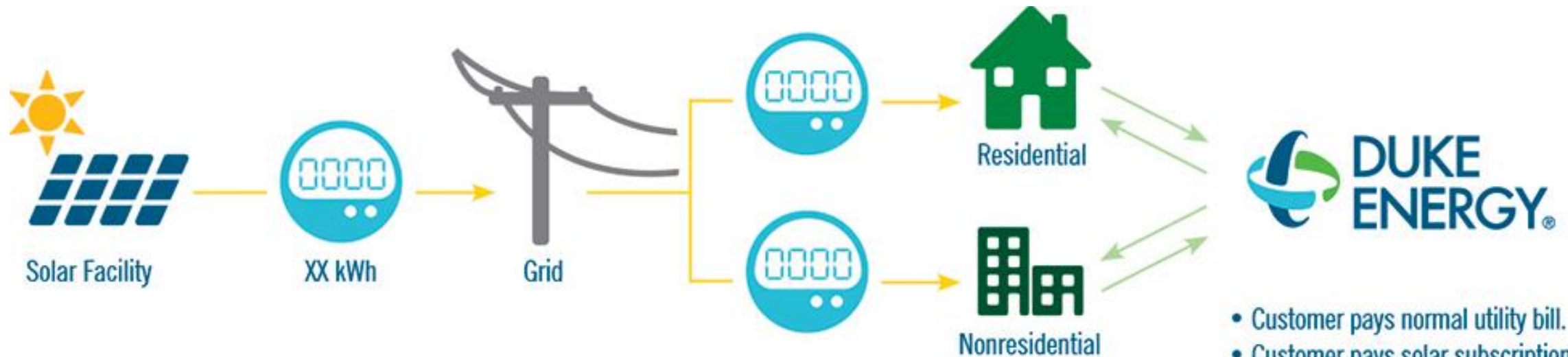
- If approved, the program will be ready by 2022

PERCENT OF ALLOCATED PROGRAM ENROLLMENT



Program Overview

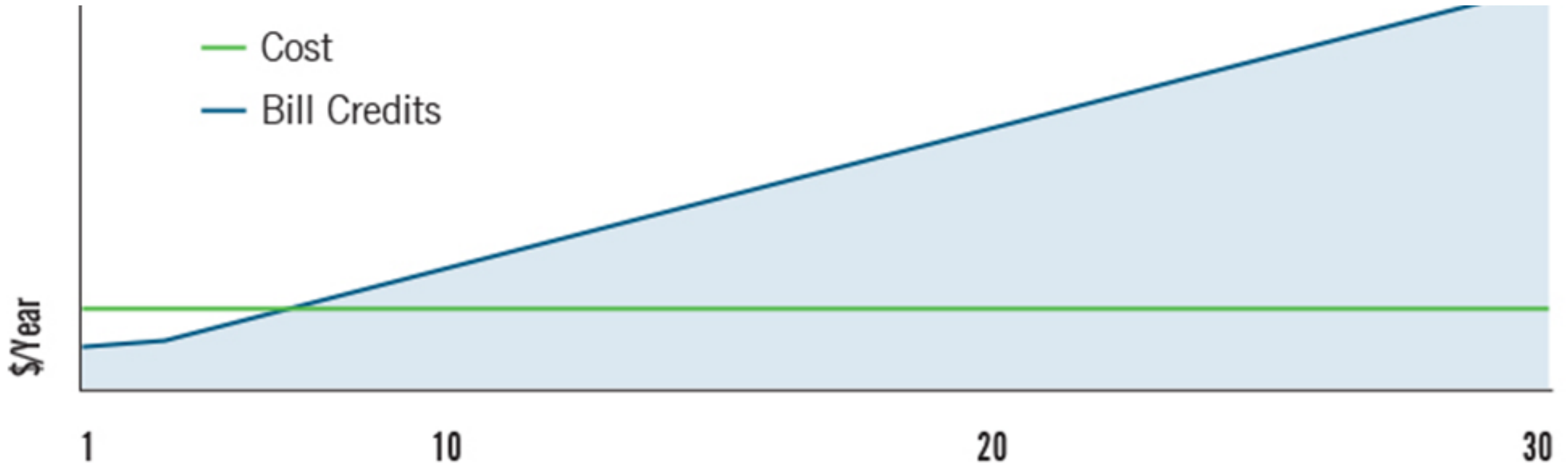
- Duke solar power feeds into electric grid across Florida
- The city would receive a monthly bill credit associated with the amount of solar energy our share produces



- Customer pays normal utility bill.
- Customer pays solar subscription fee.
- Duke Energy pays customer based on their share of the generation.

Program Overview

- For 3 years = credit rate of \$0.04037/kWh (net charge)
- After 3 years = credit rate increases 1.5% annually
- Year 3-5 = annual credits exceed annual cost
- Year 5-7 = net credit



Our Subscription Options

Annual energy usage = 69,277,271 kWh

Annual bill before subscription = \$6,719,895.29

Percentage of annual energy usage	Solar kW generated	Average Annual Cost (Years 1-3)	Total Annual Bill
100%	28,245	\$33,929.25	\$6,753,824.54
80%	22,596	\$27,143.40	\$6,747,038.69
60%	16,947	\$20,357.55	\$6,740,252.84
50%	14,123	\$16,965.23	\$6,736,860.51
40%	11,298	\$13,571.70	\$6,733,466.99
20%	5,649	\$6,785.85	\$6,726,681.14

Annual Energy Use (kWh)

69,277,271

Suggested Subscription Size (kW)

28,244.16

Large Customer Receiving Allocation Over Three Years

Program Year	Calendar Year	Annual Subscription Fee	Annual Estimated Energy Credit	Annual Estimated Payback (Payout)	Cumulative Payback (Payout)
1	2022	\$ (566,012.93)	\$ 559,344.69	\$ (6,668.24)	\$ (6,668.24)
2	2023	\$ (1,698,038.79)	\$ 1,675,240.13	\$ (22,798.65)	\$ (29,466.90)
3	2024	\$ (2,830,064.64)	\$ 2,793,182.17	\$ (36,882.48)	\$ (66,349.37)
4	2025	\$ (2,830,064.64)	\$ 2,813,502.63	\$ (16,562.02)	\$ (82,911.39)
5	2026	\$ (2,830,064.64)	\$ 2,841,105.57	\$ 11,040.93	\$ (71,870.46)
6	2027	\$ (2,830,064.64)	\$ 2,869,041.86	\$ 38,977.22	\$ (32,893.24)
7	2028	\$ (2,830,064.64)	\$ 2,905,241.88	\$ 75,177.24	\$ 42,284.00
8	2029	\$ (2,830,064.64)	\$ 2,925,884.84	\$ 95,820.20	\$ 138,104.20
9	2030	\$ (2,830,064.64)	\$ 2,954,776.95	\$ 124,712.30	\$ 262,816.50
10	2031	\$ (2,830,064.64)	\$ 2,983,973.20	\$ 153,908.55	\$ 416,725.05
11	2032	\$ (2,830,064.64)	\$ 3,021,722.57	\$ 191,657.93	\$ 608,382.98
12	2033	\$ (2,830,064.64)	\$ 3,043,249.83	\$ 213,185.19	\$ 821,568.17
13	2034	\$ (2,830,064.64)	\$ 3,073,316.27	\$ 243,251.63	\$ 1,064,819.80
14	2035	\$ (2,830,064.64)	\$ 3,103,658.95	\$ 273,594.31	\$ 1,338,414.11
15	2036	\$ (2,830,064.64)	\$ 3,142,858.14	\$ 312,793.50	\$ 1,651,207.61
16	2037	\$ (2,830,064.64)	\$ 3,165,146.01	\$ 335,081.37	\$ 1,986,288.98
17	2038	\$ (2,830,064.64)	\$ 3,196,277.06	\$ 366,212.41	\$ 2,352,501.39
18	2039	\$ (2,830,064.64)	\$ 3,228,297.72	\$ 398,233.08	\$ 2,750,734.47
19	2040	\$ (2,830,064.64)	\$ 3,269,488.12	\$ 439,423.48	\$ 3,190,157.95
20	2041	\$ (2,830,064.64)	\$ 3,293,042.83	\$ 462,978.19	\$ 3,653,136.14

One Month Commitment (after credit)

(\$555.67)

Next Steps



We would need to notify Duke of the total megawatts we subscribe to through the program. Specific accounts are not needed yet.



Advisable to sign up for the maximum desired amount, as program oversubscription is expected.



Subscription is open until August 31st.