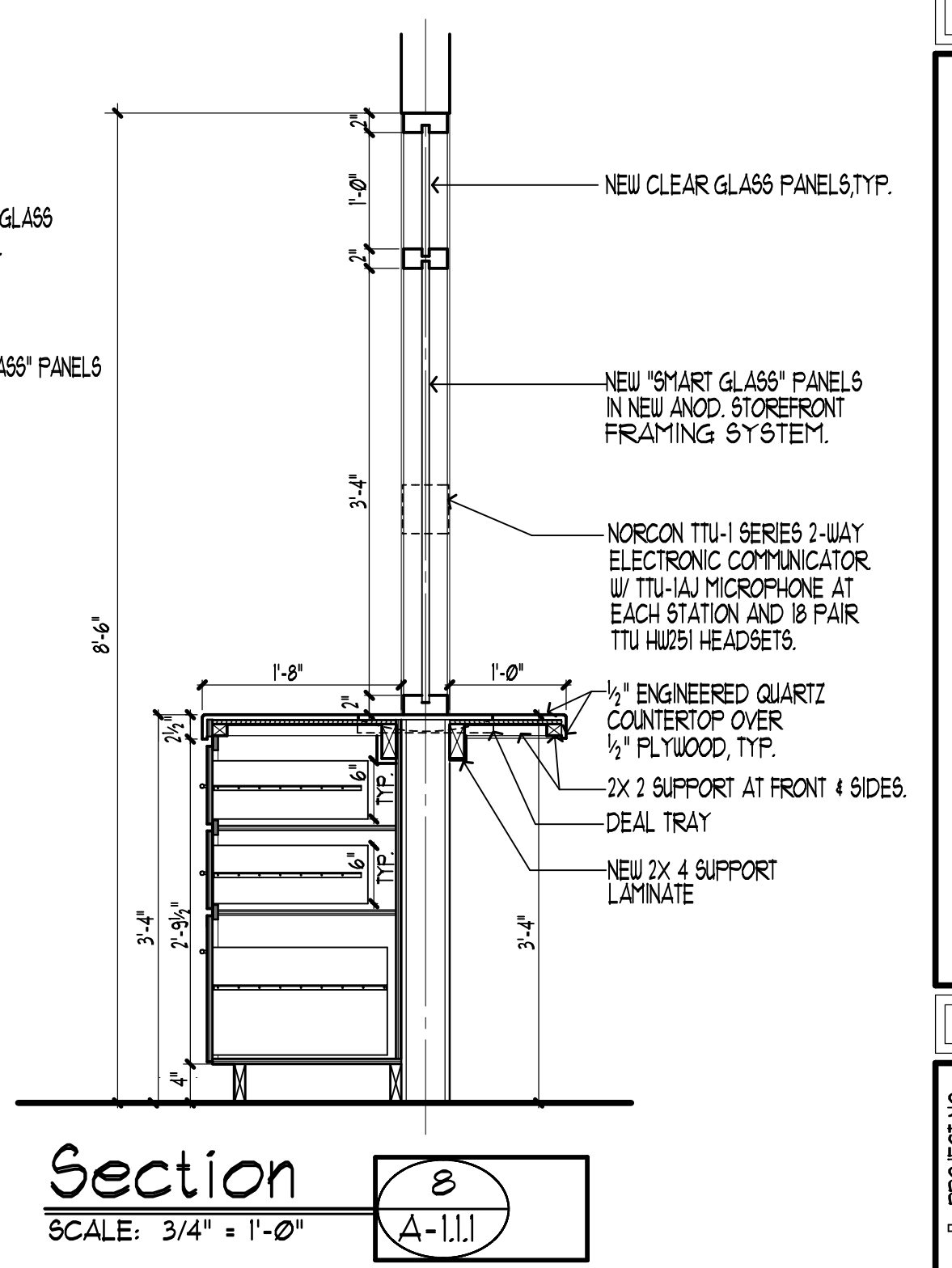
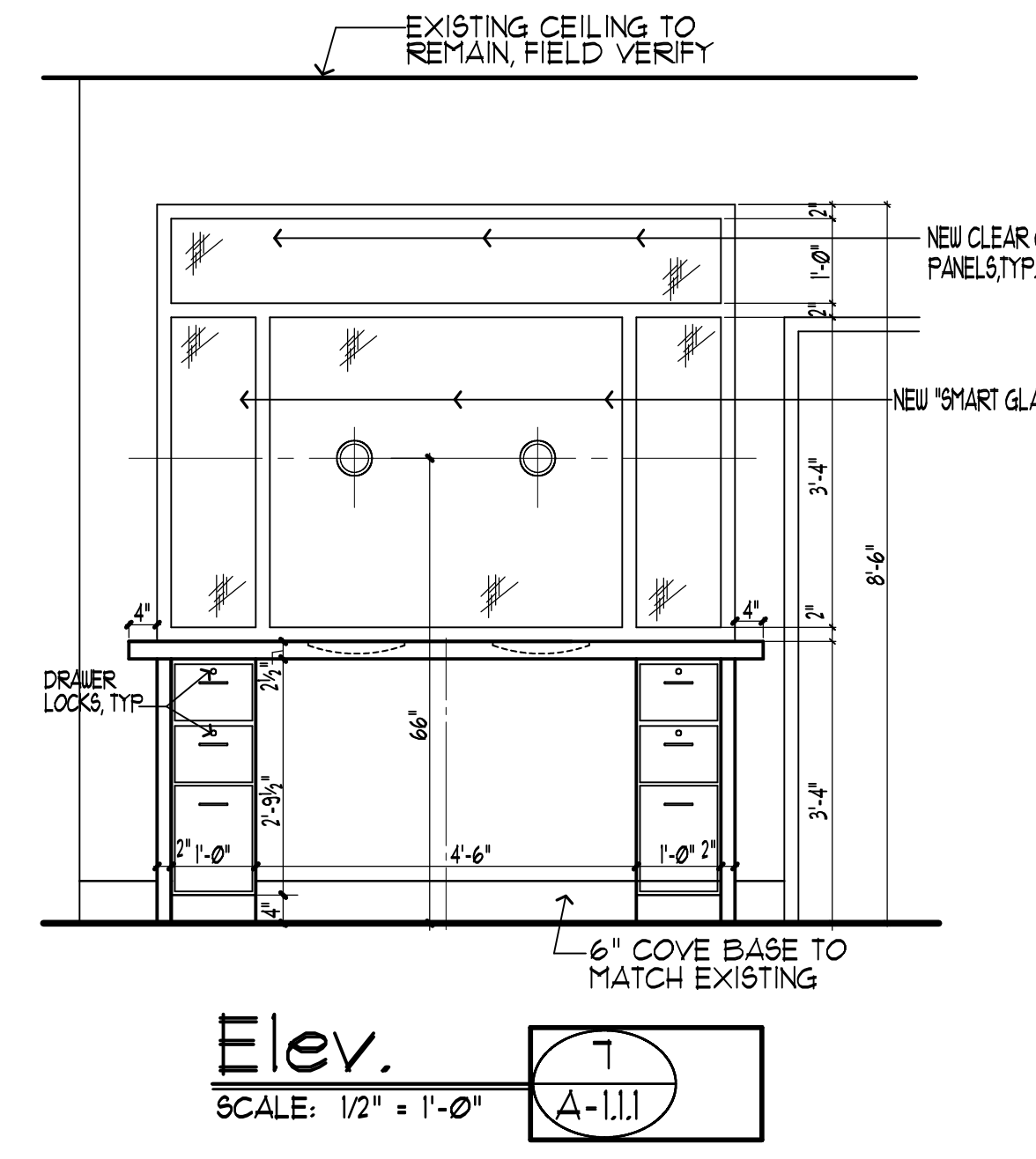
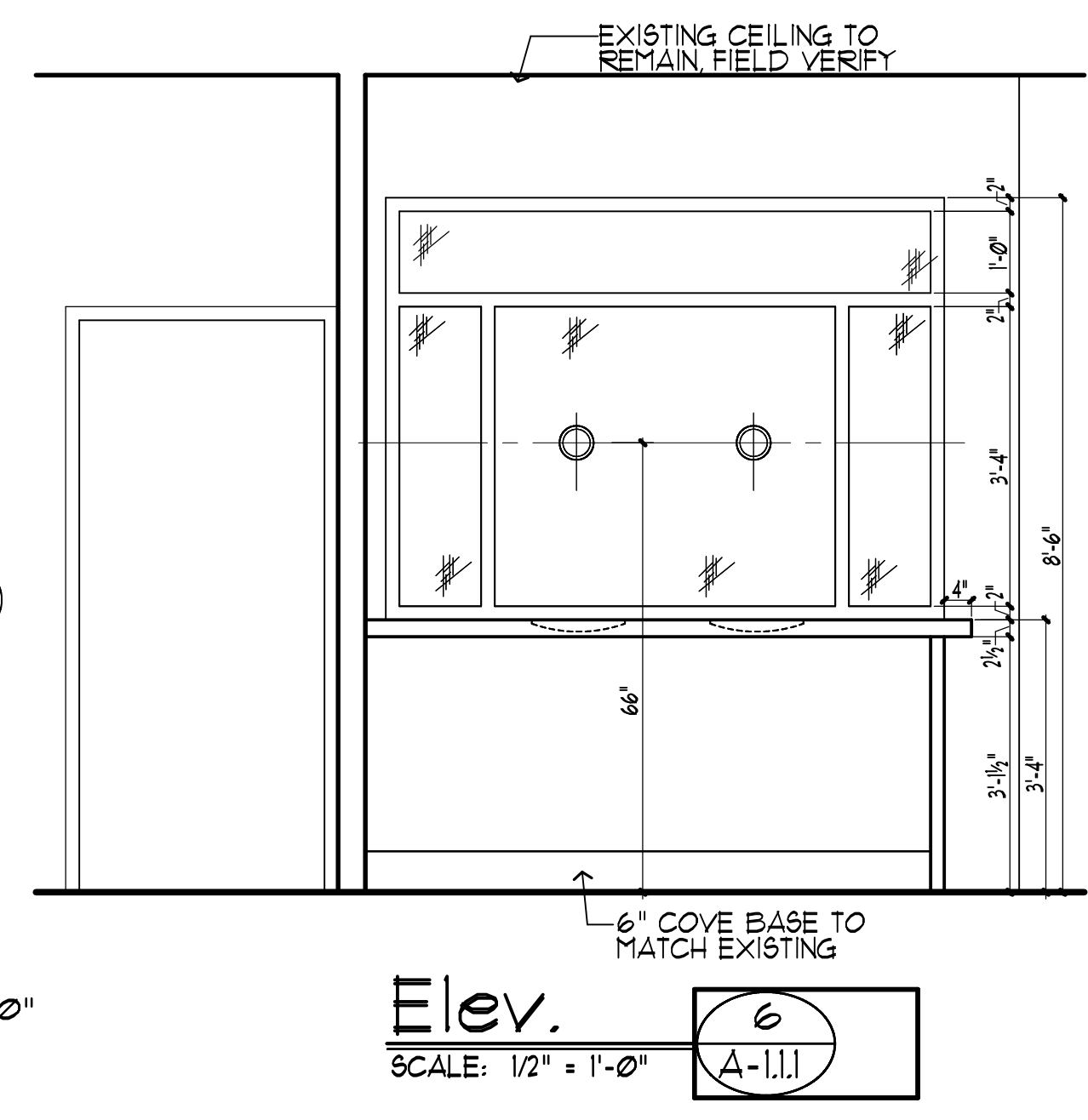
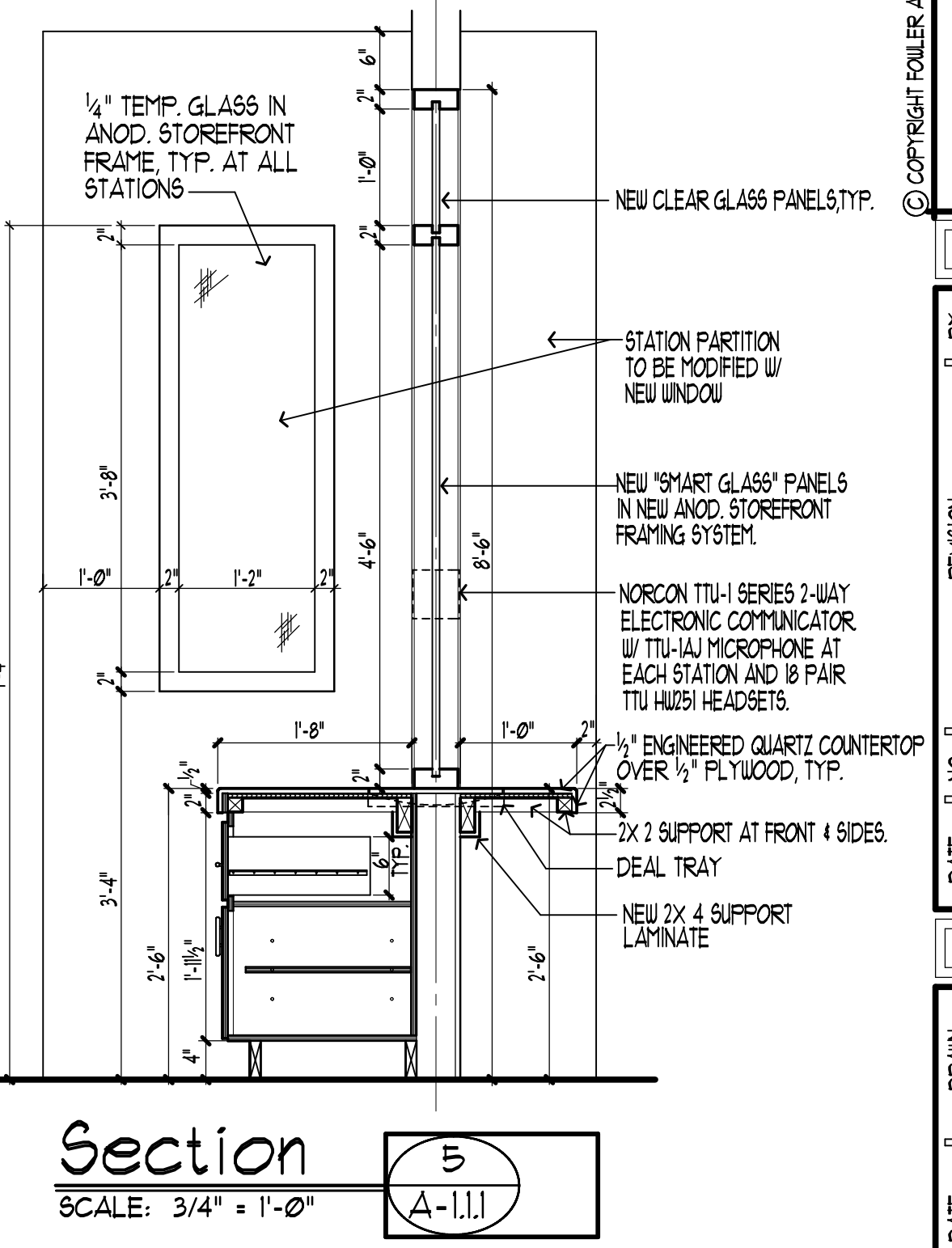
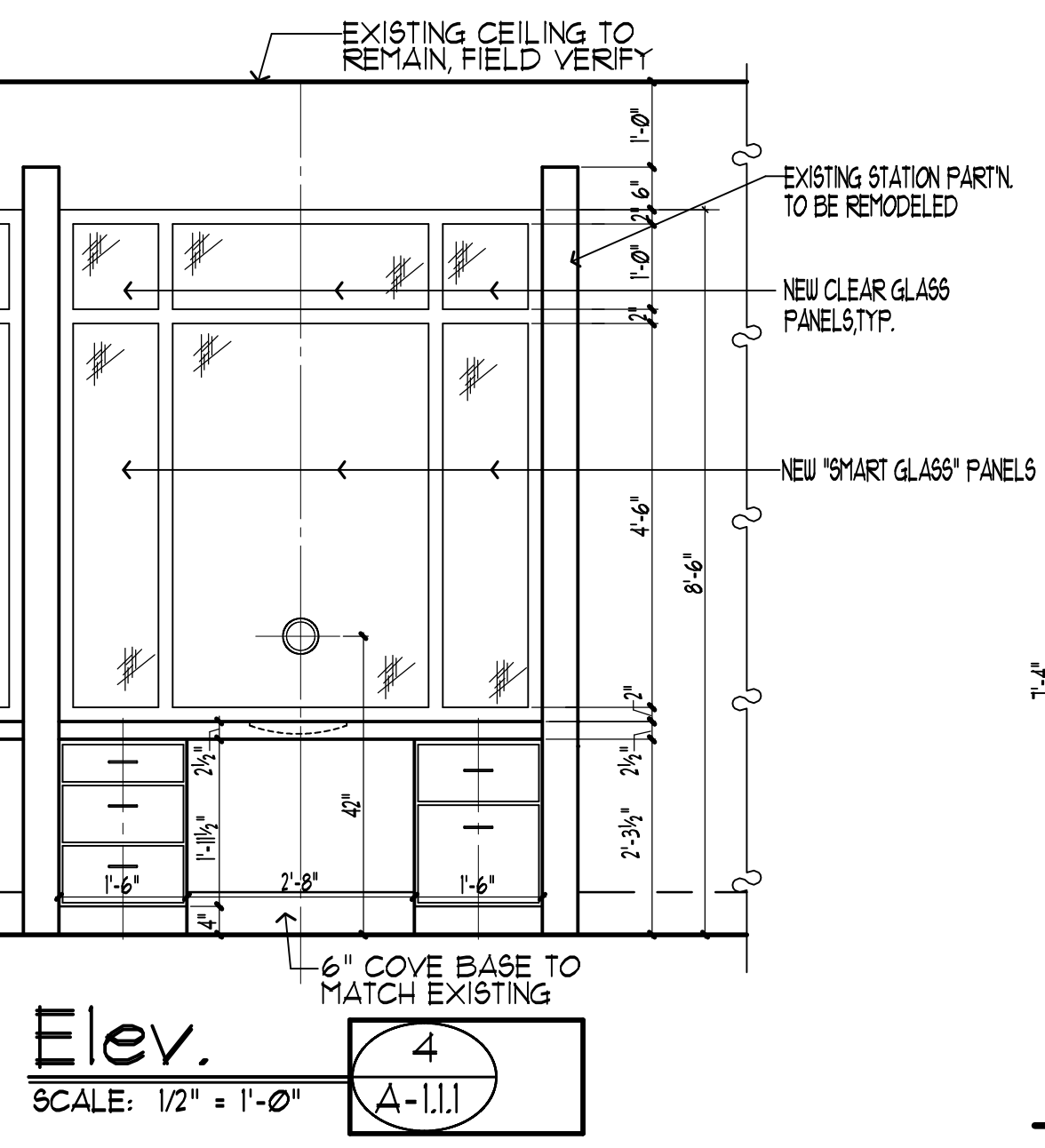
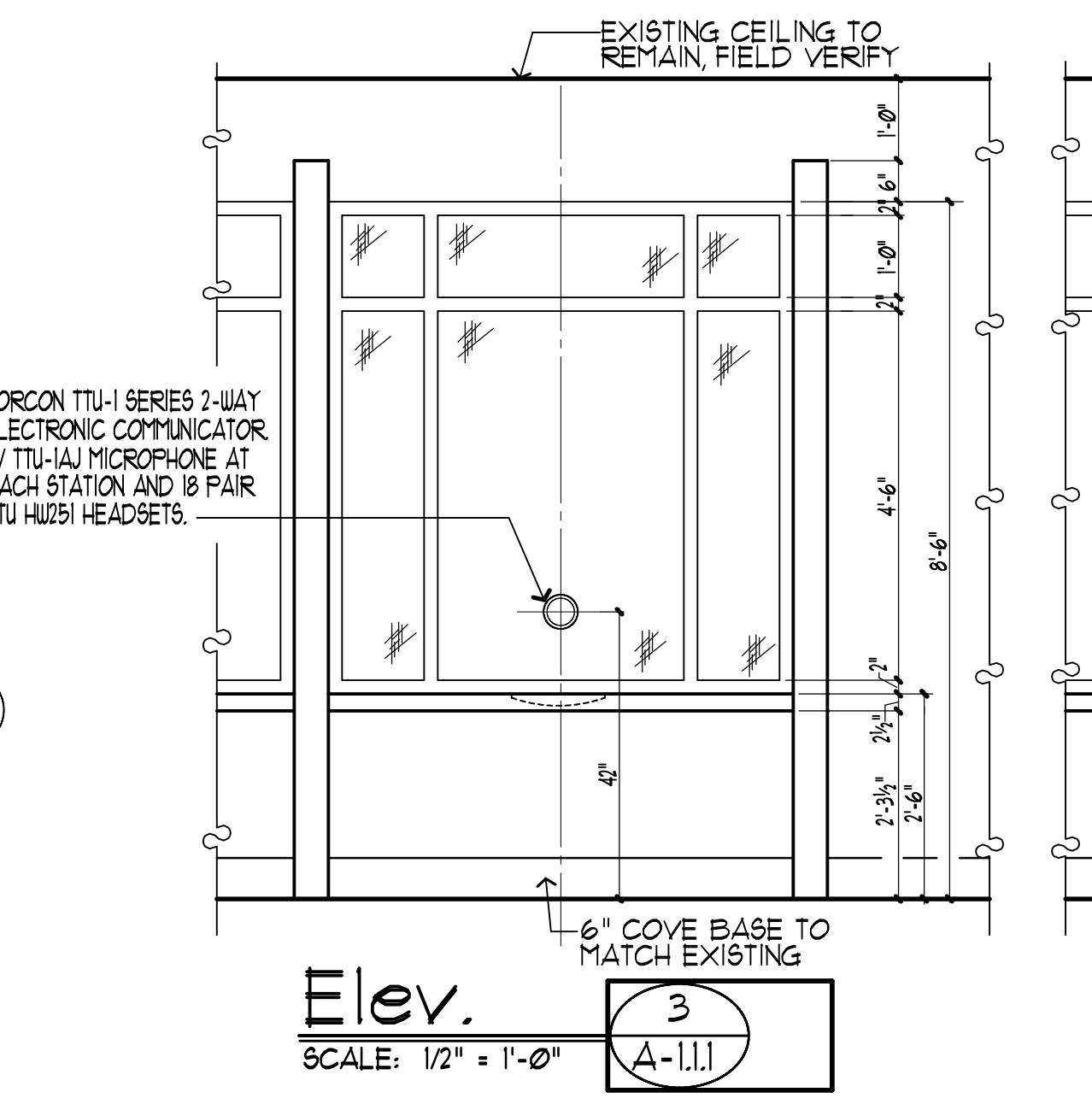
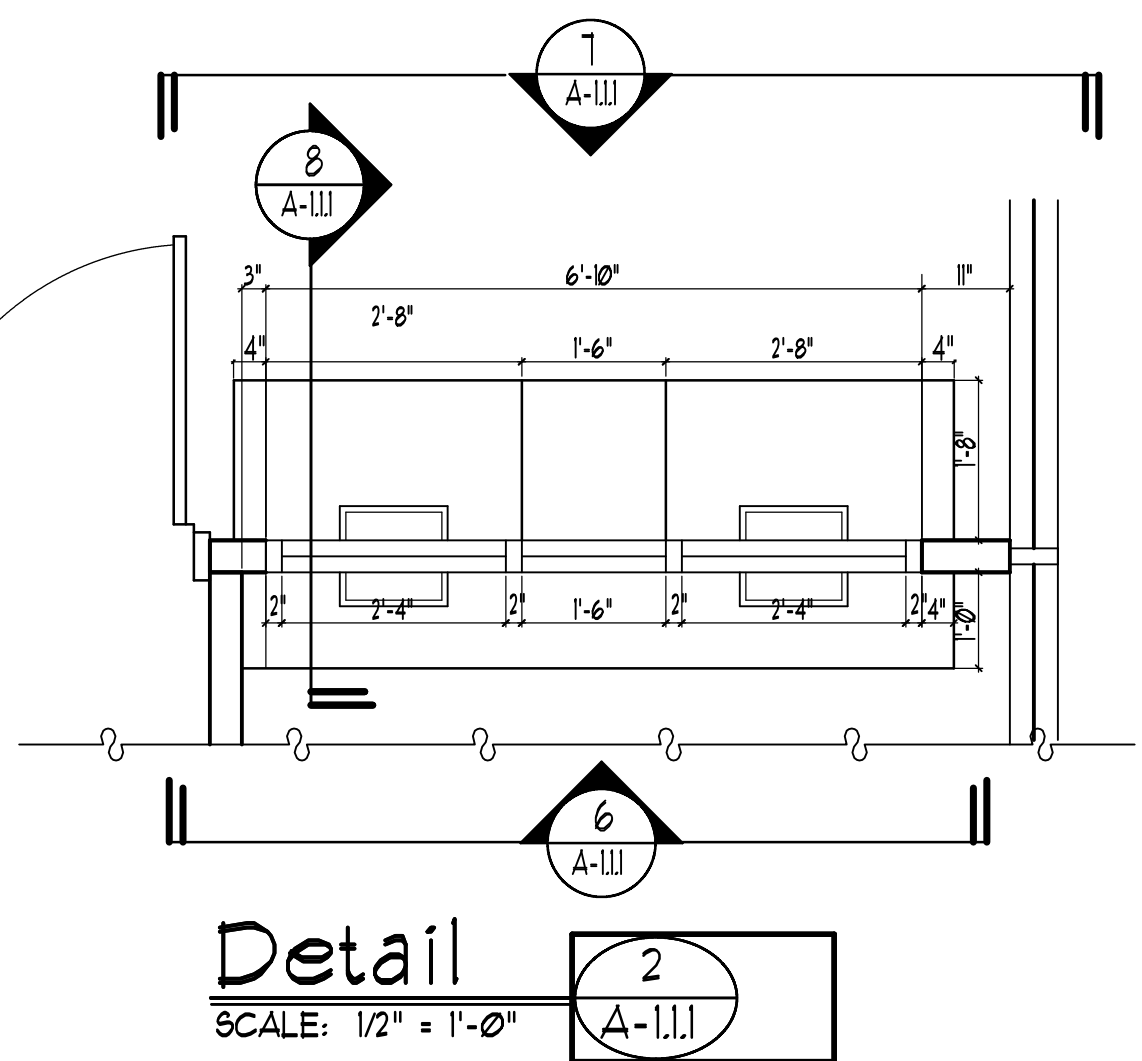
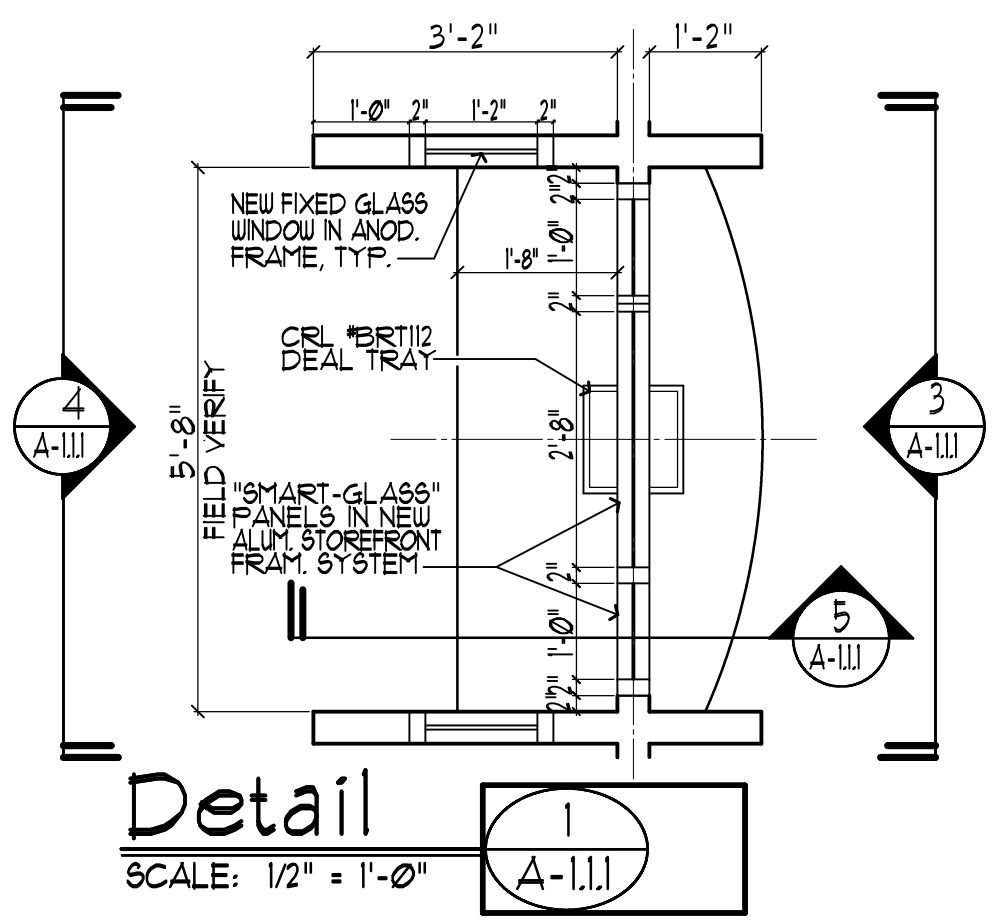


Partial Floor Plan

SCALE: 1/4" = 1'-0"

- Legend:**
- EXISTING DOOR/WINDOWS TO REMAIN
 - EXISTING CONSTRUCTION TO REMAIN
 - EXISTING CONSTRUCTION TO BE REMOVED

INTERIOR WALL CONSTRUCTION:
 3/4" x 1 1/2" 20 ga. METAL STUDS @ 16" O.C.
 W/ 5/8" GYPSUM DRYWALL BOTH SIDES



PRELIMINARY 11 Nov. '16

STEPHEN R. FOLLER ARCHITECTS, INC. 106
 141 COURT STREET, STE. 200 CLEARWATER, FL 33764 (771) 443-2021
 STATE OF FLORIDA ARCHITECTURAL LICENSE NUMBER: AR-0005441
 CERTIFICATE OF CORPORATE AUTHORIZATION NUMBER: IC000665

FOWLER ASSOCIATES ARCHITECTS, INC.

BY	
REVISION	
NO.	
DATE	
DRAWN	SR
DATE	

Floor Plan & Details = Phase 1

Lobby & Customer Service Remodeling

Ground Floor MSB
 100 S. Myle Ave
 Clearwater, Florida 33756

PROJECT NO. 16-218

SHEET NO. A-1.1.1