

HEAVY DUTY COMMERCIAL GRADE ENCLOSED TRAILERS

8.5 WIDE TA SERIES

AVAILABLE STD LENGTHS 16' - 32' AVAILABLE GVWR 7,000# - 14,000#

Texas Trailers

Gainesville, Florida • WWW.TexasTrailersFL.com • 352-378-4756



WHY BUY A TEXAS TRAILER? OUR STANDARD OPTIONS!

- * 16" O.C. CROSSMEMBERS
- * 16" O.C. SIDEWALL UPRIGHTS
- * 1" X 1 1/2" TUBING ROOF SUPPORTS
- * 0.030 ALUMINUM SIDING
- * SEMI-SCREWLESS EXTERIOR
- * 3/4" STABLE DECK FLOORING
- * 3/8" STABLE DECK WALLS
- * 11GA 6" STEEL TUBING MAIN FRAME
- * 24" V-NOSE W/ 24" ATP STONE GUARD
- * 3,500# LEAF SPRING DROP BRAKE AXLES
- * RADIAL TIRES
- * HD SPRAY LINED REAR HOOP & TONGUE
- * 48" SIDE DOOR
- * WIDE ENTRY REAR RAMP DOOR W/
FOLDING RAMP EXTENSION
- * AUTOMATIC INTERIOR LIGHT W/ BATTERY
- * COOL LINER SEALING LINER
- * HD ALUMINUM TREAD PLATE FENDERS
- * EASY ENTRY DOVETAIL

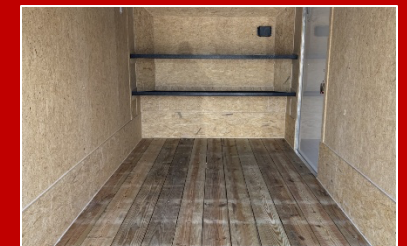
CUSTOM INTERIOR OPTIONS AVAILABLE



COMPLETE CUSTOM TRAILER PACKAGES AVAILABLE



LANDSCAPE OPTIONS



INDUSTRY LEADING 3 YEAR STRUCTURAL WARRANTY



"WE'RE BEHIND YOU ALL THE WAY"



8.5' WIDE TANDEM AXLE ENCLOSED TRAILER MODELS AND SPECIFICATIONS

| MODEL | TX8.5X16TA2 | TX8.5X16TA3 | TX8.5X18TA2 | TX8.5X18TA3 | TX8.5X20TA2 | TX8.5X20TA3 | TX8.5X24TA3 | TX8.5X24TA5 | TX8.5X28TA3 | TX8.5X28TA5 | TX8.5X32TA5 |
|--------------------|--------------|--------------|--------------|--------------|--------------|--------------|--------------|-------------|-------------|-------------|-------------|
| GVWR | 7000# | 9990# | 7000# | 9990# | 7000# | 9990# | 9990# | 14000# | 9990# | 14000# | 14000# |
| WEIGHT | 3240# | 3320# | 3490# | 3570# | 3720# | 3820# | 4000# | 4500# | 4980# | 5180# | 5800# |
| CARGO CAPACITY | 3760# | 6670# | 3510# | 6420# | 3280# | 6170# | 5990# | 9500# | 5010# | 8820# | |
| INTERIOR LENGTH | 189" | 189" | 213" | 213" | 237" | 237" | 285" | 285" | 333" | 333" | 381" |
| INTERIOR WIDTH | 95" | 95" | 95" | 95" | 95" | 95" | 95" | 95" | 95" | 95" | 95" |
| INTERIOR HEIGHT | 78" | 78" | 78" | 78" | 78" | 78" | 78" | 78" | 78" | 78" | 78" |
| REAR DOOR STYLE | RAMP | RAMP | RAMP | RAMP | RAMP | RAMP | RAMP | RAMP | RAMP | RAMP | RAMP |
| REAR DOOR WIDTH | 93.5" | 93.5" | 93.5" | 93.5" | 93.5" | 93.5" | 93.5" | 93.5" | 93.5" | 93.5" | 93.5" |
| REAR DOOR HEIGHT | 75" | 75" | 75" | 75" | 75" | 75" | 75" | 75" | 75" | 75" | 75" |
| SIDE DOOR WIDTH | 48" | 48" | 48" | 48" | 48" | 48" | 48" | 48" | 48" | 48" | 48" |
| COUPLER SIZE | 2 5/16" | 2 5/16" | 2 5/16" | 2 5/16" | 2 5/16" | 2 5/16" | 2 5/16" | 2 5/16" | 2 5/16" | 2 5/16" | 2 5/16" |
| SUSPENSION | LEAF SPRING | LEAF SPRING | LEAF SPRING | LEAF SPRING | LEAF SPRING | LEAF SPRING | LEAF SPRING | LEAF SPRING | LEAF SPRING | LEAF SPRING | LEAF SPRING |
| BRAKES | ELECTRIC | ELECTRIC | ELECTRIC | ELECTRIC | ELECTRIC | ELECTRIC | ELECTRIC | ELECTRIC | ELECTRIC | ELECTRIC | ELECTRIC |
| TIRE SIZE | ST205/75R15 | ST225/75R15 | ST205/75R15 | ST225/75R15 | ST205/75R15 | ST225/75R15 | ST225/75R15 | ST235/80R16 | ST225/75R15 | ST235/80R16 | ST235/80R16 |
| ALUMINUM SKIN | 0.030 | 0.030 | 0.030 | 0.030 | 0.030 | 0.030 | 0.030 | 0.030 | 0.030 | 0.030 | 0.030 |
| FRAME | 11GA 6" TUBE | 11GA 6" TUBE | 11GA 6" TUBE | 11GA 6" TUBE | 11GA 6" TUBE | 11GA 6" TUBE | 11GA 6" TUBE | 1/4 wall 6" | 1/4 wall 6" | 1/4 wall 6" | 1/4 wall 6" |
| TONGUE LENGTH | 60" | 60" | 60" | 60" | 60" | 60" | 60" | 60" | 60" | 60" | 60" |
| FLOOR SPACING | 16"O.C. | 16"O.C. | 16"O.C. | 16"O.C. | 16"O.C. | 16"O.C. | 16"O.C. | 16"O.C. | 16"O.C. | 16"O.C. | 16"O.C. |
| WALL SPACING | 16"O.C. | 16"O.C. | 16"O.C. | 16"O.C. | 16"O.C. | 16"O.C. | 16"O.C. | 16"O.C. | 16"O.C. | 16"O.C. | 16"O.C. |
| FLOOR (STABLEDECK) | 3/4" | 3/4" | 3/4" | 3/4" | 3/4" | 3/4" | 3/4" | 3/4" | 3/4" | 3/4" | 3/4" |
| WALL (STABLEDECK) | 3/8" | 3/8" | 3/8" | 3/8" | 3/8" | 3/8" | 3/8" | 3/8" | 3/8" | 3/8" | 3/8" |

POPULAR OPTIONS

- | | |
|------------------------|------------------------------------|
| * SPARE TIRE AND WHEEL | * 5,000# D-RINGS RECESSED IN FLOOR |
| * BLACKOUT PACKAGE | * E-TRACK |
| * SCREWLESS SKIN | * REAR DOUBLE DOORS |
| * EXTRA HEIGHT | * POLYCORE SKIN |
| * AXLE UPGRADE | * INSULATION |
| * INTERIOR FINISHES | * LADDER RACKS |
| * FLAT FRONT | * INTERIOR SHELIVING |

CUSTOM OPTIONS AVAILABLE UPON REQUEST