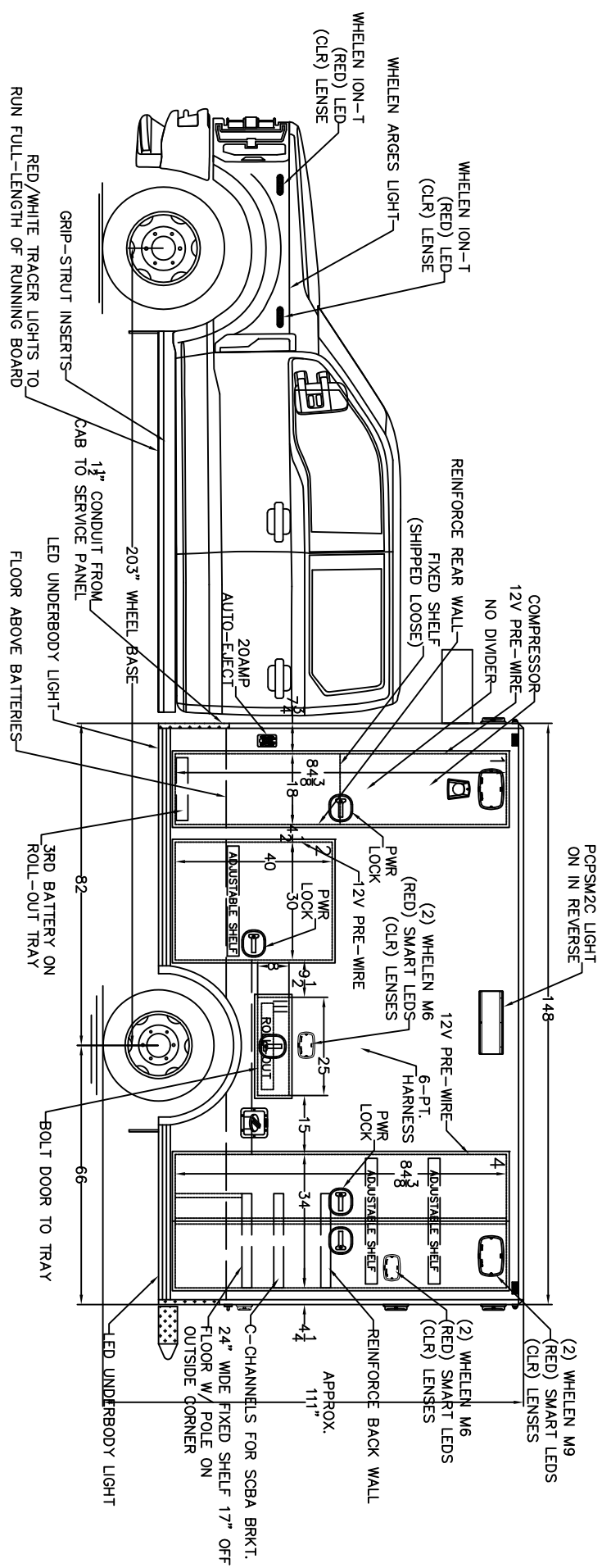


NOTES: THIS DRAWING IS NOT TO SCALE  
CHARACTERISTICS AND DIMENSIONS OF FINISHED PRODUCT MAY VARY.

- NOTES:
- 1.) COMPARTMENT DIMENSIONS REFLECT OPENING CLEARANCE.
  - 2.) APPROXIMATE COMPARTMENT DEPTH=20 1/2"DEEP.
  - 3.) MODULE DIMENSIONS=148"L x 96"W x 93"H
  - 4.) INTERIOR MODULE HEAD ROOM=72"H.
  - 5.) ALL 9x7 LIGHTS TO BE WHEELS M9 SERIES LIGHTS. CHROME FLANGES.
  - 6.) DOUBLE STAINLESS THRESHOLDS.
  - 7.) DRY-DECK IN ALL COMPARTMENTS.
  - 8.) SMOOTH ALUMINUM KICKPLATES.
  - 9.) TECHNIQUE LED STRIP-LIGHTS IN ALL COMPARTMENTS.

3			
2			
1	PRODUCTION DRAFT	04-23-26	SAH
Rev #	Revision Description	Date	Rev'd App'vd

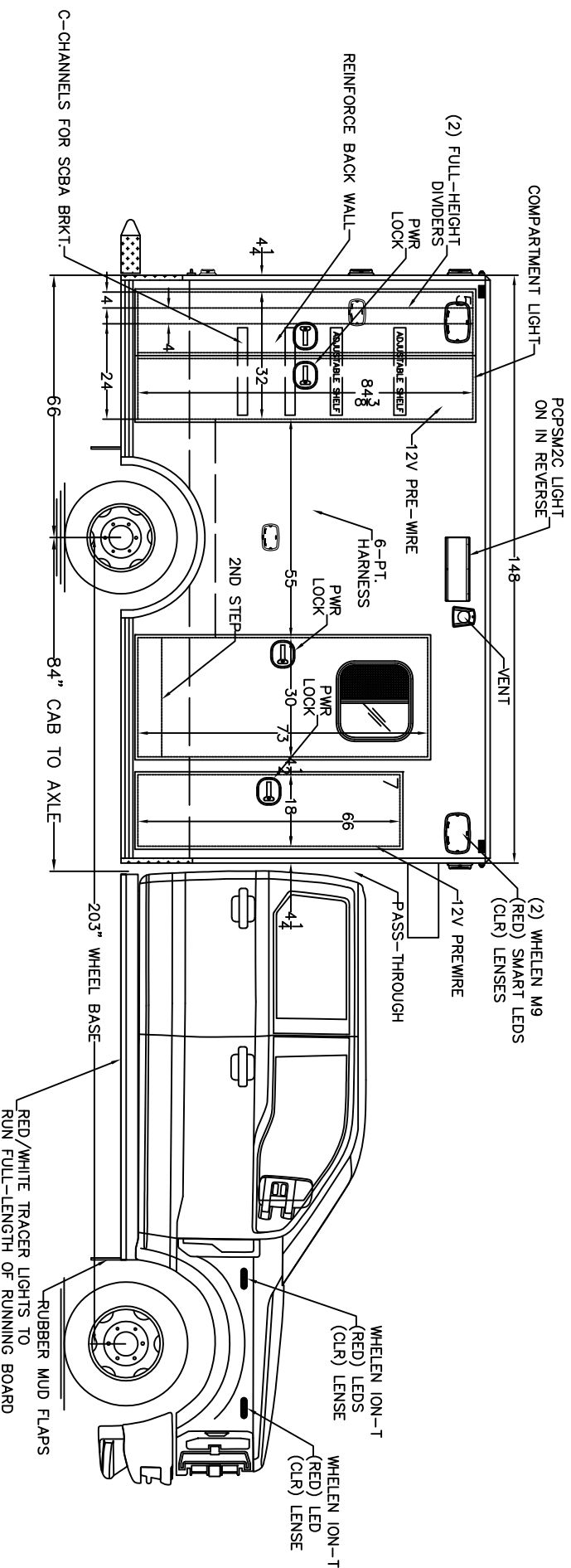
Stock/Job#:	J3865	Drawing#	J3865-100A	Cust. App'v/Date#		Dea'r App'v/Date:	
Osage Dealer:	TEN-8 FIRE	End Customer:	CLEARWATER	Drawn By:	S.A.H.	Date:	04-23-26
<p><b>NOTICE</b></p> <p>This drawing and/or the information hereon is the exclusive property of Osage Ambulances and shall not be reproduced, used or disclosed without the authorized written consent of Osage Ambulances.</p>				<p><b>Osage Ambulances</b></p> <p>EXTERIOR LAYOUT, FRONT/REAR TYPE-1 WARRIOR, CREW CAB</p>			
				Scale:	NOT TO SCALE		
				Revision#	1		



- NOTES: THIS DRAWING IS NOT TO SCALE. CHARACTERISTICS AND DIMENSIONS OF FINISHED PRODUCT MAY VARY.
- NOTES:
- 1.) COMPARTMENT DIMENSIONS REFLECT OPENING CLEARANCE.
  - 2.) APPROXIMATE COMPARTMENT DEPTH=20 1/2" DEEP.
  - 3.) MODULE DIMENSIONS=148" L x 96" W x 93" H
  - 4.) INTERIOR MODULE HEAD ROOM=72"H.
  - 5.) ALL 9x7 LIGHTS TO BE WHELEN M9 SERIES LIGHTS. CHROME FLANGES.
  - 6.) DOUBLE STAINLESS THRESHOLDS.
  - 7.) DRY-DECK IN ALL COMPARTMENTS.
  - 8.) SMOOTH ALUMINUM KICKPLATES.
  - 9.) TECHNIQUE LED STRIP-LIGHTS IN ALL COMPARTMENTS.

Rev.#	Revision Description	Date	Rev'd App'vd
1	PRODUCTION DRAFT	04-23-26	SAH
2			
3			

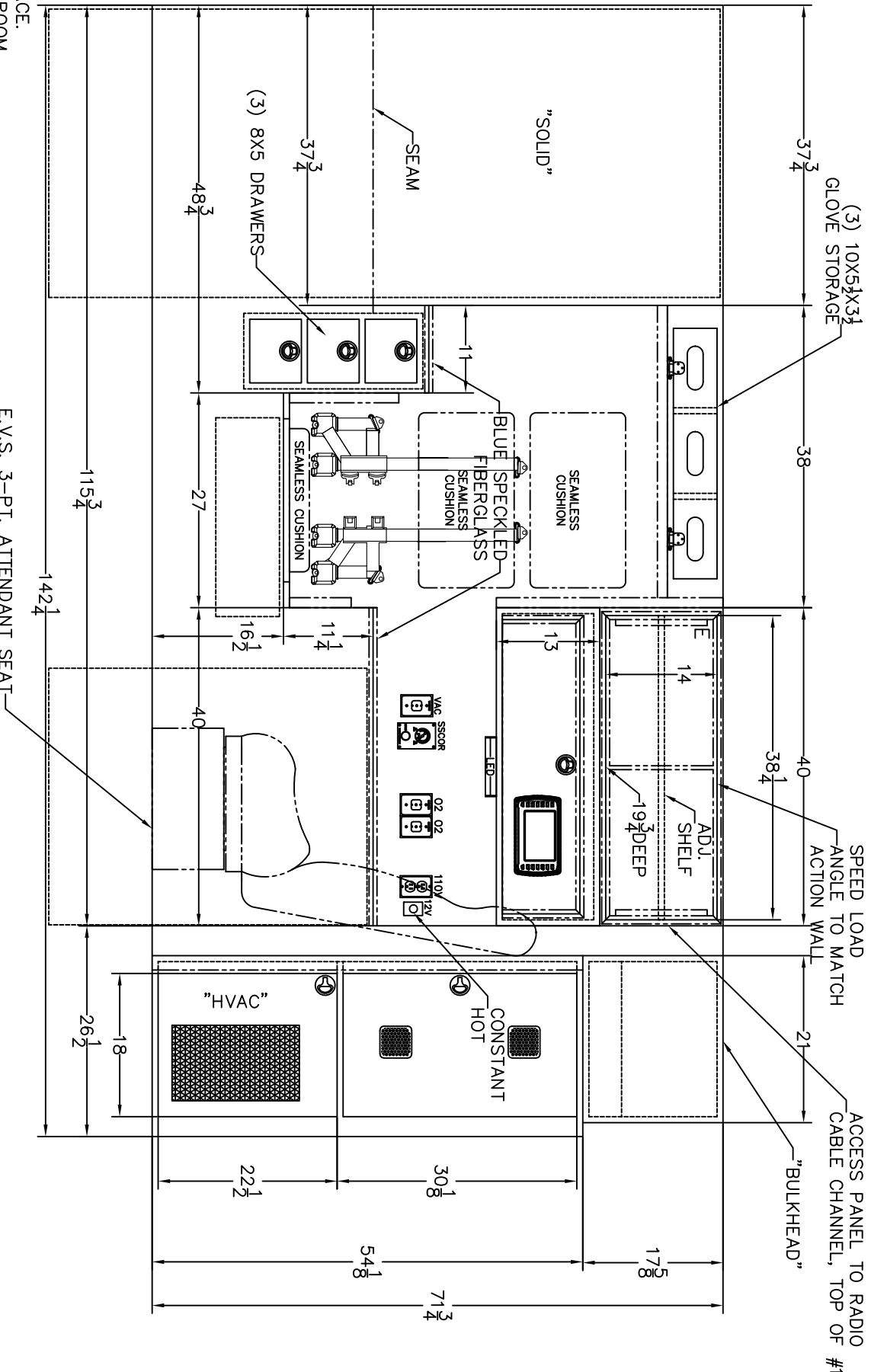
Stock/Job#:	J3865	Drawing#:	J3865-100B	Cust. App'v/Date#:		Dea'r App'v/Date:		
Osage Dealer:	TEN-8 FIRE	Drawn By:	S.A.H.	Date:	04-23-26	Scale:	NOT TO SCALE	
End Customer:	CLEARWATER	Drawing Description:	EXTERIOR LAYOUT, STREETSIDE TYPE-1 WARRIOR, CREW CAB				Revision#	1
<p><b>Osage Ambulances</b></p> <p>NOTICE</p> <p>This drawing and/or the information hereon is the exclusive property of Osage Ambulances and shall not be reproduced, used or disclosed without the authorized written consent of Osage Ambulances.</p>								



- NOTES: THIS DRAWING IS NOT TO SCALE  
CHARACTERISTICS AND DIMENSIONS OF FINISHED PRODUCT MAY VARY.
- NOTES:
- 1.) COMPARTMENT DIMENSIONS REFLECT OPENING CLEARANCE.
  - 2.) APPROXIMATE COMPARTMENT DEPTH=20 1/2"DEEP.
  - 3.) MODULE DIMENSIONS=148"L x 96"W x 93"H
  - 4.) INTERIOR MODULE HEAD ROOM=72"H.
  - 5.) ALL 9x7 LIGHTS TO BE WHELEN M9 SERIES LIGHTS. CHROME FLANGES.
  - 6.) DOUBLE STAINLESS THRESHOLDS.
  - 7.) DRY-DECK IN ALL COMPARTMENTS.
  - 8.) SMOOTH ALUMINUM KICKPLATES.
  - 9.) TECHNIQUE LED STRIP-LIGHTS IN ALL COMPARTMENTS.

3				
2				
1	PRODUCTION DRAFT	04-23-26	SAH	
Rev.#	Revision Description	Date	Rev'd App'vd	

Stock/Job#:	J3865	Drawing#	J3865-100C	Cust. App'v/Date#		Dea'r App'v/Date:	
Osage Dealer:	TEN-8 FIRE	<p style="text-align: center;"><b>Osage Ambulances</b></p>					
End Customer:	CLEARWATER						
<p style="text-align: center;"><b>NOTICE</b></p> <p>This drawing and/or the information hereon is the exclusive property of Osage Ambulances and shall not be reproduced, used or disclosed without the authorized written consent of Osage Ambulances.</p>		Drawn By:	S.A.H.	Date:	04-23-26	Scale:	NOT TO SCALE
<p style="text-align: center;"><b>EXTERIOR LAYOUT, CURBSIDE TYPE-1 WARRIOR, CREW CAB</b></p>		Drawing Description:					
Revision#	1						



- NOTES:
- 1.) GRAY GLACE.
  - 2.) 72" HEADROOM.
  - 3.) S.S. SOUTHCOS.

NOTES: THIS DRAWING IS NOT TO SCALE.  
 CHARACTERISTICS AND DIMENSIONS OF FINISHED PRODUCT MAY VARY.

NOTES: CABINET DEPTHS REPRESENT DIMENSION FROM INSIDE REAR TO FRONT FACE OF CABINETS, WITHOUT TRIM. ACTUAL WORKING DEPTH WILL BE LESS THAN DIMENSION SHOWN UNLESS OTHERWISE SPECIFIED.

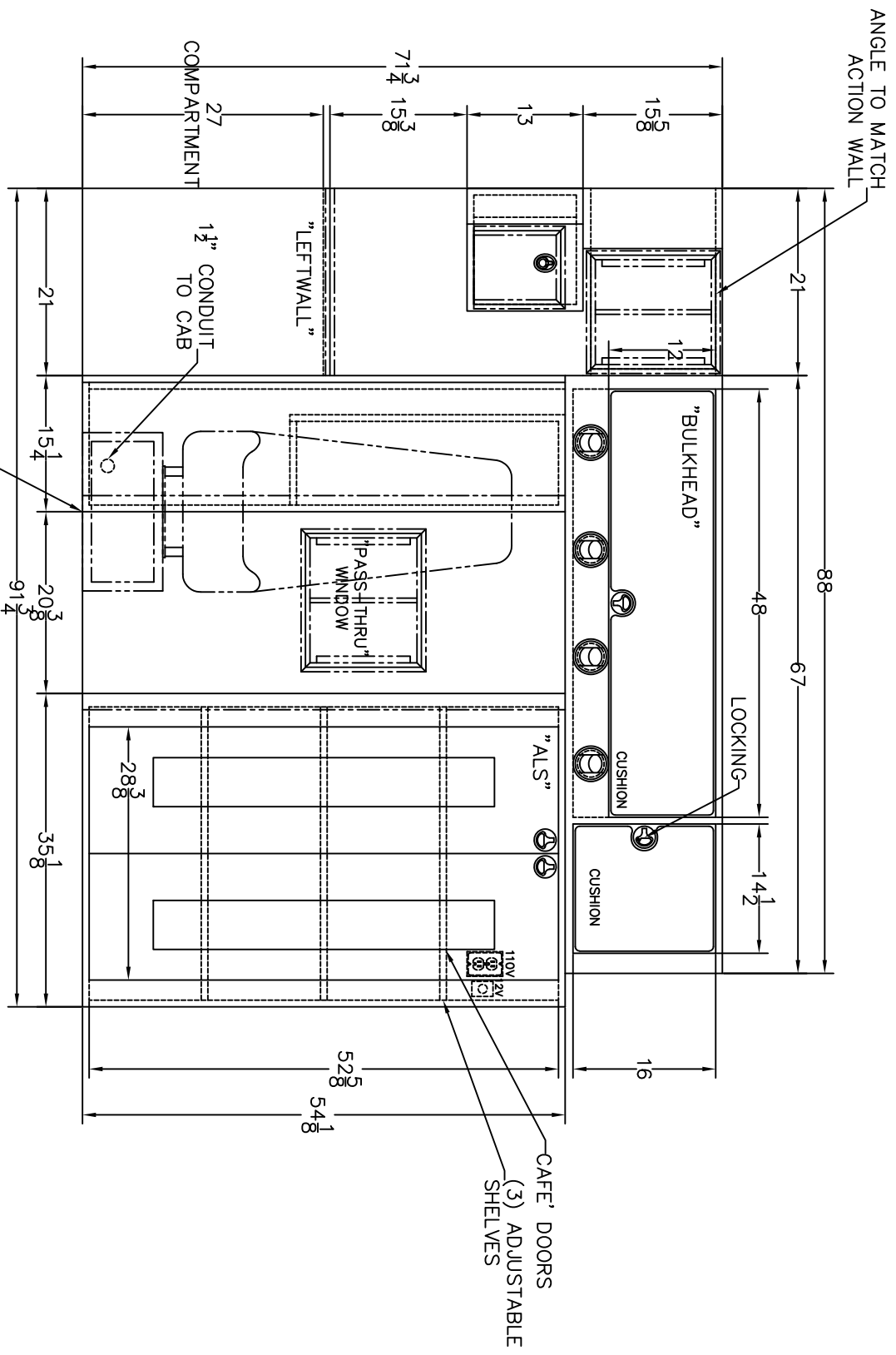
Rev #	Revision Description	Date	Rev'd App'vd
1	PRODUCTION DRAFT	04-23-26	SAH
2			
3			

Stock/Job#:	J3865	Drawing#:	J3865-101	Cust. App'v/Date#:		Deal'r App'v/Date:	
Osage Dealer:	TEN-8 FIRE						
End Customer:	CLEARWATER						

<p><b>NOTICE</b></p> <p>This drawing and/or the information hereon is the exclusive property of Osage Ambulances and shall not be reproduced, used or disclosed without the authorized written consent of Osage Ambulances.</p>		<p>Drawn By: S.A.H.</p> <p>Date: 04-23-26</p> <p>Scale: NOT TO SCALE</p>
<p>Osage Ambulances</p> <p>STREETSIDE INTERIOR</p> <p>TYPE-1 WARRIOR, CREW CAB</p>		<p>Revision#</p> <p>1</p>

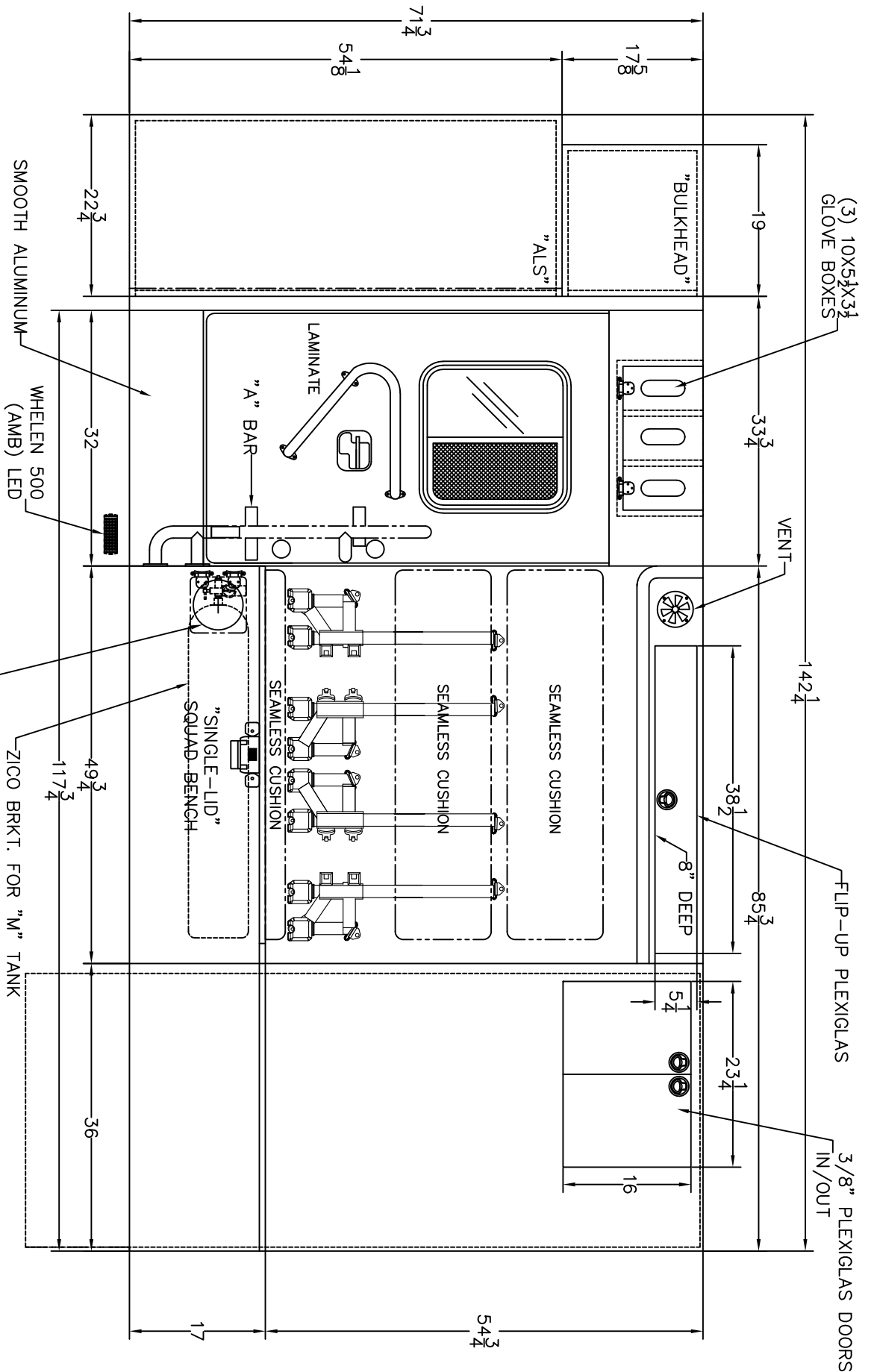


E.V.S. 3-PT. ATTENDANT SEAT

NOTES: THIS DRAWING IS NOT TO SCALE.  
 CHARACTERISTICS AND DIMENSIONS OF FINISHED PRODUCT MAY VARY.  
 NOTES: CABINET DEPTHS REPRESENT DIMENSION FROM  
 INSIDE REAR TO FRONT FACE OF CABINETS, WITHOUT TRIM.  
 ACTUAL WORKING DEPTH WILL BE LESS THAN DIMENSION  
 SHOWN UNLESS OTHERWISE SPECIFIED.

3		
2		
1	PRODUCTION DRAFT	04-23-26 SAH
Rev.#	Revision Description	Date Rev'd App'vd

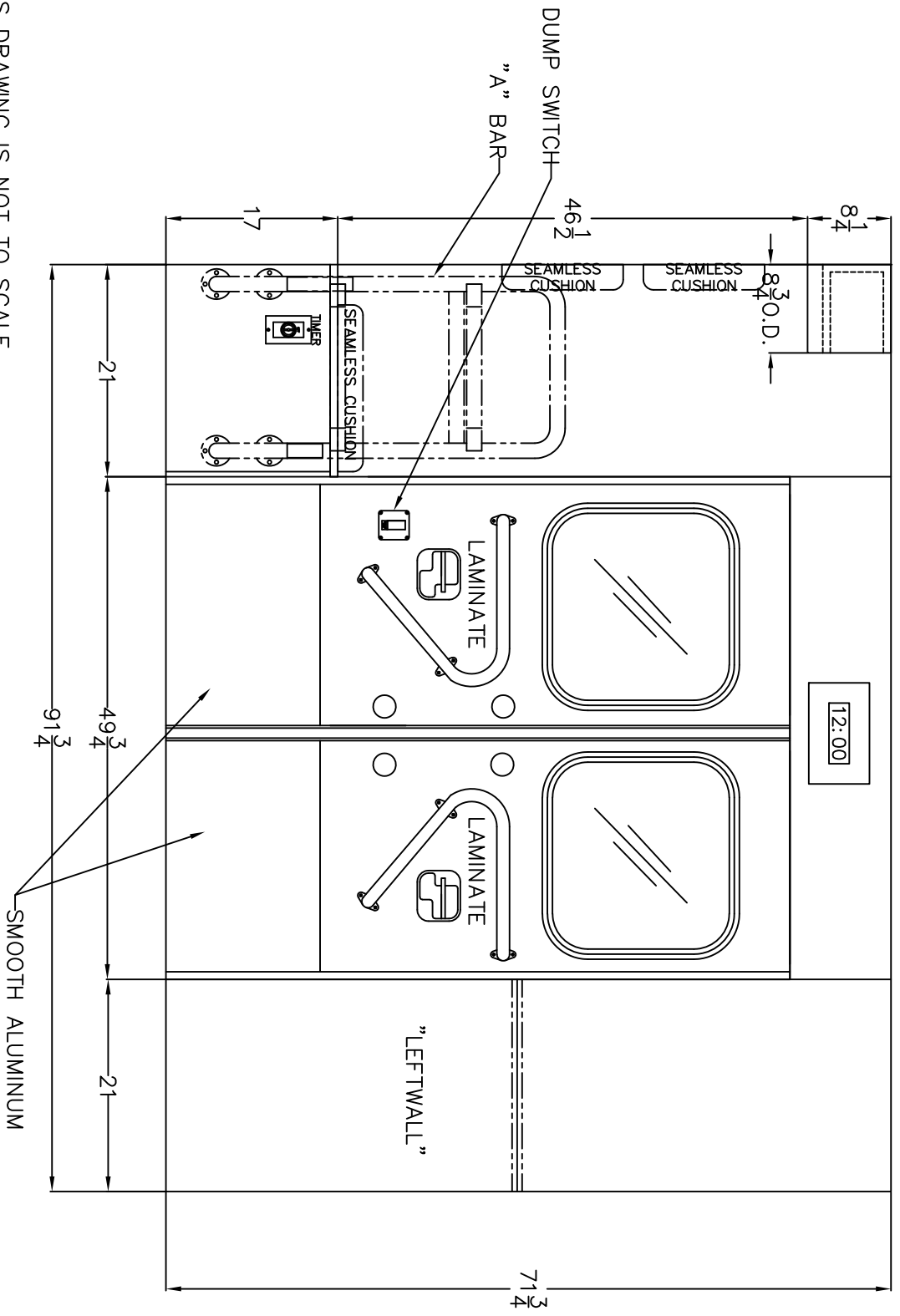
Stock/Job#:	J3865	Drawing#	J3865-102	Cust. App'v/Date#		Deal'r App'v/Date:	
Osage Dealer:	TEN-8 FIRE						
End Customer:	CLEARWATER						
<b>NOTICE</b>							
This drawing and/or the information hereon is the exclusive property of Osage Ambulances and shall not be reproduced, used or disclosed without the authorized written consent of Osage Ambulances.							
Drawn By:	S.A.H.	Date:	04-23-26	Scale:	NOT TO SCALE		
Drawing Description:	FORWARD INTERIOR TYPE-1 WARRIOR, CREW CAB						
Revision#	1						



NOTES: THIS DRAWING IS NOT TO SCALE.  
 CHARACTERISTICS AND DIMENSIONS OF FINISHED PRODUCT MAY VARY.  
 NOTES: CABINET DEPTHS REPRESENT DIMENSION FROM INSIDE REAR TO FRONT FACE OF CABINETS, WITHOUT TRIM. ACTUAL WORKING DEPTH WILL BE LESS THAN DIMENSION SHOWN UNLESS OTHERWISE SPECIFIED.

3			
2			
1	PRODUCTION DRAFT	04-23-26	SAH
Rev.#	Revision Description	Date	Rev'd App'vd

Stock/Job#:	J3865	Drawing#	J3865-103	Cust. App'v/Date#		Deal'r App'v/Date:		
Osage Dealer:	TEN-8 FIRE	Drawn By:	S.A.H.	Date:	04-23-26	Scale:	NOT TO SCALE	
End Customer:	CLEARWATER	Drawing Description:	CURBSIDE INTERIOR TYPE-1 WARRIOR, CREW CAB				Revision#	1
<p><b>NOTICE</b></p> <p>This drawing and/or the information hereon is the exclusive property of Osage Ambulances and shall not be reproduced, used or disclosed without the authorized written consent of Osage Ambulances.</p>								

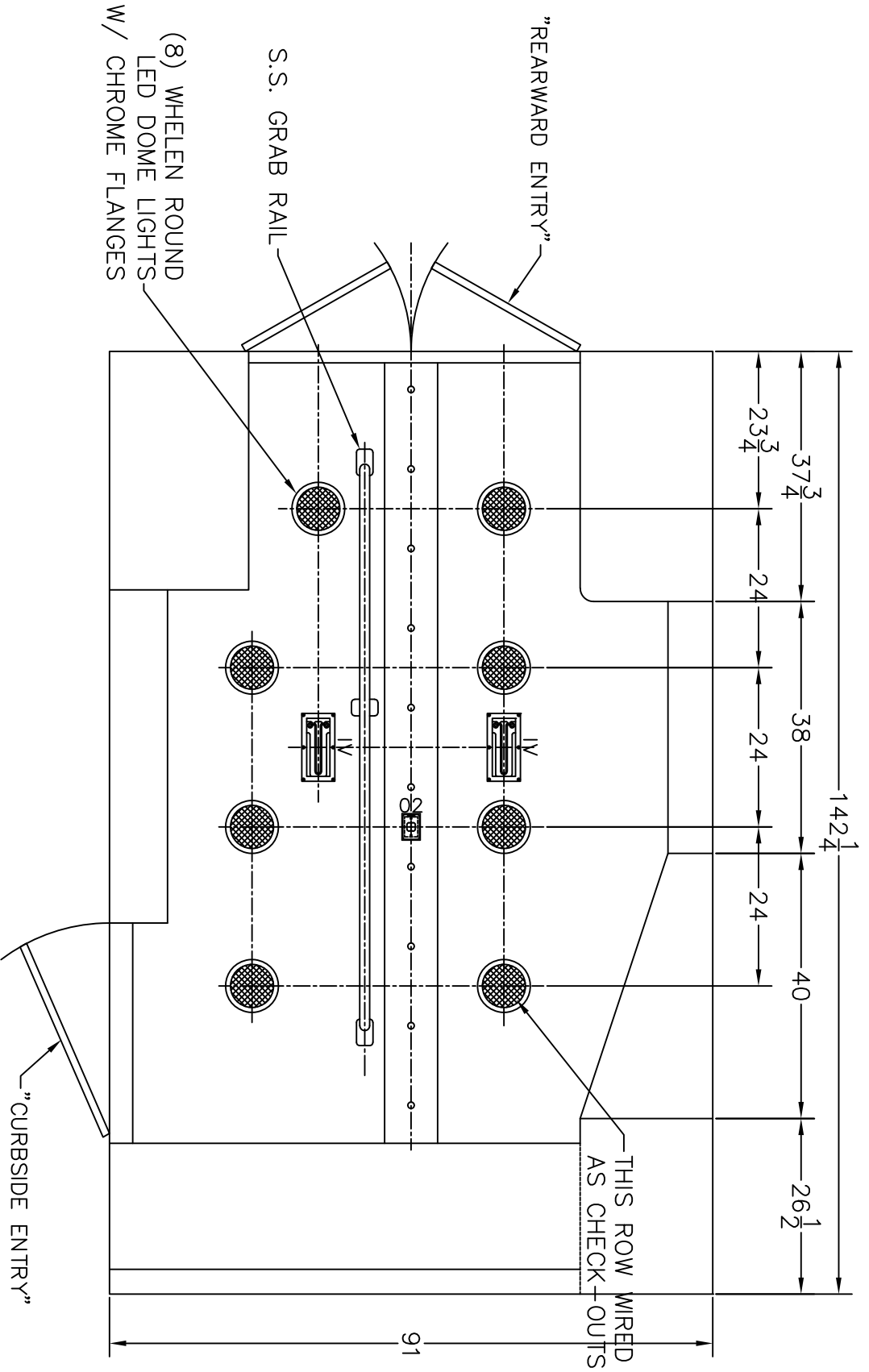


NOTES: THIS DRAWING IS NOT TO SCALE.  
 CHARACTERISTICS AND DIMENSIONS OF FINISHED PRODUCT MAY VARY.  
 NOTES: CABINET DEPTHS REPRESENT DIMENSION FROM INSIDE REAR TO FRONT FACE OF CABINETS, WITHOUT TRIM. ACTUAL WORKING DEPTH WILL BE LESS THAN DIMENSION SHOWN UNLESS OTHERWISE SPECIFIED.

Rev. #	Revision Description	Date	Rev'd App'vd
3			
2	PRODUCTION DRAFT	04-23-26	SAH
1			

Stock/Job #:	J3865	Drawing#	J3865-104	Cust. App'v/Date#		Deal'r App'v/Date:	
Osage Dealer:	TEN-8 FIRE						
End Customer:	CLEARWATER						
<b>NOTICE</b>							
This drawing and/or the information hereon is the exclusive property of Osage Ambulances and shall not be reproduced, used or disclosed without the authorized written consent of Osage Ambulances.							
Drawn By:	S.A.H.	Date:	04-23-26	Scale:	NOT TO SCALE		
Drawing Description:	REARWARD INTERIOR TYPE-1 WARRIOR, CREW CAB						
Revision #	1						

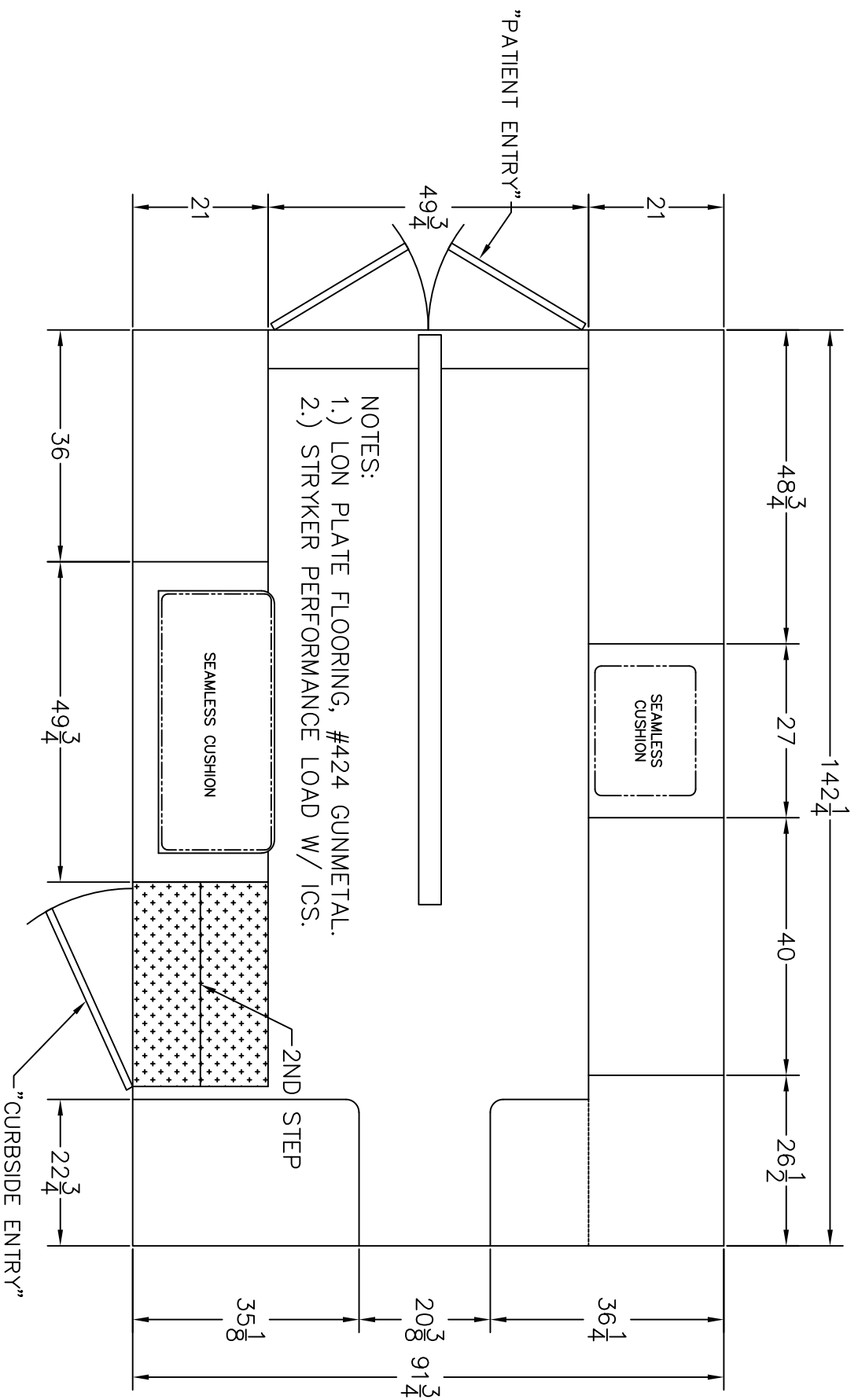
Osage Ambulances



NOTES: THIS DRAWING IS NOT TO SCALE.  
 CHARACTERISTICS AND DIMENSIONS OF FINISHED  
 PRODUCT MAY VARY.

3			
2			
1	PRODUCTION DRAFT	04-23-26	SAH
Rev.#	Revision Description	Date	Rev'd App'vd

Stock/Job#:	J3865	Drawing#:	J3865-105	Cust. App'v/Date#:		Deal'r App'v/Date:	
Osage Dealer:	TEN-8 FIRE						
End Customer:	CLEARWATER						
<b>NOTICE</b>							
This drawing and/or the information hereon is the exclusive property of Osage Ambulances and shall not be reproduced, used or disclosed without the authorized written consent of Osage Ambulances.							
Drawn By:	S.A.H.	Date:	04-23-26	Scale:	NOT TO SCALE		
Drawing Description:	Osage Ambulances CEILING LAYOUT TYPE-1 WARRIOR, CREW CAB						
Revision#	1						



NOTES:  
 1.) LON PLATE FLOORING, #424 GUNMETAL.  
 2.) STRYKER PERFORMANCE LOAD W/ ICS.

NOTES: THIS DRAWING IS NOT TO SCALE.  
 CHARACTERISTICS AND DIMENSIONS OF FINISHED  
 PRODUCT MAY VARY.

3			
2			
1	PRODUCTION DRAFT	04-23-26	SAH
Rev.#	Revision Description	Date	Rev'd App'vd

Stock/Job#:	J3865	Drawing#	J3865-106	Cust. App'v/Date#		Deal'r App'v/Date:	
Osage Dealer:	TEN-8 FIRE						
End Customer:	CLEARWATER						
<b>NOTICE</b>		Drawn By:	S.A.H.	Date:	04-23-26	Scale:	NOT TO SCALE
This drawing and/or the information hereon is the exclusive property of Osage Ambulances and shall not be reproduced, used or disclosed without the authorized written consent of Osage Ambulances.		Drawing Description:	FLOOR LAYOUT TYPE-I WARRIOR, CREW CAB				
							Revision#
							1

**Osage Ambulances**