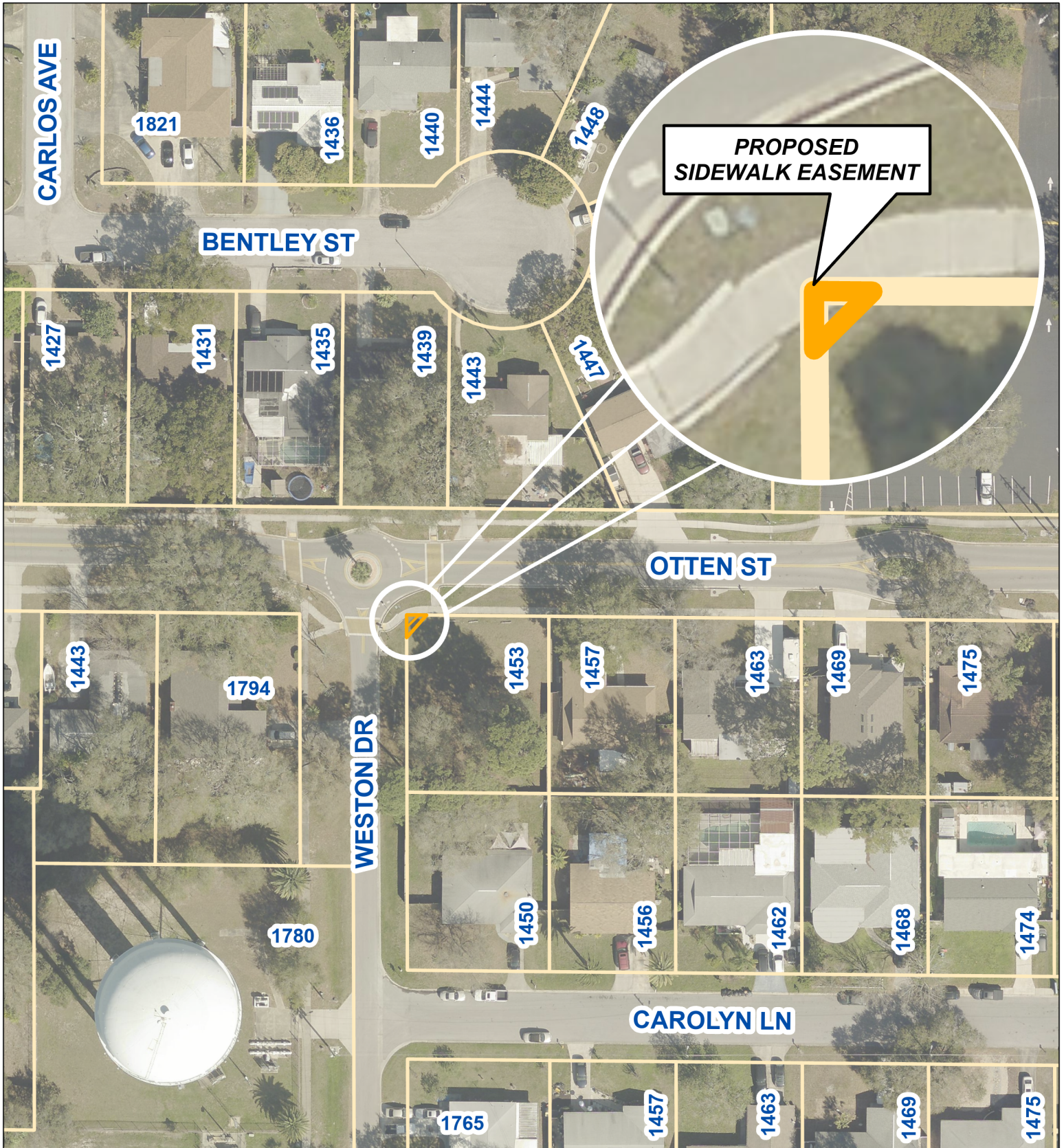
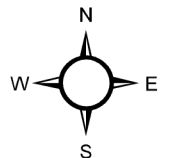


# AERIAL MAP



Prepared by:  
 Department of Public Works - Engineering  
 Geographic Technology Division  
 100 S. Myrtle Ave, Clearwater, FL 33756  
 Ph: (727)562-4750, Fax: (727)526-4755  
 www.MyClearwater.com

## Proposed Sidewalk Easement 1453 Otten St



Scale: N.T.S.

Map Gen By: **KF**

Reviewed By: **TM**

Aerial Flown 2021

Date: **2/23/2023**

Page: 1 of 1