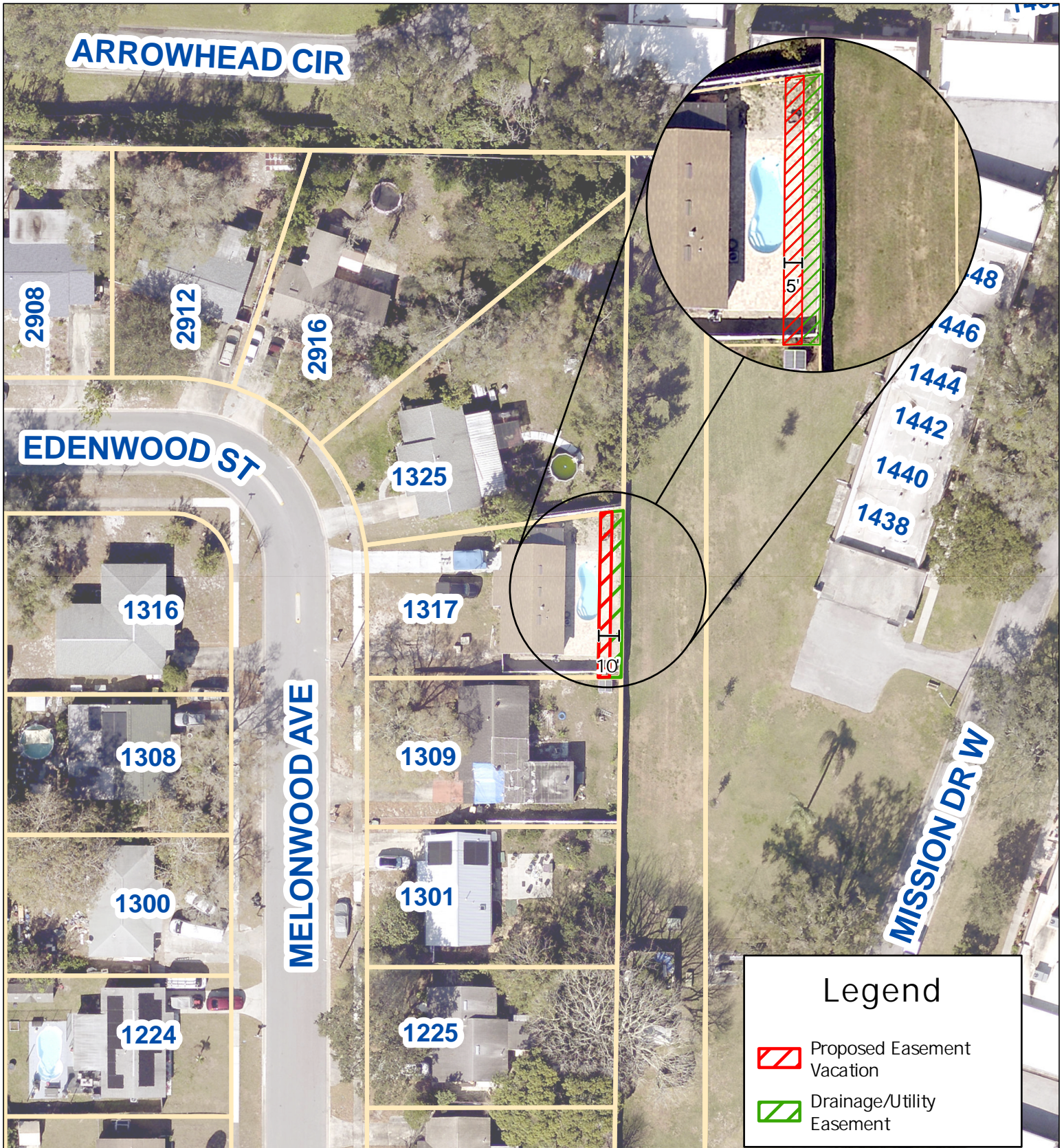




AERIAL MAP



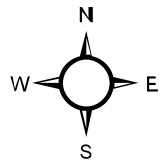
Legend

-  Proposed Easement Vacation
-  Drainage/Utility Easement



Prepared by:
 Department of Public Works - Engineering
 Geographic Technology Division
 100 S. Myrtle Ave. Clearwater, FL 33756
 Ph: (727)562-4750, Fax: (727)526-4755
 www.MyClearwater.com

VAC2024-07
Proposed Drainage/Utility Easement Vacation
1317 Melonwood Ave



Map Gen By: MD

Reviewed By: RK

Aerial Flown 2023

Date: 4/11/2024

Page: 1 of 1

Scale: N.T.S.