

McKay Park Pickleball

Clearwater, FL

Lighting System

Pole/Fixture Summary						
Pole ID	Pole Height	Mtg Height	Fixture Qty	Luminaire Type	Load	Circuit
P1-P2	40'	40'	2	TLC-LED-550	1.08 kW	A
P3-P4	40'	40'	2	TLC-LED-550	1.08 kW	A
		40'	2	TLC-LED-550	1.08 kW	B
P5-P6	40'	40'	2	TLC-LED-550	1.08 kW	B
6			16		8.64 kW	

Circuit Summary			
Circuit	Description	Load	Fixture Qty
A	Pickleball 1-3	4.32 kW	8
B	Pickleball 4-6	4.32 kW	8

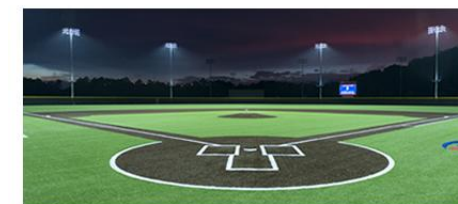
Fixture Type Summary							
Type	Source	Wattage	Lumens	L90	L80	L70	Quantity
TLC-LED-550	LED 5700K - 75 CRI	540W	67,000	>120,000	>120,000	>120,000	16

Single Luminaire Amperage Draw Chart								
Driver Specifications (.90 min power factor)	Line Amperage Per Luminaire (max draw)							
	208 (60)	220 (60)	240 (60)	277 (60)	347 (60)	380 (60)	480 (60)	
Single Phase Voltage	208 (60)	220 (60)	240 (60)	277 (60)	347 (60)	380 (60)	480 (60)	
TLC-LED-550	3.2	3.0	2.8	2.4	1.9	1.8	1.4	

Light Level Summary

Calculation Grid Summary									
Grid Name	Calculation Metric	Illumination					Circuits	Fixture Qty	
		Ave	Min	Max	Max/Min	Ave/Min			
Pickleball 1-3	Horizontal Illuminance	51.26	36	61	1.73	1.44	A	8	
Pickleball 4-6	Horizontal Illuminance	51.06	36	62	1.71	1.41	B	8	

From Hometown to Professional



We Make It Happen.

Not to be reproduced in whole or part without the written consent of Musco Sports Lighting, LLC. ©1981, 2023 Musco Sports Lighting, LLC.

Equipment List For Areas Shown								
Pole				Luminaires				
QTY	LOCATION	SIZE	GRADE ELEVATION	ABOVE GRADE LEVEL	LUMINAIRE TYPE	QTY/POLE	THIS GRID	OTHER GRIDS
2	P1-P2	40'	-	40'	TLC-LED-550	2	2	0
2	P3-P4	40'	-	40'	TLC-LED-550	2/2*	2	2
4	Totals					12	8	4

*Above Grade level relative to the field
 *This structure utilizes a back-to-back mounting configuration

McKay Park Pickleball

Clearwater, FL

Grid Summary	
Name	Pickleball 1-3
Size	90' x 64'
Spacing	10.0' x 10.0'
Height	3.0' above grade

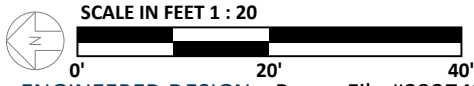
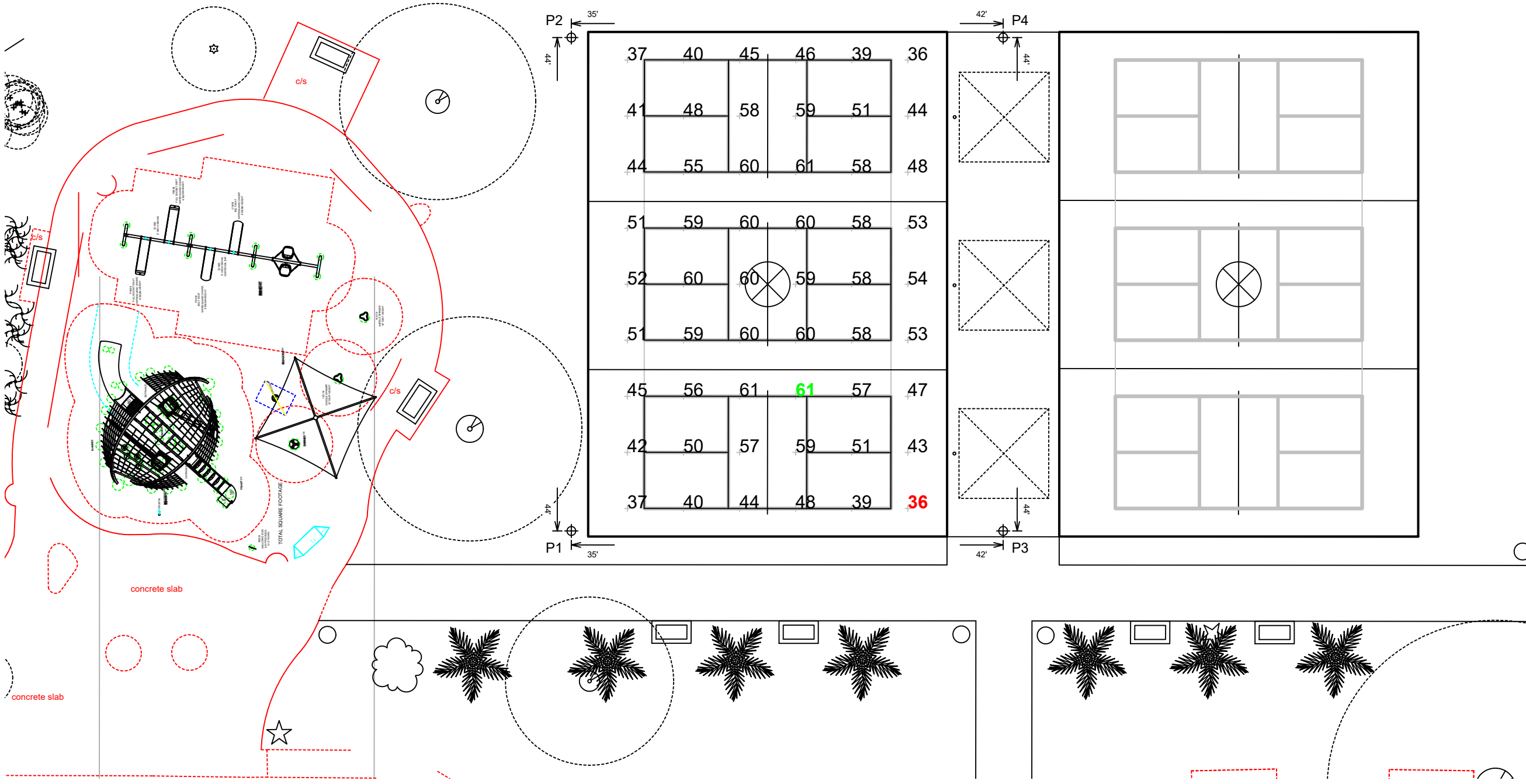
Illumination Summary	
MAINTAINED HORIZONTAL FOOTCANDLES	
Entire Grid	
Guaranteed Average	50
Scan Average	51.26
Maximum	61
Minimum	36
Avg/Min	1.44
Guaranteed Max/Min	2
Max/Min	1.73
UG (adjacent pts)	1.31
CU	0.56
CV	0.16
No. of Points	60
LUMINAIRE INFORMATION	
Applied Circuits	A
No. of Luminaires	8
Total Load	4.32 kW

Guaranteed Performance: The ILLUMINATION described above is guaranteed per your Musco Warranty document and includes a 0.95 dirt depreciation factor.

Field Measurements: Individual field measurements may vary from computer-calculated predictions and should be taken in accordance with IESNA RP-6-15.

Electrical System Requirements: Refer to Amperage Draw Chart and/or the "Musco Control System Summary" for electrical sizing.

Installation Requirements: Results assume ± 3% nominal voltage at line side of the driver and structures located within 3 feet (1m) of design locations.



ENGINEERED DESIGN By: • File #233743A • 08-Mar-24

Pole location(s) ⊕ dimensions are relative to 0,0 reference point(s) ⊗



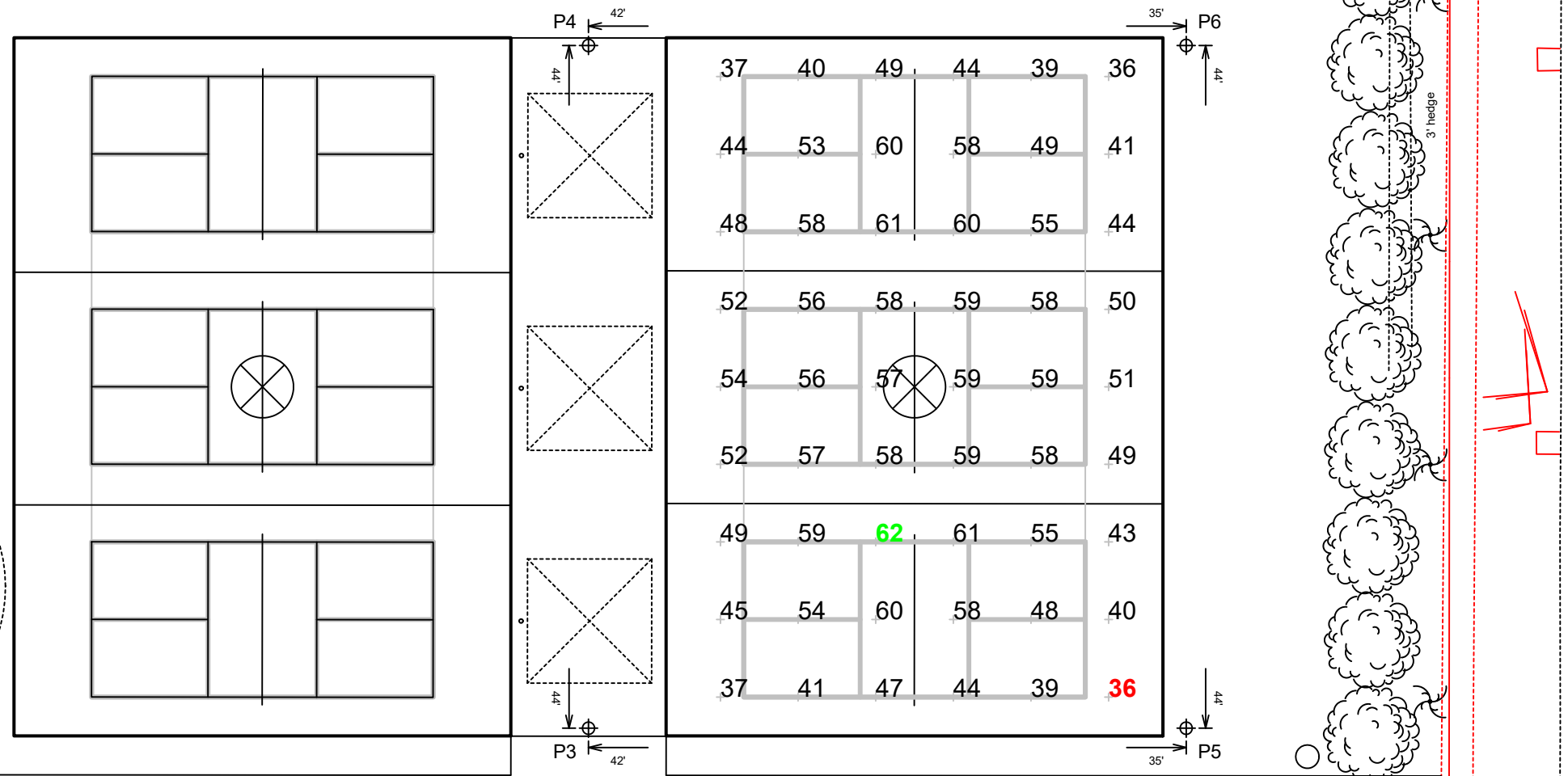
We Make It Happen.

Not to be reproduced in whole or part without the written consent of Musco Sports Lighting, LLC. ©1981, 2023 Musco Sports Lighting, LLC.

ILLUMINATION SUMMARY

Equipment List For Areas Shown								
Pole				Luminaires				
QTY	LOCATION	SIZE	GRADE ELEVATION	ABOVE GRADE LEVEL	LUMINAIRE TYPE	QTY/POLE	THIS GRID	OTHER GRIDS
2	P3-P4	40'	-	40'	TLC-LED-550	2/2*	2	2
2	P5-P6	40'	-	40'	TLC-LED-550	2	2	0
4	Totals					12	8	4

*Above Grade level relative to the field
 *This structure utilizes a back-to-back mounting configuration



McKay Park Pickleball

Clearwater, FL

Grid Summary	
Name	Pickleball 4-6
Size	90' x 64'
Spacing	10.0' x 10.0'
Height	3.0' above grade

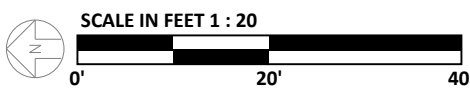
Illumination Summary	
MAINTAINED HORIZONTAL FOOTCANDLES	
	Entire Grid
Guaranteed Average	50
Scan Average	51.06
Maximum	62
Minimum	36
Avg/Min	1.41
Guaranteed Max/Min	2
Max/Min	1.71
UG (adjacent pts)	1.32
CU	0.56
CV	0.16
No. of Points	60
LUMINAIRE INFORMATION	
Applied Circuits	B
No. of Luminaires	8
Total Load	4.32 kW

Guaranteed Performance: The ILLUMINATION described above is guaranteed per your Musco Warranty document and includes a 0.95 dirt depreciation factor.

Field Measurements: Individual field measurements may vary from computer-calculated predictions and should be taken in accordance with IESNA RP-6-15.

Electrical System Requirements: Refer to Amperage Draw Chart and/or the "Musco Control System Summary" for electrical sizing.

Installation Requirements: Results assume ± 3% nominal voltage at line side of the driver and structures located within 3 feet (1m) of design locations.



ENGINEERED DESIGN By: • File #233743A • 08-Mar-24

Pole location(s) ⊕ dimensions are relative to 0,0 reference point(s) ⊗



We Make It Happen.

Not to be reproduced in whole or part without the written consent of Musco Sports Lighting, LLC. ©1981, 2023 Musco Sports Lighting, LLC.

ILLUMINATION SUMMARY

McKay Park Pickleball

Clearwater, FL

Grid Summary	
Name	Spill 75ft Offset
Spacing	30.0' x 10.0'
Height	3.0' above grade

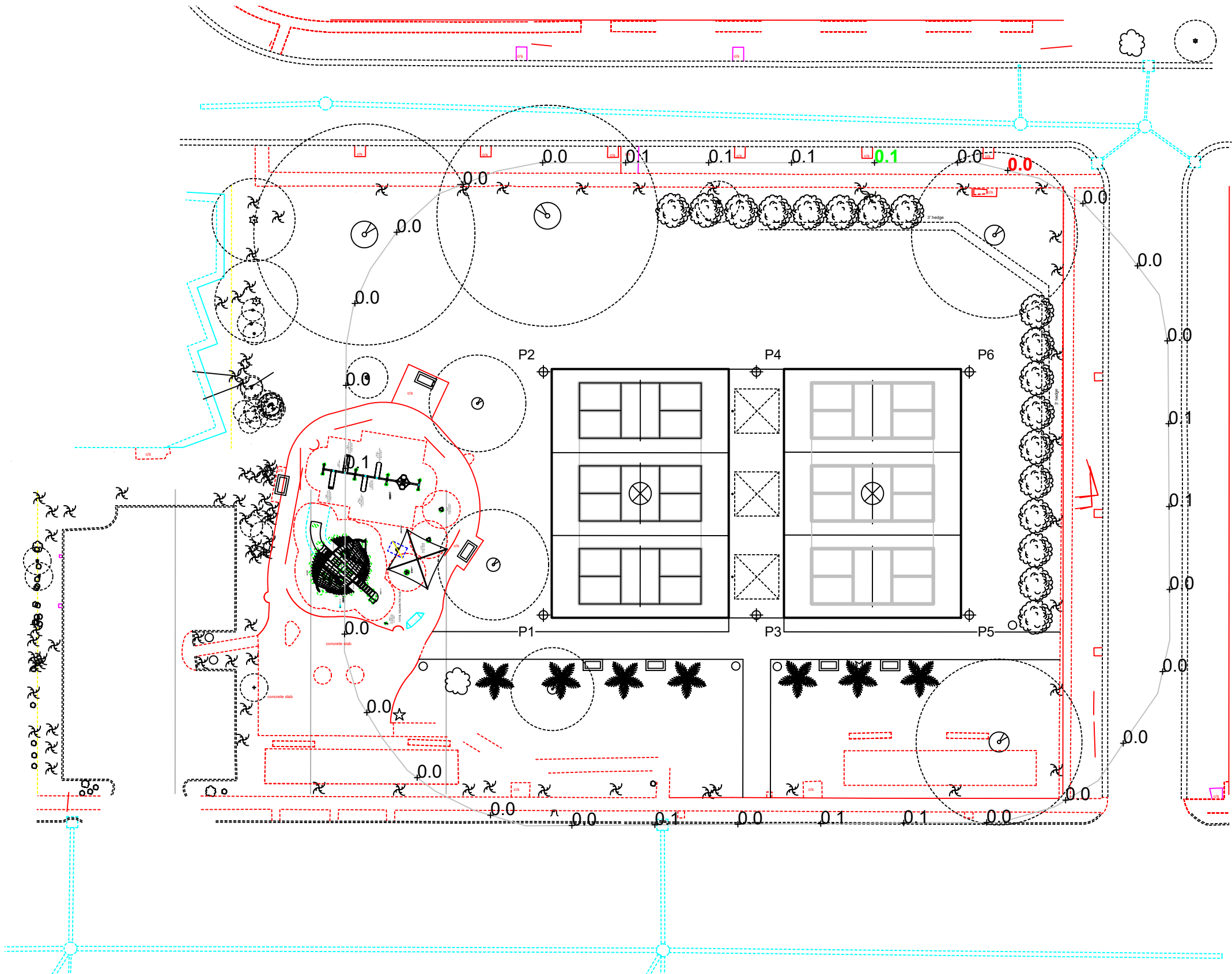
Illumination Summary	
MAINTAINED HORIZONTAL FOOTCANDLES	
Scan Average	0.04
Maximum	0
Minimum	0
Avg/Min	10.56
Max/Min	34.48
UG (adjacent pts)	0.00
No. of Points	32
LUMINAIRE INFORMATION	
Applied Circuits	A,B
No. of Luminaires	16
Total Load	8.64 kW

Guaranteed Performance: The ILLUMINATION described above is guaranteed per your Musco Warranty document and includes a 0.95 dirt depreciation factor.

Field Measurements: Individual field measurements may vary from computer-calculated predictions and should be taken in accordance with IESNA RP-6-15.

Electrical System Requirements: Refer to Amperage Draw Chart and/or the "Musco Control System Summary" for electrical sizing.

Installation Requirements: Results assume ± 3% nominal voltage at line side of the driver and structures located within 3 feet (1m) of design locations.



SCALE IN FEET 1 : 40
 0' 40' 80'
 ENGINEERED DESIGN By: • File #233743A • 08-Mar-24

Pole location(s) ⊕ dimensions are relative to 0,0 reference point(s) ⊗



Not to be reproduced in whole or part without the written consent of Musco Sports Lighting, LLC. ©1981, 2023 Musco Sports Lighting, LLC.

ILLUMINATION SUMMARY

McKay Park Pickleball

Clearwater, FL

Grid Summary	
Name	Spill 75ft Offset
Spacing	30.0' x 10.0'
Height	3.0' above grade

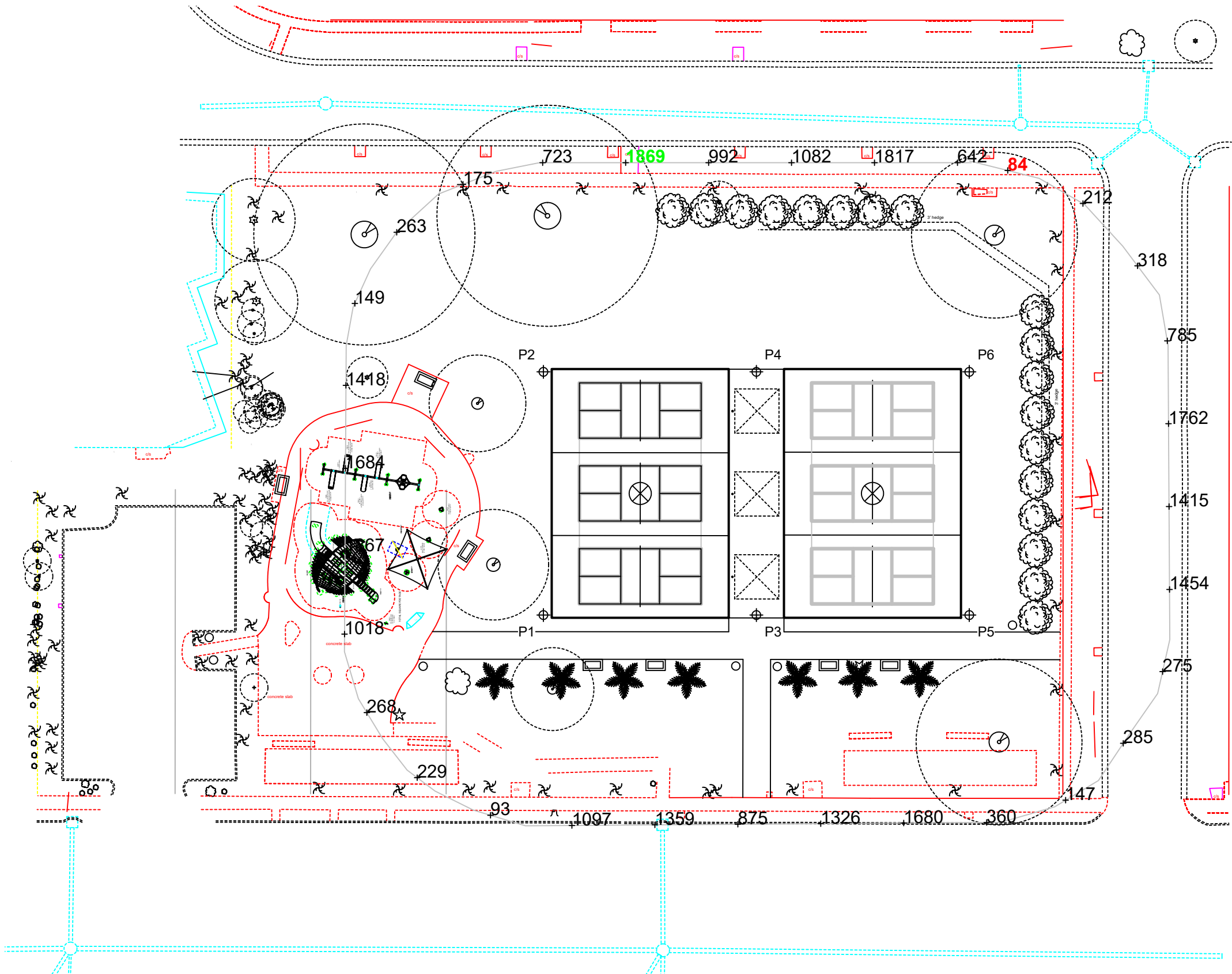
Illumination Summary	
MAINTAINED MAX CANDELA (PER FIXTURE)	
Entire Grid	
Scan Average	866.38
Maximum	1869
Minimum	84
Avg/Min	10.37
Max/Min	22.37
UG (adjacent pts)	0.00
No. of Points	32
LUMINAIRE INFORMATION	
Applied Circuits	A,B
No. of Luminaires	16
Total Load	8.64 kW

Guaranteed Performance: The ILLUMINATION described above is guaranteed per your Musco Warranty document and includes a 0.95 dirt depreciation factor.

Field Measurements: Individual field measurements may vary from computer-calculated predictions and should be taken in accordance with IESNA RP-6-15.

Electrical System Requirements: Refer to Amperage Draw Chart and/or the "Musco Control System Summary" for electrical sizing.

Installation Requirements: Results assume ± 3% nominal voltage at line side of the driver and structures located within 3 feet (1m) of design locations.



SCALE IN FEET 1 : 40
 0' 40' 80'
 ENGINEERED DESIGN By: • File #233743A • 08-Mar-24

Pole location(s) ⊕ dimensions are relative to 0,0 reference point(s) ⊗



Not to be reproduced in whole or part without the written consent of Musco Sports Lighting, LLC. ©1981, 2023 Musco Sports Lighting, LLC.

ILLUMINATION SUMMARY

McKay Park Pickleball

Clearwater, FL

Equipment Layout

INCLUDES:
 - Pickleball 1-3
 - Pickleball 4-6

Electrical System Requirements: Refer to Amperage Draw Chart and/or the "Musco Control System Summary" for electrical sizing.

Installation Requirements: Results assume ± 3% nominal voltage at line side of the driver and structures located within 3 feet (1m) of design locations.

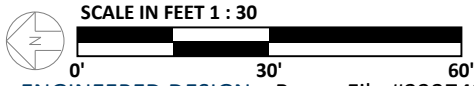
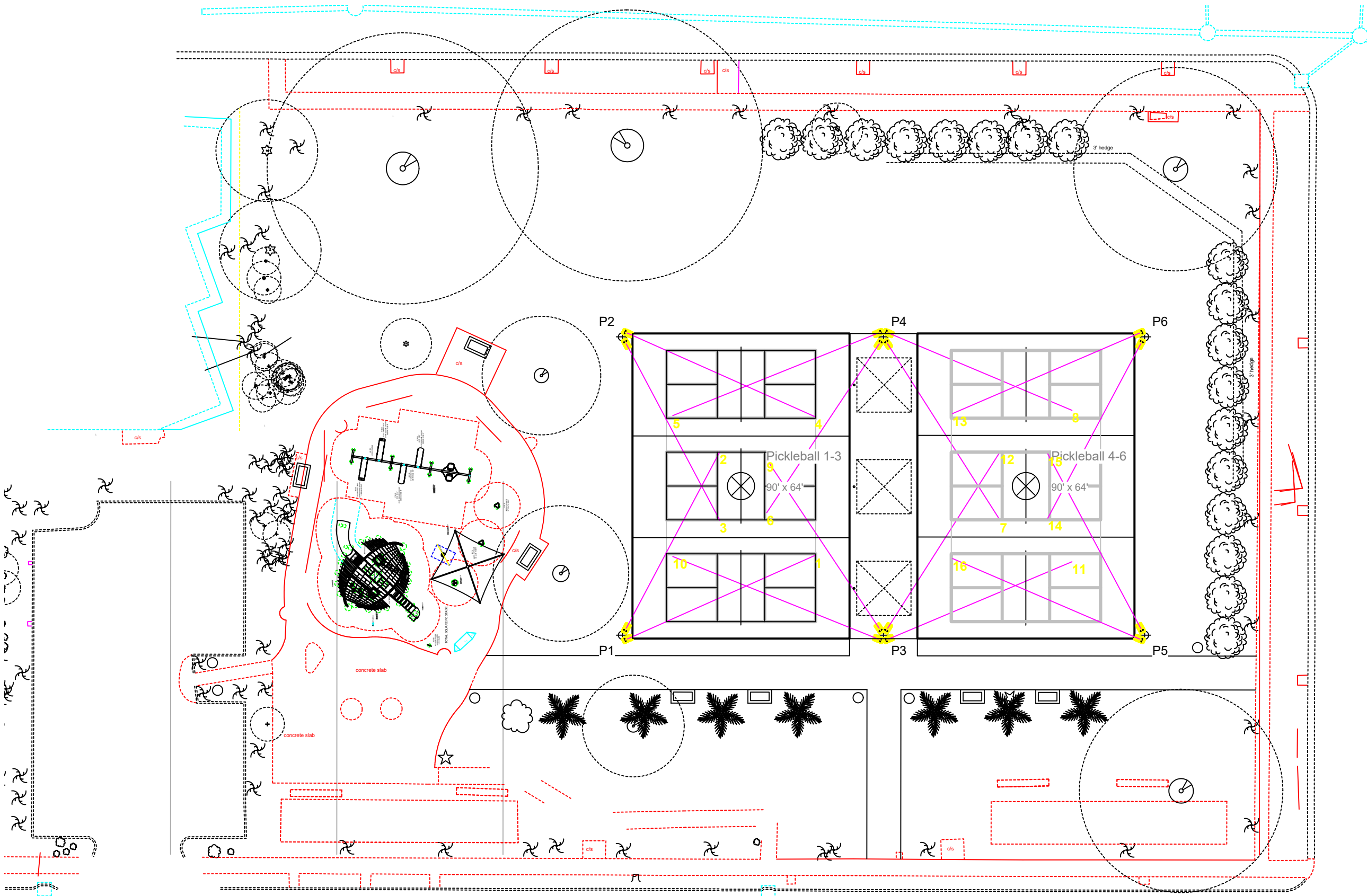
Equipment List For Areas Shown

QTY	Pole			Luminaires		
	LOCATION	SIZE	GRADE ELEVATION	ABOVE GRADE LEVEL	LUMINAIRE TYPE	QTY/POLE
4	P1-P2 P5-P6	40'	-	40'	TLC-LED-550	2
2	P3-P4	40'	-	40'	TLC-LED-550	2/2*
6	Totals					16

*This structure utilizes a back-to-back mounting configuration

Single Luminaire Amperage Draw Chart

Driver Specifications (.90 min power factor)	Line Amperage Per Luminaire (max draw)						
	208 (60)	220 (60)	240 (60)	277 (60)	347 (60)	380 (60)	480 (60)
Single Phase Voltage							
TLC-LED-550	3.2	3.0	2.8	2.4	1.9	1.8	1.4



ENGINEERED DESIGN By: • File #233743A • 08-Mar-24

Pole location(s) ⊕ dimensions are relative to 0,0 reference point(s) ⊗



We Make It Happen.

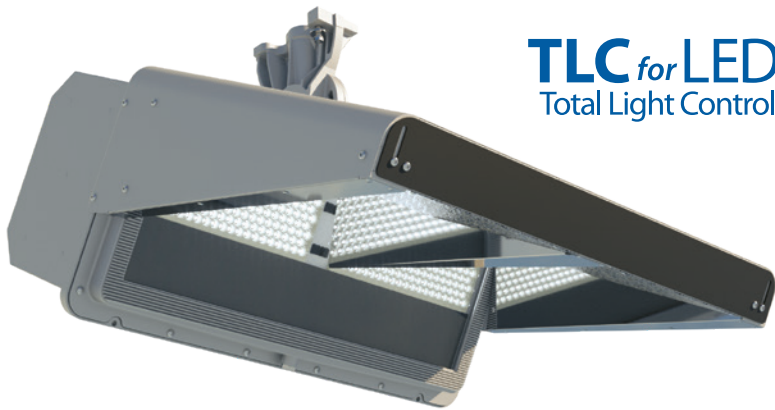
Not to be reproduced in whole or part without the written consent of Musco Sports Lighting, LLC. ©1981, 2023 Musco Sports Lighting, LLC.

Light·Structure System™

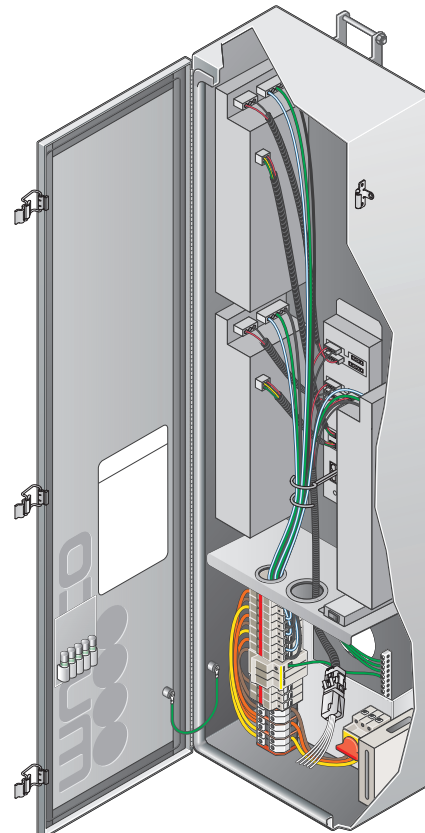
5 Easy Pieces™

Complete System from
Foundation to Poletop

LED Light Source



TLC for LED
Total Light Control™



All components designed to work together . . .
factory built, wired, aimed, and tested
to assure reliable, trouble-free operation

Covered by a 25-year product assurance and warranty
program with guaranteed light levels, parts and labor
for maintenance, system monitoring, and 24/7 support
from our Control-Link Central™ service center.

For your
BUDGET,
for the
ENVIRONMENT.

