

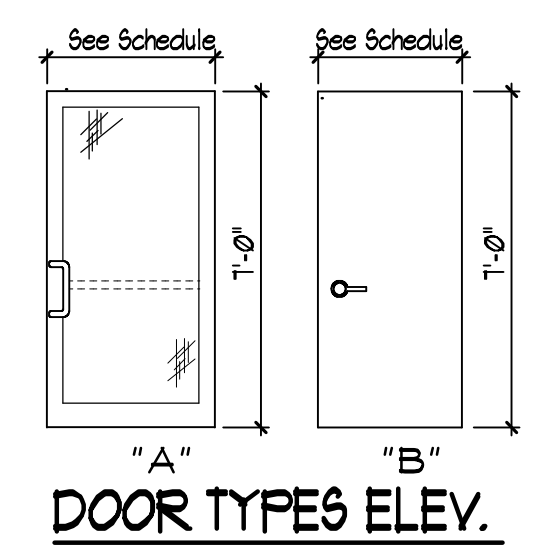
# Partial Floor Plan

SCALE: 1/4" = 1'-0"

**Legend:**

- EXISTING DOOR/WINDOWS TO REMAIN: DOORS (E), WINDOWS (E)
- EXISTING CONSTRUCTION TO REMAIN: (E)
- EXISTING CONSTRUCTION TO BE REMOVED: (E)

**INTERIOR WALL CONSTRUCTION:**  
 3/4" X 1 1/2" 20 ga. METAL STUDS @ 16" OC  
 W/ 5/8" GYPSUM DRYWALL BOTH SIDES

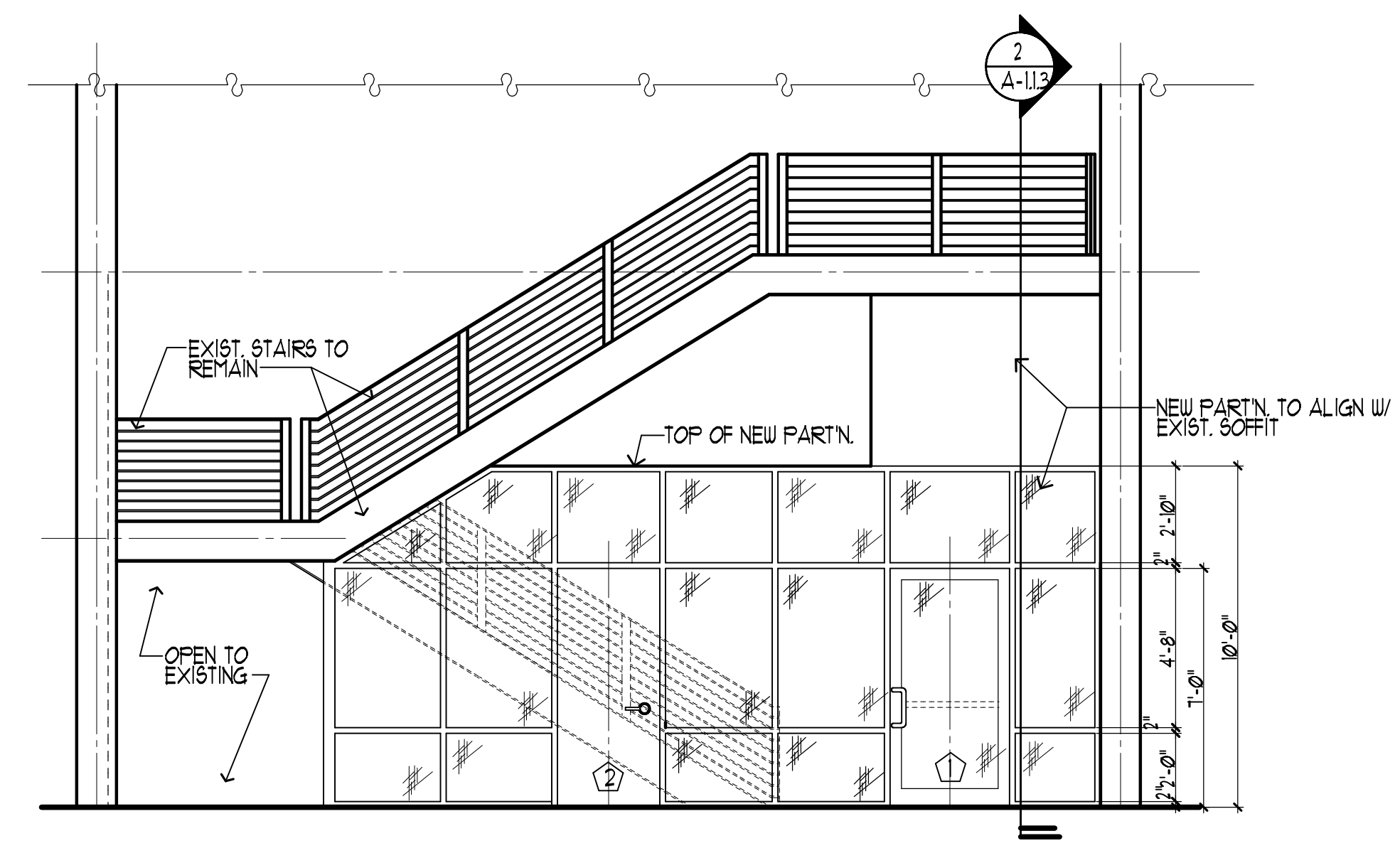


## DOOR SCHEDULE

NO.	TYPE	W	H	MATERIAL	FINISH	FRAME	LOCATION	HARDWARE	REMARKS
1	A	36"	1'-0"	ALUM. &#226; LAY. GLASS	ANOD. ALUM.	STOREFRONT TYPE	LOBBY/HALLWAY	SEE HARDWARE SET #1 BELOW	AMERICAN PRODUCTS ALUMINUM ENTRANCE DOOR SERIES F-2000 API
2	A	30"	1'-0"	SOLID CORE 1000	LAMINATE	PAINT	SECURITY DECK	SEE HARDWARE SET #2 BELOW	
3	B	30"	1'-0"	SOLID CORE 1000	LAMINATE	PAINT	CONF. RM. #CE 108	2 FR. 4" BUTTS, 1 MORTISE EXIT SET	1 HR. LABELED DOOR &#226; FRAME FINISH TO MATCH EXISTING DOORS.

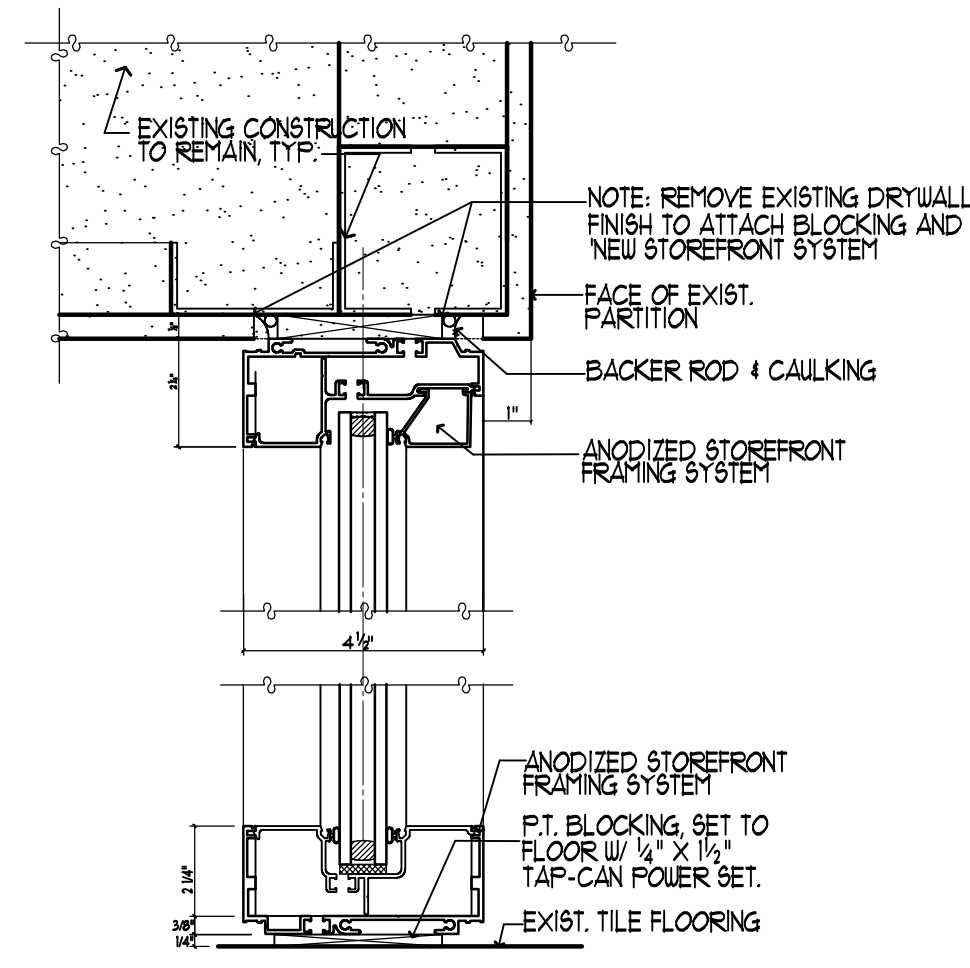
DOOR HARDWARE SET #1: 2 FR. 4" BUTTS, ADAMS RITE 8400 EXIT DEVICE, HES #8500 1/24 AND FB 501 603 ELECTRIC LATCH, STANLEY ADA COMPLIANT PULLER OPERATOR DEVICE, PROXIMITY CARD READER DEVICE TIED INTO EXISTING CITY'S CARD ACCESS SYSTEM, 5 RF. OPENERS.

DOOR HARDWARE SET #2: 2 FR. 4" BUTTS, ADAMS RITE #16-1051 DEADLOCK, LCN SERIES 1260 CLOSURE, PROVIDE 2 5/8" CYLINDERS.



# Elevation 1/A-1.1.3

SCALE: 1/4" = 1'-0"



# Detail 2 A-1.1.3

SCALE: 3/4" = 1'-0"

BY	
REVISION	
NO.	
DATE	
DESIGN	SRF
DATE	22.Dec.'16

Floor Plan & Details - Phase 2  
 Lobby & Customer Service Remodeling  
 Ground Floor 108  
 100 S. Myrtle Ave  
 Clearwater, Florida 33756

PROJECT NO.	16-218
SHEET NO.	A-1.1.3