

**THIS IS NOT A SURVEY**

THERE MAY BE ADDITIONAL RESTRICTIONS AFFECTING THIS PROPERTY THAT MAY BE FOUND IN THE PUBLIC RECORDS OF THIS COUNTY. THIS LEGAL DESCRIPTION AND SKETCH WAS PREPARED WITHOUT THE BENEFIT OF A TITLE COMMITMENT. BEARINGS ARE ASSUMED

**Exhibit "A"**

**LEGAL DESCRIPTION:**

A centerline of Right-of-Way lying within Government Lots 1 and 4, Sections 15 and 16, Township 29 South, Range 16 East, Pinellas County, Florida, being more particularly described as follows:

COMMENCE at the intersection of the Southerly extension of the centerline of BAYSHORE BOULEVARD and the centerline of US ROUTE 60; thence Easterly along said centerline of US ROUTE 60, for 2,100 feet, more or less to the point of intersection with the centerline of DAMASCUS ROAD, same being the POINT OF BEGINNING; thence leaving said centerline of US ROUTE 60, Northerly, along said centerline of DAMASCUS ROAD, for 250 feet, more or less; thence Northeasterly, continuing along said centerline of DAMASCUS ROAD, for 910 feet, more or less to the POINT OF TERMINUS.

Lying within the following described property:

The land referred to herein below is situated in the County of Pinellas, State of Florida, and is described as follows:

A parcel of land located within Government Lot 1, Section 15, Township 29 South, Range 16 East and Government Lot 4, Section 16, Township 29 South, Range 16 East, and the North 1/2 of the Northeast 1/4 of said Section 16, Pinellas County, Florida, being more particularly described as follows:

Commence at the Northeast corner of said Government Lot 4 for the Point of Beginning of this description; thence S89°30'50"E along the Easterly projection of the North line of said Government Lot 4 for a distance of 524.51 feet to the Deep Water Channel of Tampa Bay; thence departing said Easterly projection along said Channel the following two (2) courses: 1) thence S43°23'49"W for a distance of 763.40 feet; 2) thence S44°38'51"W for a distance of 392.80 feet; thence departing said Channel S80°52'25"W for a distance of 345.42 feet to a point on a line that is 50.00 feet from (as measured at right angles to) and parallel with the Northerly right-of-way line of State Road 60 (also known as Gulf to Bay Boulevard, Courtney Campbell Causeway and Davis Causeway), a variable width right-of-way; thence along said parallel line S82°35'34"W for a distance of 47.12 feet; thence departing said parallel line S89°45'39"W for a distance of 103.93 feet; thence S00°12'38"E for a distance of 13.08 feet to said parallel line; thence along said parallel line S82°35'34"W for a distance of 41.51 feet; thence departing said parallel line S89°47'22"W for a distance of 51.52 feet; thence S33°01'58"E for a distance of 6.47 feet to said parallel line; thence along said parallel line S82°35'34"W for a distance of 54.25 feet; thence departing said parallel line N17°57'12"W for a distance of 1.90 feet; thence N08°41'14"E for a distance of 11.20 feet; thence S89°47'22"W for a distance of 5.31 feet; thence S24°52'04"W for a distance of 4.07 feet; thence S59°38'37"W for a distance of 21.04 feet; thence N83°06'54"W for a distance of 15.93 feet; thence S03°24'39"W for a distance of 5.68 feet to said parallel line; thence along said parallel line S82°35'34"W for a distance of 93.56 feet; thence departing said parallel line N63°03'36"W for a distance of 4.61 feet; thence S34°48'54"W for a distance of 3.51 feet to said parallel line; thence along said parallel line S82°35'34"W for a distance of 48.30 feet; thence departing said parallel line N18°25'35"E for a distance of 17.60 feet; thence N66°10'36"W for a distance of 11.75 feet; thence N07°24'44"E for a distance of 36.90 feet; thence N27°46'29"E

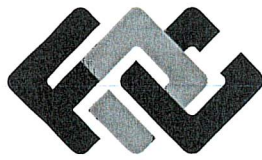
NOTE: THE GEOMETRY SHOWN HEREON IS PER THAT CERTAIN SKETCH AS RECORDED IN OFFICIAL RECORDS BOOK 1936, PAGE 522, OF THE PUBLIC RECORDS OF PINELLAS COUNTY, FLORIDA, AND IS SUBJECT TO AN ACCURATE FIELD BOUNDARY SURVEY.

PREPARED FOR: **CLEARWATER CHRISTIAN COLLEGE**

SHEET DESCRIPTION: **DAMASCUS ROAD RIGHT-OF-WAY VACATION**

|                |                    |               |                |                 |  |
|----------------|--------------------|---------------|----------------|-----------------|--|
| SCALE:<br>NONE | DATE:<br>7-17-2017 | DRAWN:<br>BGD | CALCED:<br>JTP | CHECKED:<br>JTP | SEE SHEET 1 & 2 FOR LEGAL DESCRIPTION<br>SEE SHEET 3 FOR SKETCH AND LEGEND |
|----------------|--------------------|---------------|----------------|-----------------|--|

|                       |             |                     |                   |                |
|-----------------------|-------------|---------------------|-------------------|----------------|
| JOB No.:<br>2017-0026 | EPN:<br>780 | SECTION:<br>15 & 16 | TOWNSHIP:<br>29 S | RANGE:<br>16 E |
|-----------------------|-------------|---------------------|-------------------|----------------|



**FLORIDA DESIGN CONSULTANTS, INC.**  
— THINK IT. ACHIEVE IT. —

3030 STARKEY BOULEVARD, NEW PORT RICHEY, FLORIDA 34655  
PHONE: (800) 532 - 1047 FAX: (727) 848 - 3648 WWW.FLDESIGN.COM L.B. NO.6707

NOT VALID WITHOUT THE SIGNATURE AND THE ORIGINAL RAISED SEAL OF A FLORIDA LICENSED SURVEYOR AND MAPPER.

*[Signature]*  
JARED T. PATENAUDE  
PROFESSIONAL SURVEYOR AND MAPPER  
LICENSE NUMBER PSM 6971  
STATE OF FLORIDA

**THIS IS NOT A SURVEY**

THERE MAY BE ADDITIONAL RESTRICTIONS AFFECTING THIS PROPERTY THAT MAY BE FOUND IN THE PUBLIC RECORDS OF THIS COUNTY. THIS LEGAL DESCRIPTION AND SKETCH WAS PREPARED WITHOUT THE BENEFIT OF A TITLE COMMITMENT. BEARINGS ARE ASSUMED

**Exhibit "A"**

**LEGAL DESCRIPTION: (CONTINUED)**

for a distance of 34.57 feet; thence N22°06'03"E for a distance of 26.14 feet; thence S85°27'49"E for a distance of 21.03 feet; thence N00°22'32"W for a distance of 47.05 feet; thence N76°03'09"W for a distance of 10.17 feet; thence N09°14'50"W for a distance of 49.43 feet; thence N21°51'04"W for a distance of 49.13 feet; thence N61°45'36"W for a distance of 15.55 feet; thence N39°48'21"W for a distance of 36.76 feet; thence N03°51'29"E for a distance of 38.04 feet; thence N01°01'26"W for a distance of 39.77 feet; thence N39°14'16"W for a distance of 22.62 feet; thence N02°01'50"E for a distance of 6.68 feet; thence N48°07'04"E for a distance of 21.83 feet; thence N23°43'08"W for a distance of 23.22 feet; thence N60°13'20"E for a distance of 17.15 feet; thence N06°42'31"E for a distance of 10.05 feet; thence N41°29'06"W for a distance of 13.11 feet; thence N45°22'31"E for a distance of 25.74 feet; thence N63°18'48"E for a distance of 23.82 feet; thence N53°55'07"E for a distance of 49.94 feet; thence N00°16'34"W for a distance of 56.85 feet; thence N89°43'26"E for a distance of 180.68 feet; thence N00°16'34"W for a distance of 107.99 feet; thence N89°43'26"E for a distance of 17.99 feet; thence N00°56'49"W for a distance of 68.66 feet; thence N14°00'29"W for a distance of 71.74 feet; thence N14°13'49"W for a distance of 31.35 feet; thence N25°04'24"W for a distance of 148.53 feet to a point of curvature; thence along said curve to the right having a radius of 25.00 feet, an arc length of 39.24 feet, a central angle of 89°56'13", a chord bearing of N19°53'43"E and a chord distance of 35.34 feet to a point of tangency; thence N64°51'49"E for a distance of 43.89 feet; thence N55°02'03"E for a distance of 61.06 feet; thence N61°14'38"E for a distance of 52.20 feet; thence N63°49'38"E for a distance of 37.84 feet; thence N70°22'20"E for a distance of 92.52 feet; thence N68°05'27"E for a distance of 104.70 feet to a point of curvature; thence along said curve to the right having a radius of 25.00 feet, an arc length of 37.46 feet, a central angle of 85°51'05", a chord bearing of S68°13'01"E and a chord distance of 34.05 feet to point of tangency; thence S25°17'28"E for a distance of 63.57 feet; thence N36°18'39"E for a distance of 40.81 feet; thence N29°55'15"E for a distance of 19.77 feet; thence N66°58'31"E for a distance of 18.51 feet; thence S85°43'35"E for a distance of 27.81 feet; thence N71°55'13"E for a distance of 24.66 feet; thence N52°06'00"E for a distance of 30.63 feet; thence S89°49'20"E for a distance of 204.74 feet; thence N62°13'50"E for a distance of 9.09 feet; thence N21°46'43"E for a distance of 26.32 feet; thence N34°38'33"W for a distance of 28.03 feet; thence N40°45'36"W for a distance of 36.60 feet; thence S85°40'57"W for a distance of 47.45 feet; thence N42°47'16"W for a distance of 17.54 feet; thence N21°20'23"E for a distance of 11.80 feet; thence N89°08'03"E for a distance of 23.76 feet; thence N47°26'36"E for a distance of 9.50 feet; thence N06°22'13"E for a distance of 27.47 feet; thence N78°25'27"E for a distance of 22.62 feet; thence N46°51'13"E for a distance of 14.18 feet; thence S49°55'47"E for a distance of 20.43 feet; thence S23°46'33"E for a distance of 25.83 feet; thence N71°05'46"E for a distance of 56.43 feet; thence S38°52'30"E for a distance of 9.36 feet; thence S67°05'16"E for a distance of 24.28 feet; thence N33°07'17"E for a distance of 24.29 feet; thence S69°05'02"E for a distance of 28.70 feet; thence S24°08'40"E for a distance of 30.96 feet; thence S20°16'44"E for a distance of 8.64 feet; thence S87°50'35"W for a distance of 11.51 feet; thence S26°48'43"W for a distance of 19.46 feet; thence S23°25'49"W for a distance of 19.13 feet; thence S11°23'43"E for a distance of 24.18 feet; thence N49°11'46"E for a distance of 17.83 feet; thence N82°59'36"E for a distance of 34.97 feet to the East line of said Section 16, Township 29 South, Range 16 East; thence S00°00'00"W along said Section line for a distance of 279.89 feet to the Northeast corner of said Government Lot 4 and the aforementioned Point of Beginning of this description.

NOTE: THE GEOMETRY SHOWN HEREON IS PER THAT CERTAIN SKETCH AS RECORDED IN OFFICIAL RECORDS BOOK 1936, PAGE 522, OF THE PUBLIC RECORDS OF PINELLAS COUNTY, FLORIDA, AND IS SUBJECT TO AN ACCURATE FIELD BOUNDARY SURVEY.

PREPARED FOR:

**CLEARWATER CHRISTIAN COLLEGE**

SHEET DESCRIPTION:

**DAMASCUS ROAD RIGHT-OF-WAY VACATION**

|                       |                    |                     |                   |                 |  |
|-----------------------|--------------------|---------------------|-------------------|-----------------|--|
| SCALE:<br>NONE        | DATE:<br>7-17-2017 | DRAWN:<br>BGD       | CALCED:<br>JTP    | CHECKED:<br>JTP | SEE SHEET 1 & 2 FOR LEGAL DESCRIPTION<br>SEE SHEET 3 FOR SKETCH AND LEGEND |
| JOB No.:<br>2017-0026 | EPN:<br>780        | SECTION:<br>15 & 16 | TOWNSHIP:<br>29 S | RANGE:<br>16 E  |  |



**FLORIDA DESIGN CONSULTANTS, INC.**

— THINK IT. ACHIEVE IT. —

3030 STARKEY BOULEVARD, NEW PORT RICHEY, FLORIDA 34655  
PHONE: (800) 532-1047 FAX: (727) 848-3648 WWW.FLDESIGN.COM L.B. NO.6707

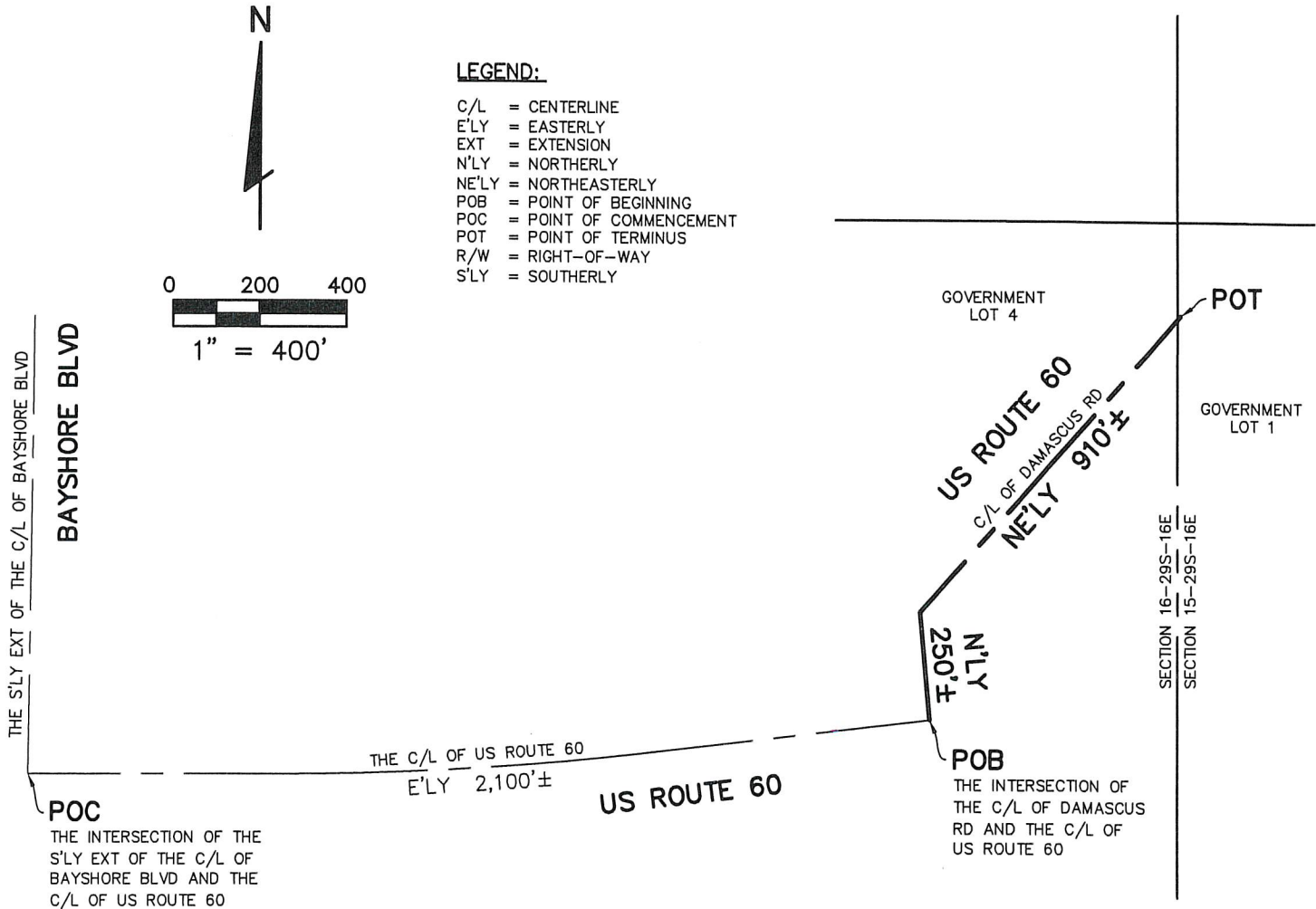
NOT VALID WITHOUT THE SIGNATURE AND THE ORIGINAL RAISED SEAL OF A FLORIDA LICENSED SURVEYOR AND MAPPER.

*Jared T. Patenaude*  
JARED T. PATENAUDE  
PROFESSIONAL SURVEYOR AND MAPPER  
LICENSE NUMBER PSM 6971  
STATE OF FLORIDA

**THIS IS NOT A SURVEY**

THERE MAY BE ADDITIONAL RESTRICTIONS AFFECTING THIS PROPERTY THAT MAY BE FOUND IN THE PUBLIC RECORDS OF THIS COUNTY. THIS LEGAL DESCRIPTION AND SKETCH WAS PREPARED WITHOUT THE BENEFIT OF A TITLE COMMITMENT. BEARINGS ARE ASSUMED

**Exhibit "A"**



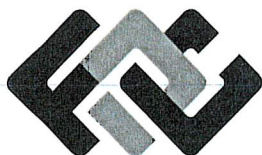
NOTE: THE GEOMETRY SHOWN HEREON IS PER THAT CERTAIN SKETCH AS RECORDED IN OFFICIAL RECORDS BOOK 1936, PAGE 522, OF THE PUBLIC RECORDS OF PINELLAS COUNTY, FLORIDA, AND IS SUBJECT TO AN ACCURATE FIELD BOUNDARY SURVEY.

PREPARED FOR: **CLEARWATER CHRISTIAN COLLEGE**

SHEET DESCRIPTION: **DAMASCUS ROAD RIGHT-OF-WAY VACATION**

|                   |                    |               |                |                 |  |
|-------------------|--------------------|---------------|----------------|-----------------|--|
| SCALE:<br>1"=400' | DATE:<br>7-17-2017 | DRAWN:<br>BGD | CALCED:<br>JTP | CHECKED:<br>JTP | SEE SHEET 1 & 2 FOR LEGAL DESCRIPTION<br>SEE SHEET 3 FOR SKETCH AND LEGEND |
|-------------------|--------------------|---------------|----------------|-----------------|--|

|                       |             |                     |                   |                |
|-----------------------|-------------|---------------------|-------------------|----------------|
| JOB No.:<br>2017-0026 | EPN:<br>780 | SECTION:<br>15 & 16 | TOWNSHIP:<br>29 S | RANGE:<br>16 E |
|-----------------------|-------------|---------------------|-------------------|----------------|



**FLORIDA DESIGN CONSULTANTS, INC.**

— THINK IT. ACHIEVE IT. —

3030 STARKEY BOULEVARD, NEW PORT RICHEY, FLORIDA 34655  
PHONE: (800) 532-1047 FAX: (727) 848-3648 WWW.FLDESIGN.COM L.B. NO.6707

NOT VALID WITHOUT THE SIGNATURE AND THE ORIGINAL RAISED SEAL OF A FLORIDA LICENSED SURVEYOR AND MAPPER.

*Jared T. Patenaude*  
JARED T. PATENAUDE  
PROFESSIONAL SURVEYOR AND MAPPER  
LICENSE NUMBER PSM 6971  
STATE OF FLORIDA