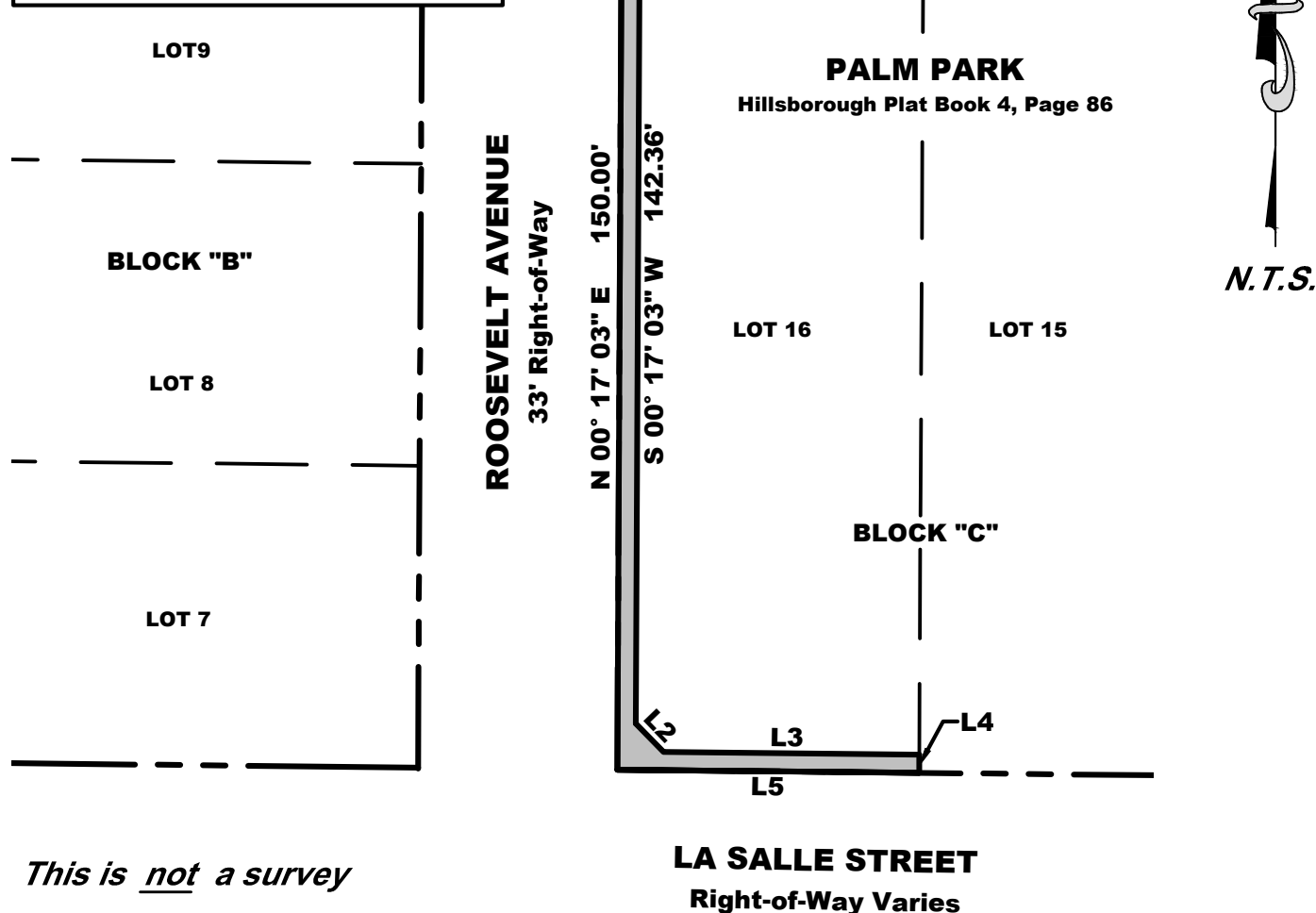


LINE TABLE		
LINE #	BEARING	DISTANCE
L1	S 89° 23' 29" E	3.00'
L2	S 44° 33' 13" E	6.58'
L3	S 89° 23' 29" E	42.36'
L4	S 00° 17' 03" W	3.00'
L5	N 89° 23' 29" W	50.00'



Legal Description

A Sidewalk and Utility Easement described as follows:

Commence at the Northwest corner of Lot 16, Block C of the plat "Palm Park" recorded in Hillsborough Plat Book 4, Page 86 of the Public Records of Hillsborough County, Florida of which Pinellas County was formerly a part; thence S 89° 23' 29" E, a distance of 3.00'; thence S 00° 17' 03" W, a distance of 142.36'; thence S 44° 33' 13" E, a distance of 6.58'; thence S 89° 23' 29" E, a distance of 42.36'; thence S 00° 17' 03" W, a distance of 3.00'; thence N 89° 23' 29" W, a distance of 50.00'; thence N 00° 17' 03" E, a distance of 150.00' to the Point of Beginning.

Containing 602 Square Feet, more or less.

CITY OF CLEARWATER
DEPARTMENT OF PUBLIC WORKS -
ENGINEERING

DRAWN BY
Lee Cheek

CHECKED BY
--TM--

1205 Roosevelt Avenue
Sidewalk and Public Utility Easment

DWG. NO.	SHEET	
Lgl 2023-05	1	OF 1
SECT-TWNSP-RNG	10	29S - 15E
DATE DRAWN	5/1/2023	