



4150 S.W. 19 Street
 Ocala, FL 34474
 p: (800) 609-6066 | f: (352) 237-2256
 www.shadesystemsinc.com

Sales Order

Bill To: **City of Clearwater**
 100 S. Myrtle Avenue
 Clearwater, Florida 33756
 Matthew Anderson
 matt.anderson@myclearwater.com

Prepared By: **Jeremy Purkis (ext. 119)**
 (800) 609-6066
 jeremy@shadesystemsinc.com

Quote No.: Q-10197
Quote Date: 8/15/2023
Expires On: 11/15/2023

Project Name: **BayCare Ball Park Bullpen**

Thank you for your interest in Shade Systems. We are happy to quote the following product(s):

QTY	DESCRIPTION	EACH	TOTAL
1	Custom Monoslope Cantilever System Per The Attached Drawing Number: Q-10197, Dated 06/14/2023 Per the Following: CoolNet™ Color: _____ Powder-Coat Color: _____	\$0.00	\$0.00
3	Model No. SC252512 Cantilever	\$14,597.00	\$43,791.00
4	Model No. PMT6 - Pier Mount Column - Over 6" Column Diameter	\$717.00	\$2,868.00
2	Model No. SPCOL - Custom Powder Coat Color Charge	\$448.00	\$896.00
1	Model No. ENGDWG - Florida Professional Engineer Sealed Drawings	\$896.00	\$896.00
1	Model No. ENGCAL - Florida Professional Engineer Sealed Calculations	\$896.00	\$896.00
1	Less: 25% Discount Per Volusia County School Contract # MTS-906BC (For Product)	\$-12,336.75	\$-12,336.75
1	Optional: Professional installation, including truck unloading, permitting, concrete cutting, excavation and concrete footings, dirt haul off, erection of frame and fabric, and materials. (Does not include permit fees. Permit fees to be waived by City or added to final invoice at cost.)	\$122,377.00	\$122,377.00
1	Less: 25% Discount Per Volusia County School Contract # MTS-906BC (For Installation)	\$-30,594.25	\$-30,594.25
1	Shipping / Handling Charge to Clearwater, Florida 33765	\$2,211.00	\$2,211.00
TOTAL:			\$131,004.00

IMPORTANT TERMS & CONDITIONS:

- All products quoted are per standard Shade Systems specifications per our catalog with column type(s) indicated.
- No site work, or landscaping, are included. We are not responsible for any damages to underground utilities or irrigation lines, nor for replenishment of any damaged sod or landscaping/trees. Customer is responsible for identifying any underground utilities and capping or re-routing same. Customer to provide clear access to site for heavy machinery, including any tree removal or trimming, including removal of any fence sections as required.
- While we always take care to protect property, because we must access the installation site with heavy equipment, we cannot be responsible for any damages to existing sidewalks, pavers, asphalt or other hardscapes or sod as we pass over them.
- Customer to provide a current survey of the site. Quote to include our standard professional engineer-sealed drawings and calculations only. Any additional building department requests such as "community appearance board" meeting(s), soil borings, testing, spot survey, etc., which require the services of a professional engineer are not included in this quotation. This quote assumes normal ground conditions; unusual underground conditions such as high water table, loose/unstable soil conditions, underground boulders, or other unexpected underground obstacles which necessitate extraction or soil testing and/or re-design of footings are not included and will be quoted as an additional cost if encountered.
- The sizes and heights proposed are pursuant to information you have provided and must be verified by you on site. We are not responsible for any conflicts with existing conditions, being too close to landscaping, sidewalks, curbs, seating areas, buildings, etc.
- This quote is subject to site inspection at which time obstacles or other adverse site conditions may require a change in quotation.

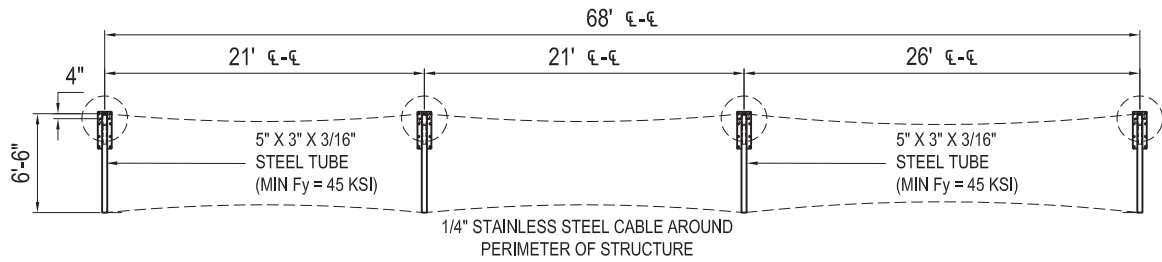
- Current shipping schedule is estimated at 6 to 8 weeks after issuance of permit. (All Associated Permitting Fees Are Excluded)
- To place this order, please indicate desired colors in the space above and return signed copy of this Sales Order with your official municipal purchase order. Payment terms are Net 30 Days.

ABOVE APPROVED AND ACCEPTED:

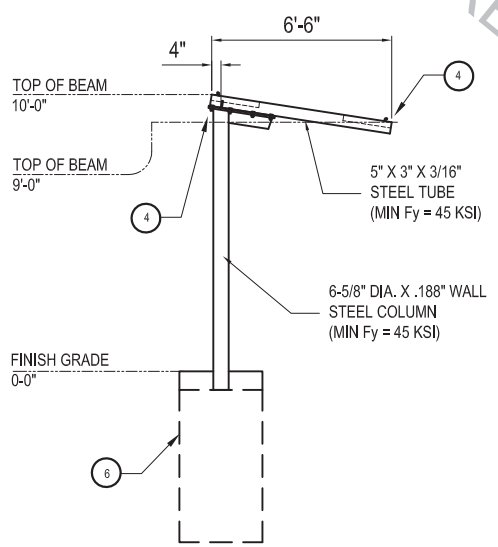
By signing below, Buyer accepts the terms and conditions of this Sales Order and directs Shade Systems to provide the products listed for the amounts shown. Buyer agrees this order is not cancelable.

BY: _____ TITLE: _____ DATE: _____

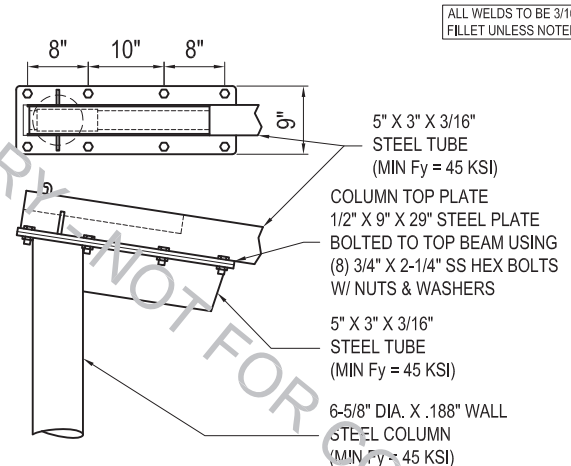
IMPORTANT: The footings sizes provided are estimated only. Depending on local conditions, actual engineered concrete footings may be substantially larger than estimates provided herein. Shade Systems is not responsible for actual engineered footings sizes differing from the estimates given or for any additional concrete installation costs which may be incurred by you as a result thereof.



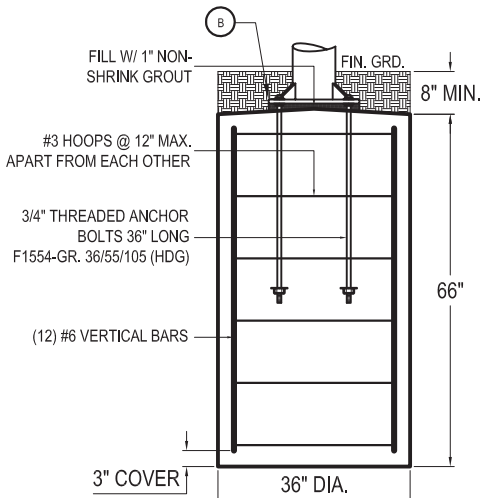
① PLAN VIEW



② ELEVATION VIEW

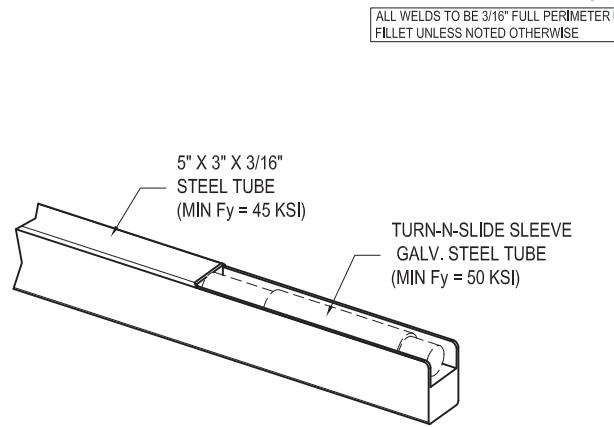


④ BEAM-COLUMN CONNECTION DETAIL

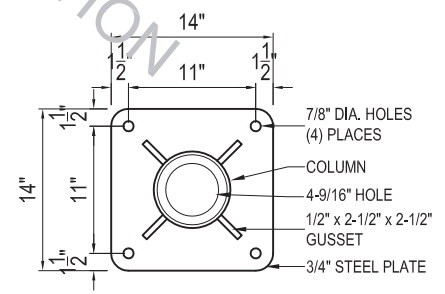


⑥ FOOTING DETAIL

NOTE: GROUT, HOOPS, REBARS & ANCHOR BOLTS NOT SUPPLIED BY FACTORY



⑤ BEAM DETAIL



⑦ BASE PLATE DETAIL

GENERAL NOTES

- 1- THE SHADE SYSTEMS, INC.™ STRUCTURE HAS BEEN DESIGNED IN ACCORDANCE WITH THE 2010 FLORIDA BUILDING CODE WITH EDITORIAL ASSE. 7-18 TO THE FOLLOWING DESIGN CRITERIA:

RISK CATEGORY	STRUCTURE WITH FABRIC CANOPY REMOVED
EXPOSURE	C
BASIC WIND SPEED	105 MPH
 - 2- THE FOUNDATION ASSUMES A MINIMUM SOIL BEARING CAPACITY OF 1700 PSF.
 - 3- ALL FASTENERS SHALL BE STAINLESS STEEL.
 - 4- ALL BOLTS MUST BE SNUG TIGHT. THE SNUG TIGHTENED CONDITION IS THE TIGHTNESS THAT IS ATTAINED WITH THE FULL EFFORT OF A TYPICAL WORKER USING AN ORDINARY SPUD WRENCH TO BRING THE PILES INTO FIRM CONTACT. SNUG TIGHT IS THE CONDITION THAT EXISTS WHEN ALL THE PILES IN A CONNECTION HAVE BEEN PULLED INTO FIRM CONTACT BY THE BOLTS IN THE JOINT AND ALL THE BOLTS IN THE JOINT HAVE BEEN TIGHTENED SUFFICIENTLY TO PREVENT THE REMOVAL OF THE NUTS WITHOUT THE USE OF A WRENCH.
 - 5- THE STRUCTURE HAS BEEN DESIGNED IN ACCORDANCE WITH SECTION 3105.4 OF THE FLORIDA BUILDING GOVERNING THE DESIGN OF FABRIC-COVERED FRAMES. THIS SECTION REQUIRES THAT THE FRAMING MEMBERS BE DESIGNED FOR A WIND VELOCITY OF NOT LESS THAN 105 MPH WITH THE FABRIC ATTACHED. THIS FABRIC SYSTEM IS DESIGNED TO RELEASE WHEN WIND SPEED EXCEEDS 75 MPH.
- STEEL:
- 1- STEEL PIPES SHALL HAVE A MINIMUM YIELD STRENGTH OF 45 KSI. STEEL PLATES SHALL CONFORM TO ASTM A36.
 - 2- ALL PARTS SHALL BE FACTORY-WELDED TO AMERICAN WELDING SOCIETY (AWS) SPECIFICATIONS AND SHALL UTILIZE E7018 AND HAVE THE HIGHEST STANDARDS OF QUALITY WORKMANSHIP.
 - 3- ALL WELDS SHALL BE FILLET WELDS WITH MAXIMUM PERMISSIBLE THROAT THICKNESS OR FULL PENETRATION GROOVE WELDS.
- CONCRETE:
- 1- ALL CONCRETE SHALL BE MIXED AND PLACED IN ACCORDANCE WITH THE LATEST EDITION OF ACI 301 AND 318.
 - 2- CONCRETE SHALL HAVE A MINIMUM 28 DAY COMPRESSIVE STRENGTH (f'c) OF 3000 PSI. A CONCRETE MIX HAVING A LISTED STRENGTH OF AT LEAST 3000 PSI THAT IS MIXED IN ACCORDANCE WITH THE MANUFACTURER'S RECOMMENDATIONS IS ACCEPTABLE FOR USE.
 - 3- REINFORCING STEEL SHALL BE ASTM A-615 GRADE 60 WITH A MINIMUM YIELD STRENGTH (fy) OF 60 KSI.
 - 4- UNLESS OTHERWISE SHOWN, CONCRETE COVER SHALL BE 3" (MIN).
- FABRIC:
- 1- COOLNET™ SHADE FABRICS MEET FIRE STANDARDS FOR SHADE SYSTEMS, INC. INCLUDING CSFM 1237.1 AND NFPA 701 ACROSS ALL COLOR VARIANTS.
- THIS DOCUMENT AND ITS CONTENTS ARE THE PROPERTY OF SHADE SYSTEMS, INC. AND CANNOT BE MODIFIED, USED, OR RESOLD TO ANY PERSON OR ENTITY WITHOUT WRITTEN PERMISSION FROM SHADE SYSTEMS, INC. REPRODUCTION OF THESE PLANS, EITHER IN WHOLE OR IN PART, INCLUDING ANY FORM OF COPYING AND/OR PREPARATION OF DERIVATIVE WORKS THEREOF, FOR ANY REASON WITHOUT PRIOR WRITTEN PERMISSION FROM SHADE SYSTEMS, INC. IS STRICTLY PROHIBITED. © 2023 SHADE SYSTEMS, INC.
- NOTE TO OWNER:**
OWNER ACCEPTS FULL RESPONSIBILITY FOR REMOVING THE FABRIC SHADE MATERIAL FROM THE STEEL FRAME WHEN SEVERE WEATHER CONDITIONS ARE PREDICTED. SUCH CONDITIONS INCLUDE PREDICTED WIND SPEEDS IN EXCESS OF 75 MPH.

Shade systems
 4150 S.W. 19 Street
 Ocala, FL 34474
 Tel.: 1-800-609-6066

BayCare Ballpark
Clearwater, FL

Approved: _____

Model Name: CUSTOM MONOSLOPE SHADE SYSTEMS STRUCTURE

Model No.: **Custom Cantilever**

Revisions

REP: _____

REP QTE. NO. **Q-10197**

Approved: JRB	Job: QTE
Checked: MG	Drawn: RB
Date: 08/14/2023	Sheets: 1 OF 1
NOT TO SCALE	