

Clearwater Beach Marina Sculpture Proposal

Concept 4: "Paradise"

Cecilia Lueza Art Projects

INSPIRATION

Paradise is a free standing sculpture inspired by the waters of the Gulf of Mexico and its captivating beauty.

The circular aluminum sculpture is composed of four panels converging onto one axis. Each panel has undulating patterns that capture the movement of open water. The panels' shadows will create ever changing patterns throughout the day marking the passage of time.

Painted in a smooth gradient of bright cool and warm colors, the artwork creates a stark contrast and provides a unique and vibrant focal point for the marina.

Timelessness is very important to us and our goal for this project was to design a sculpture that would be as relevant and compelling 50 years from now as it is today.

FABRICATION

When it comes to sculptural and three dimensional work, our preferred material is 6061 Aircraft Grade aluminum because of its many great properties such as low density and therefore low weight, high strength, superior malleability, easy machining and excellent corrosion resistance just to name a few. We also design and fabricate our sculptures to withstand hurricane force winds as per South Florida code criteria.

The sculpture would be finished in Tnemec paint assuring decades of maintenance free exposure to the most extreme elements.

All edges will be sanded smooth and there will be no sharp or acute pointed edges.

FINISHES

All of the sculptures' components will be finished using an industrial grade, extremely durable UV and salt vapor resistant Tnemec paint. It is maintenance free and will last for decades.

DIMENSIONS

Height: 10 feet

Width: 9 feet

Base: 3.5 feet high, 5 feet wide at the bottom

INSTALLATION

A round receiving cleat would be bolted to the concrete pedestal and then the sculpture is to be lowered onto the cleat and fastened by flush flathead stainless screws along the bottom perimeter. Threaded bolts drilled and anchored Using world renowned Hilti HIT epoxy.

FOUNDATION

Rebar reinforced cast in place 3,500 psi poured concrete with dimensions of 5 feet wide by 3.5 feet high above grade. We will supply engineered drawings for permitting.

ILLUMINATION

At night the installation would be illuminated with high intensity LED lighting.

We will supply the LED well "in ground" light fixtures that will be connected to the existing electrical circuit.

TIMELINE

180 days for production.

1 - 2 days for complete installation.

BUDGET

Production drawings \$1,500

Engineering \$2,500

Materials \$20,950

Fabrication \$30,900

Installation \$1,750

Transportation \$1,200

Project documentation \$500

Artist fee \$15,700

TOTAL \$75,000

PARADISE



Cecilia Lueza Art Projects 2025



Cecilia Lueza Art Projects 2025



Cecilia Lueza Art Projects 2025



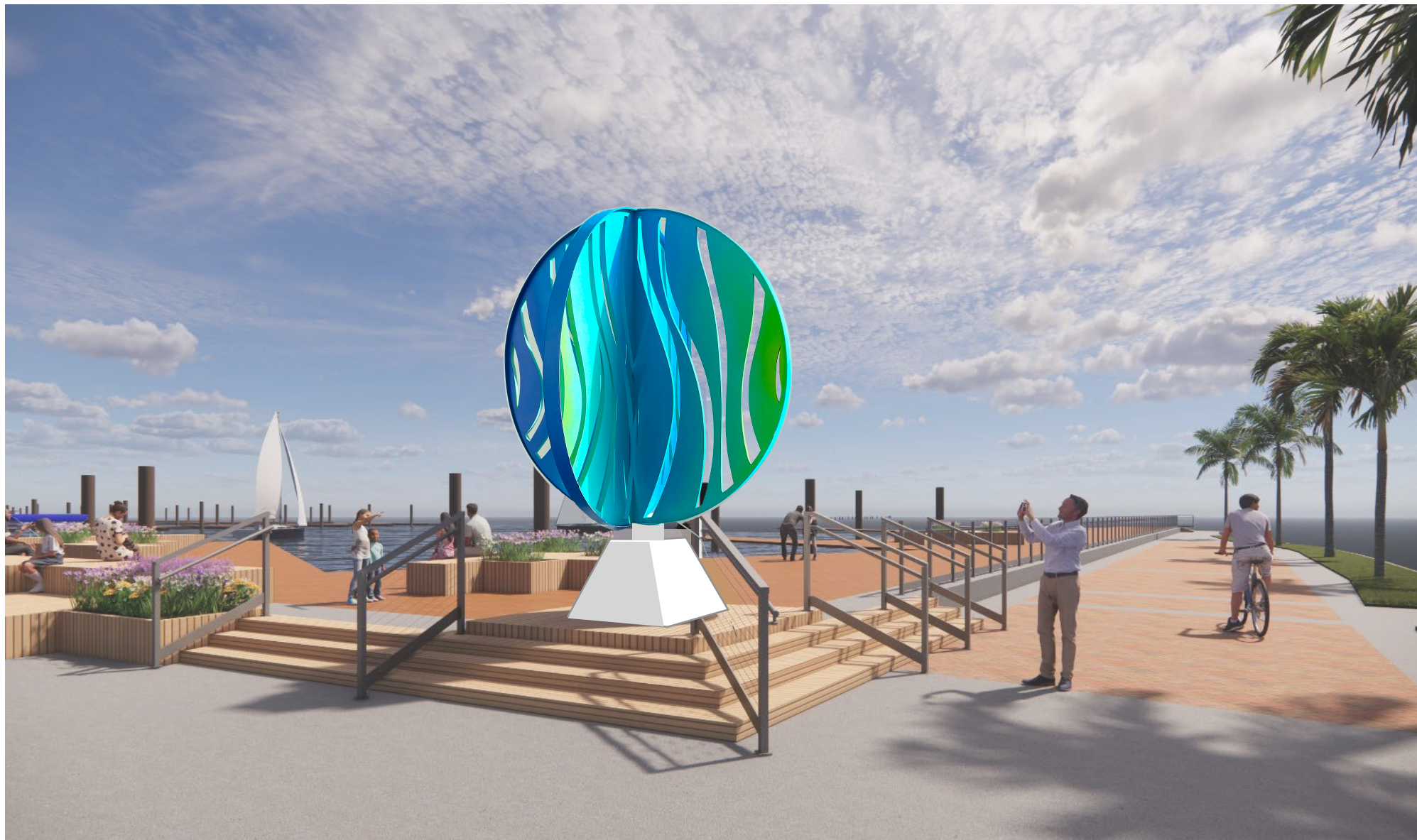
Cecilia Lueza Art Projects 2025



Cecilia Lueza Art Projects 2025



Cecilia Lueza Art Projects 2025



Cecilia Lueza Art Projects 2025

SCALE & DIMENSIONS

