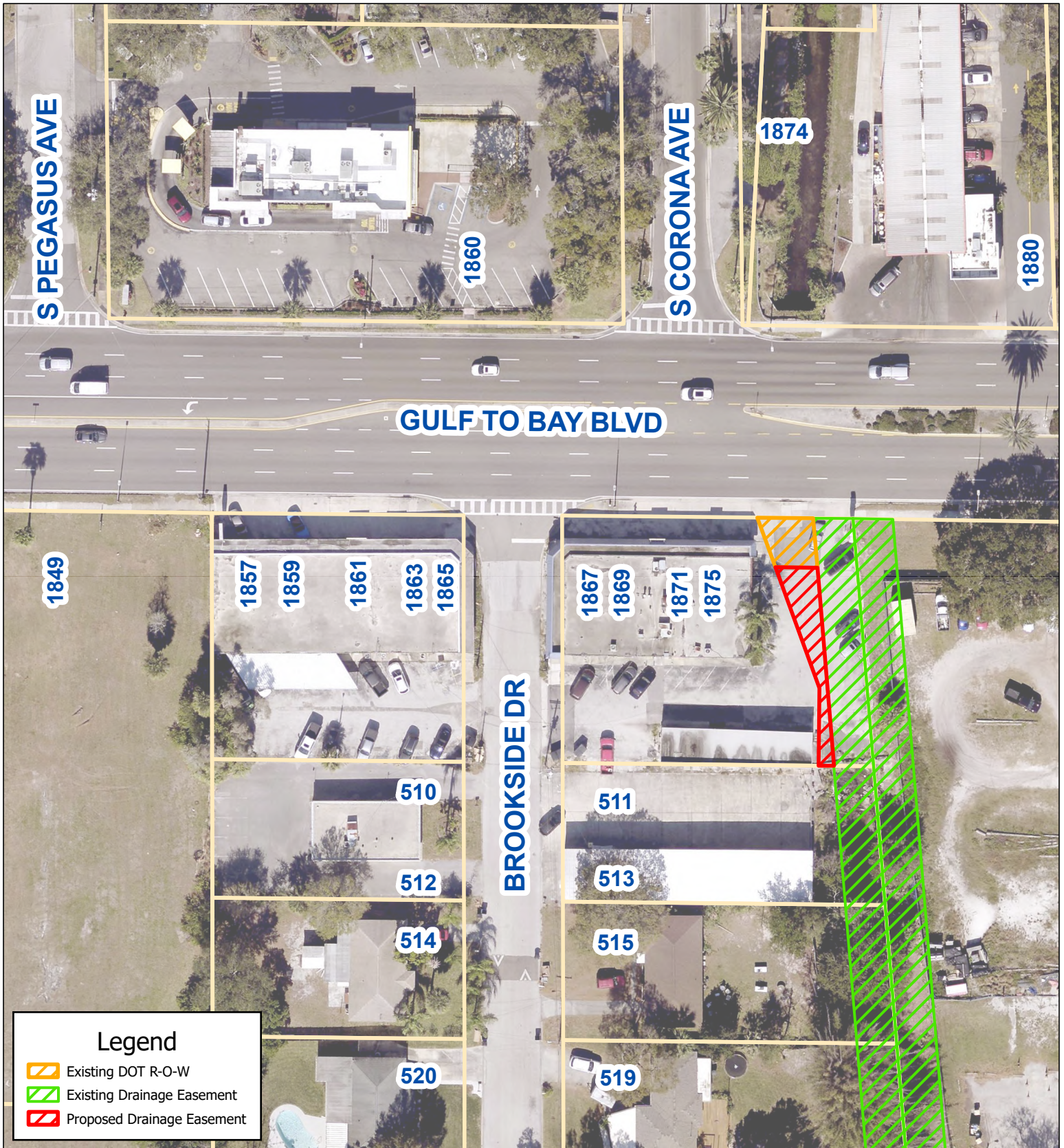





# AERIAL MAP



**Legend**

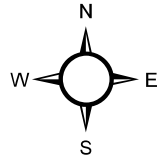
-  Existing DOT R-O-W
-  Existing Drainage Easement
-  Proposed Drainage Easement



**CLEARWATER**  
BRIGHT AND BEAUTIFUL • BAY TO BEACH

Prepared by:  
Department of Public Works - Engineering  
Geographic Technology Division  
100 S. Myrtle Ave., Clearwater, FL 33756  
Ph: (727)562-4750, Fax: (727)526-4755  
www.MyClearwater.com

## 1875 Gulf to Bay Blvd Proposed Drainage Easement Parcel Number: 13-29-15-12096-000-0340



Map Gen By: <b>KF</b>	Reviewed By: <b>RK</b>	Aerial Flown 2023	Date: <b>8/16/2023</b>	Page: 1 of 1
-----------------------	------------------------	-------------------	------------------------	--------------

Scale: **N.T.S.**