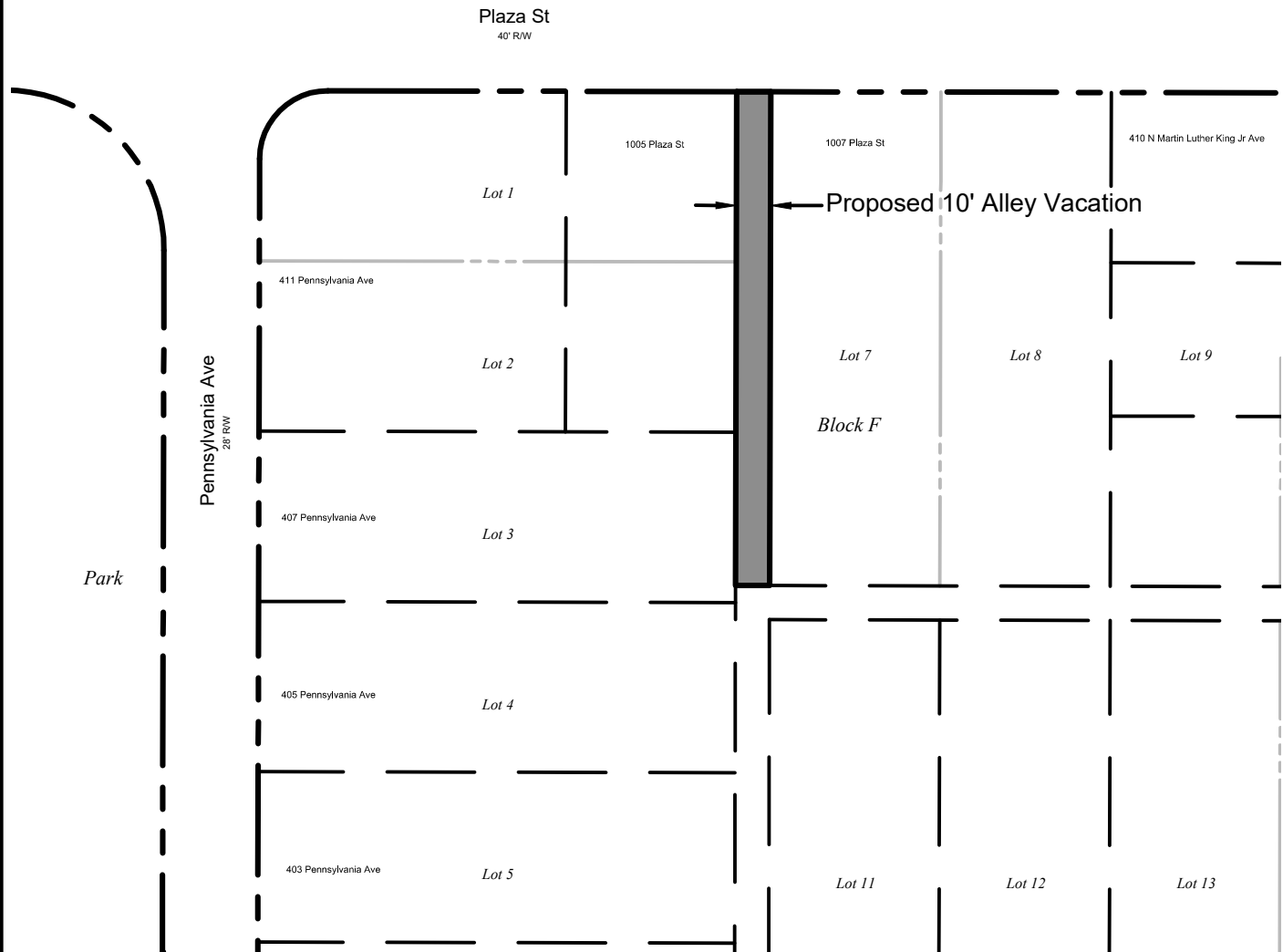


# Exhibit "A"

**HILLSBOROUGH PLAT 5, PAGE 53  
A CORRECTED PLAT OF THE CLEARWATER IMPROVEMENT COMPANY  
PLAZA PARK ADDITION**



**N.T.S.**



**Legal Description**

*This is not a survey*

**Proposed Alley Vacation**

That portion of a 10' Alley abutting the West lot line of Lot 7 in Block F of the Corrected Plat of Clearwater Improvement Co. Plaza Park Addition according to the map or plat thereof as recorded in Plat Book 5, Page 53 of the Public Records of Hillsborough County, Florida, of which Pinellas was formerly a part.

<b>CITY OF CLEARWATER</b> DEPARTMENT OF PUBLIC WORKS - ENGINEERING		<b>Proposed Alley Vacation</b>		DWG. NO. <b>2024-08</b>	SHEET <b>1 OF 1</b>
				DRAWN BY <b>KF</b>	CHECKED BY <b>TM</b>