



**CLEARWATER**  
BRIGHT AND BEAUTIFUL • BAY TO BEACH



moffatt & nichol

# CLEARWATER COMPREHENSIVE BOATING PLAN

January 21, 2016



# Introduction – Project Team

## City of Clearwater

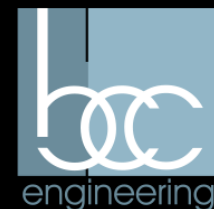
- Bill Morris – Director of Marine and Aviation
- Kyle Brotherton – Planning and Development



**CLEARWATER**  
BRIGHT AND BEAUTIFUL · BAY TO BEACH

## Consultants

- Mike Herrman - Moffatt & Nichol
- Chris Anuszkiewicz - Placemaker Design Studio
- Michael English - BCC Engineering



# Plan Objective

Activate the downtown waterfront by making Clearwater the premier boating destination in the region.



# Project Approach

- Analyze existing boating market
- Gather input from the boating public
- Inventory existing boating destinations
- Identify Clearwater needs
- Locate needed infrastructure for maximum benefit

# Clearwater Boating Market Conclusions

- Clearwater is a desirable boating area with high boat traffic
- More boat slips are desired near Clearwater
- Boating access is not restricted – there are many places for boating access and many boats that are looking for places to visit



# Comparable Boating Destinations

## Eastern Seaboard

- Annapolis
- Charleston
- Savannah

## Florida

- St. Petersburg
- Sarasota
- Naples
- St. Augustine
- Destin



# Boating Destination Needs

## Boats

- Location convenient to a lot of boats with good boating access
- Boat slips available for visitors
- Safe docks with basic services

## People

- Public comfort facilities
- Concentrated activity to generate interest – need boaters and non-boaters



# Typical Activity Generators

- Art
- Restaurants/bars
- Hotels
- Child-friendly outdoor attractions
- Views (from various heights)



# Existing City Facilities

- Clearwater Harbor Marina
- Clearwater Beach Marina
- Seminole Street Boat Launch
- Clearwater Beach Public Boat Ramp
- Clearwater Rec Center Public Docks
- Island Estates Public Docks
- Clearwater Sailing Center

## *City Boating Facilities*

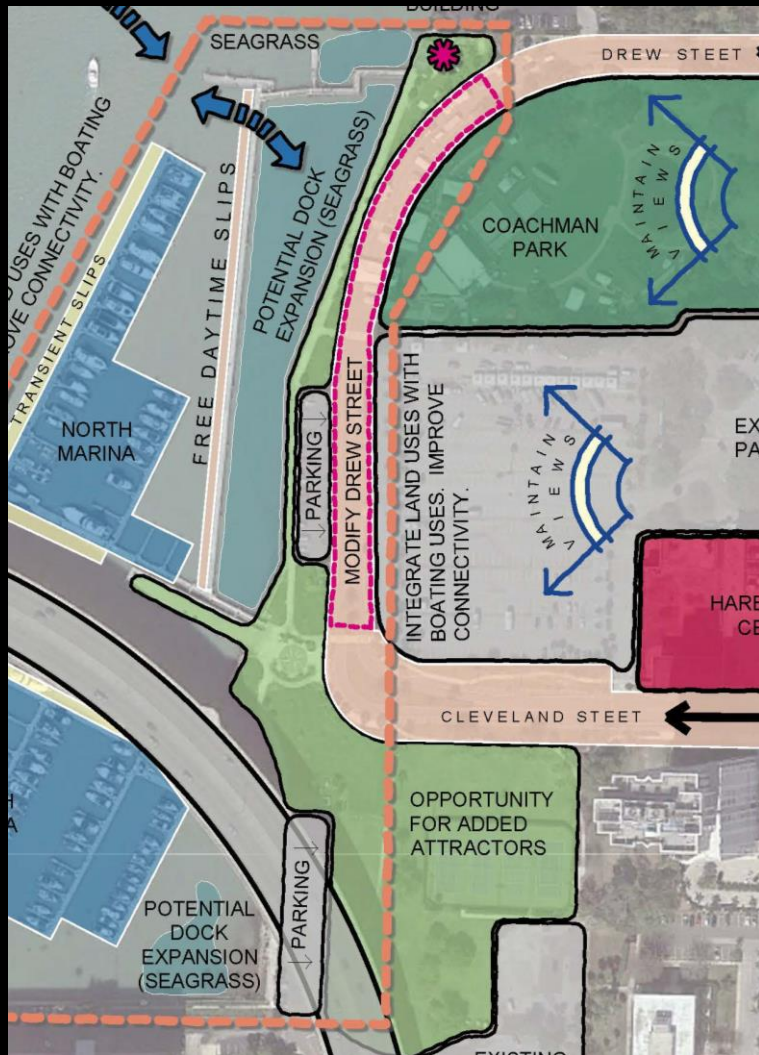


# Recommendations - Clearwater Harbor Marina

- Focus on maintaining a connection between land and water
- Improve boater experience so access is easy and secure
- Improve non-boater access to waterfront areas



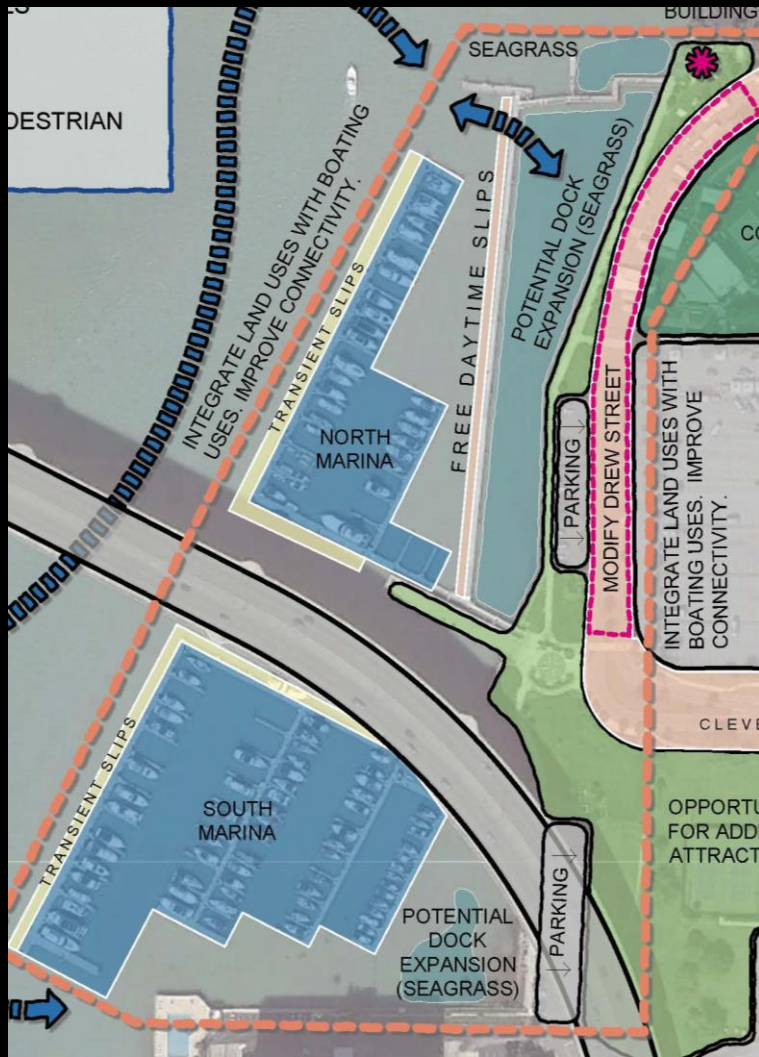
# Recommendations - Clearwater Harbor Marina



## Connect Land with Water

- Push back parking
- Modify Drew Street
- Design for views
- Waterfront attraction

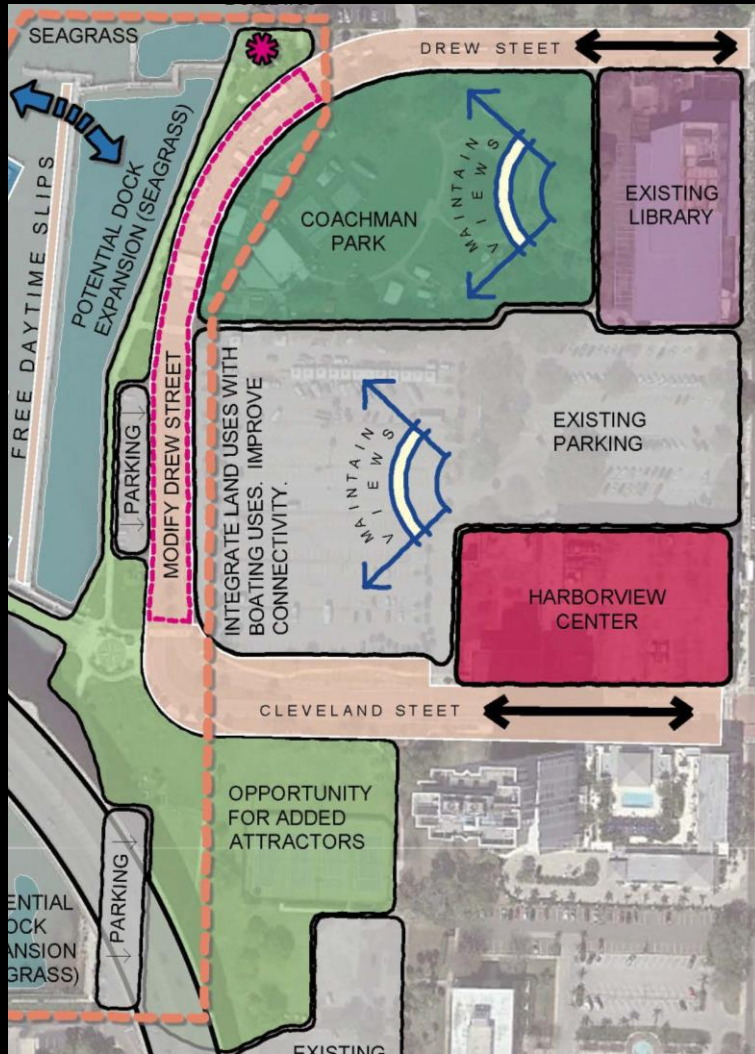
# Recommendations - Clearwater Harbor Marina



## Improve Boater Experience

- Add more docks
- Add a mooring field/dinghy dock
- Reduce distance to facilities

# Recommendations - Clearwater Harbor Marina

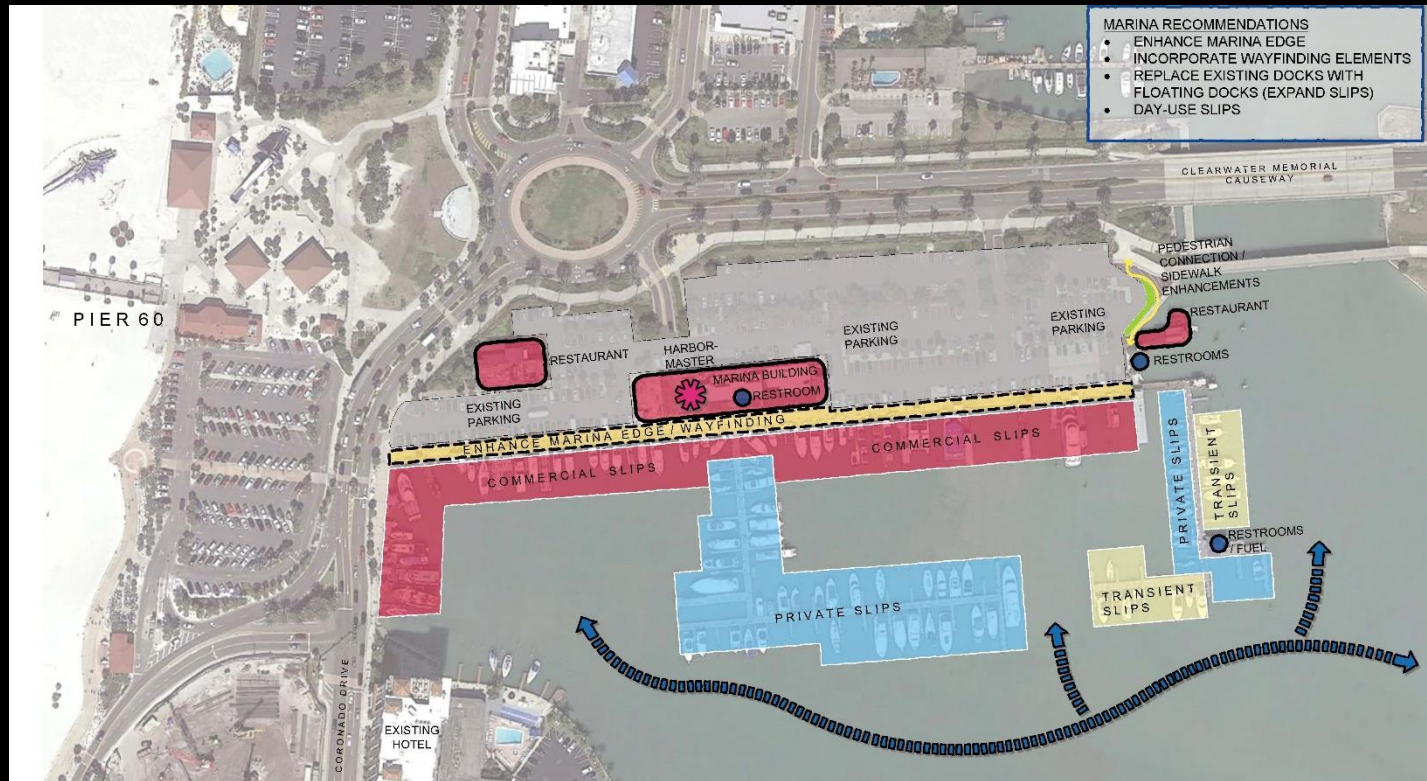


## Improve Non-Boater Experience

- Safe at night
- Lighting and art
- Wayfinding
- Public facilities

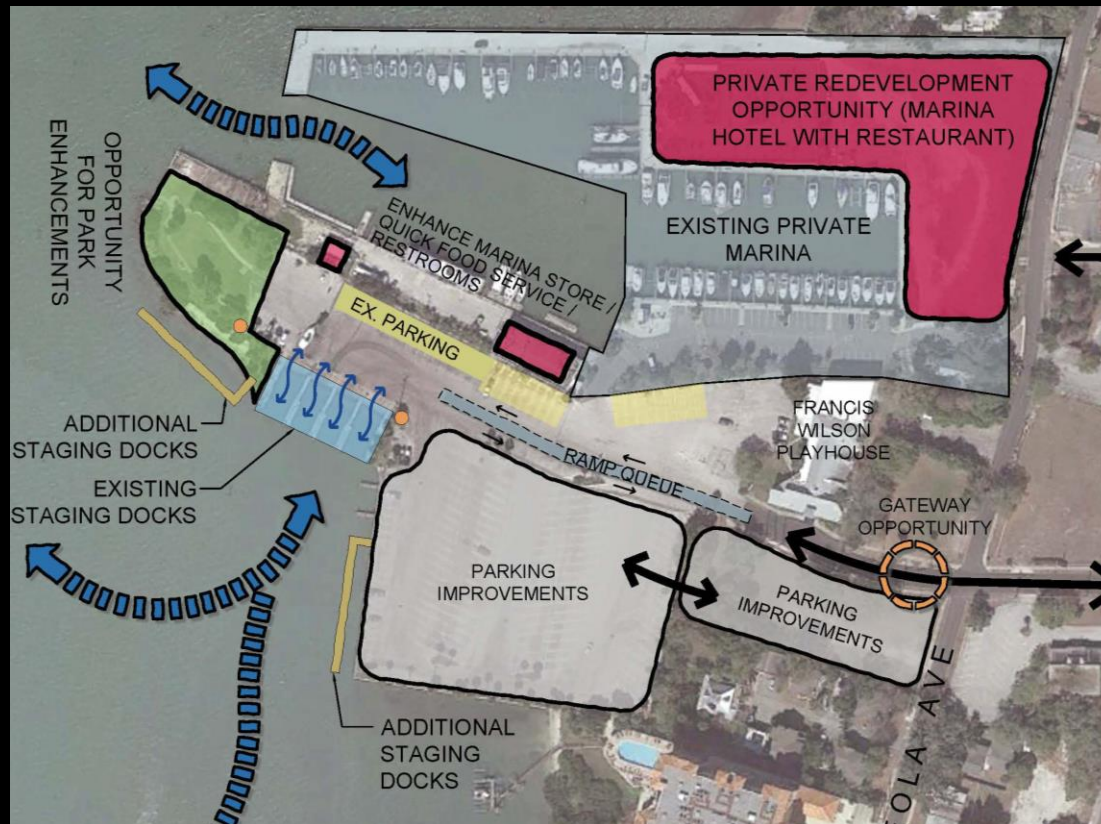
# Recommendations - Clearwater Beach Marina

- Increase pedestrian access along the waterfront
- Improve boater experience



# Recommendations - Seminole Street Boat Launch

- Maintain and enhance boating access
- Improve public access to the waterfront



# Regulatory Considerations

- Environmental - New docks need to avoid and minimize impacts to seagrass in the harbor
- Navigation - New docks need to avoid impacts to navigation in the ICWW channel
- Charter - Referendum needed for changes at Harbor Marina not explicitly authorized by City Charter



# Boating Infrastructure Planning Level Costs

- Harbor Marina
  - \$500,000 to \$1,000,000 for additional slips
  - \$500,000 to \$800,000 for mooring field and dock
- Beach Marina
  - \$10,000,000 to \$15,000,000 for upgraded docks
- Seminole St. Boat Launch
  - \$250,000 to \$500,000 for access docks

# Other Costs

- Public art and lighting
- Buildings for restaurant/hotel
- Sidewalk and greenspace modifications
- Parking lot and Drew Street modifications
- Wayfinding and public comfort facilities



# Near Term Recommendations

- Harbor Marina
  - Wayfinding and convenient public comfort facility
  - Enhance water taxi access
  - Create/enhance waterfront “promenade”
  - Lighting and additional/enhanced public art
- Beach Marina
  - Improved wayfinding and landscaping along waterfront
- Seminole Street Boat Launch
  - Park/greenspace upgrade
  - Wayfinding and pathways

# Conclusions

- Clearwater currently has the boating infrastructure to be a “boating destination”
- There are many boaters in the area – enough to support a boating destination
- Boaters seek activities on or near the water
- Add an attractor near the Harbor Marina and add an attractor at the Seminole St. Boat Launch
- Put public space (not cars) directly at the water’s edge
- Provide wayfinding and public comfort facilities



**CLEARWATER**  
BRIGHT AND BEAUTIFUL • BAY TO BEACH



moffatt & nichol

# CLEARWATER COMPREHENSIVE BOATING PLAN

