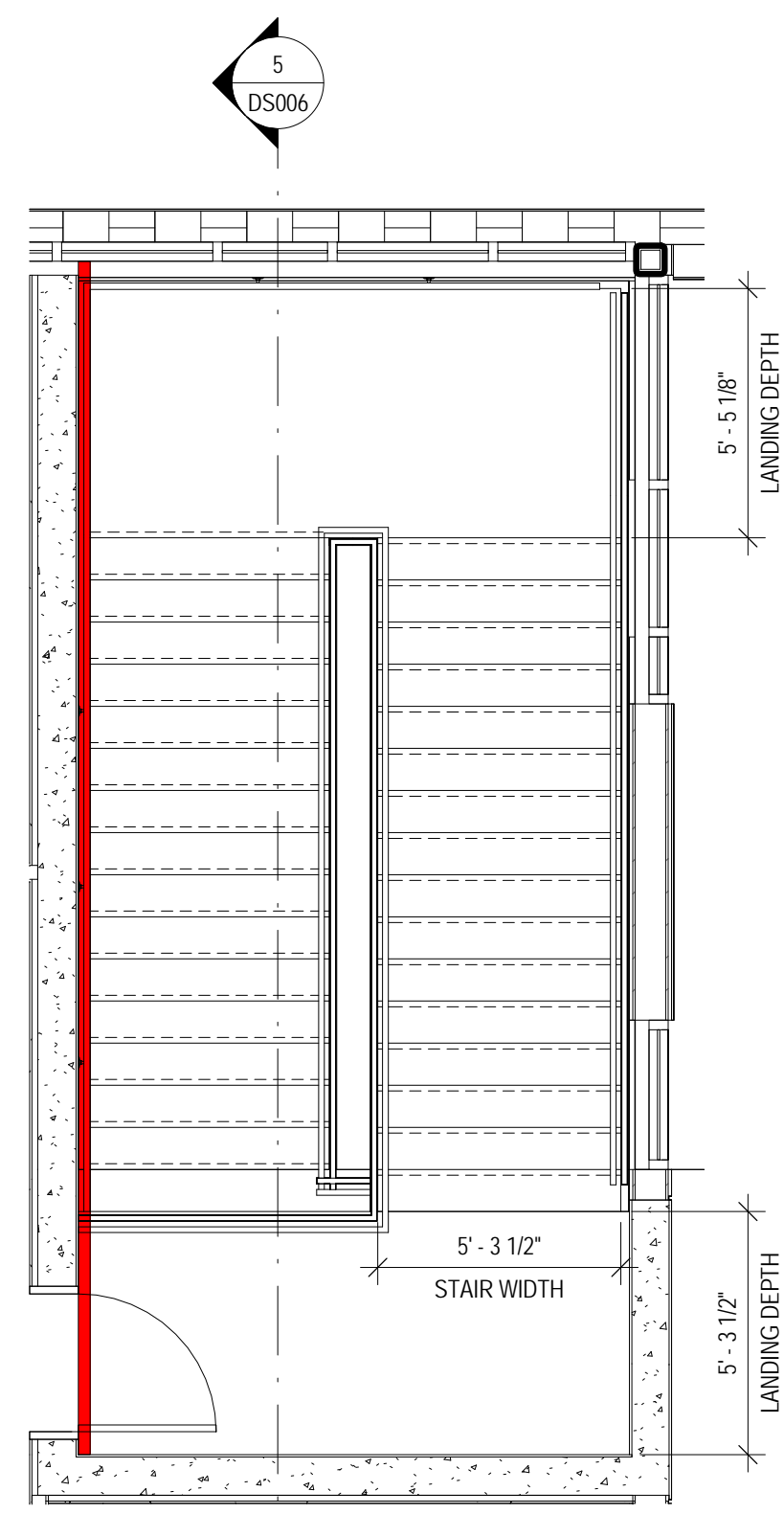
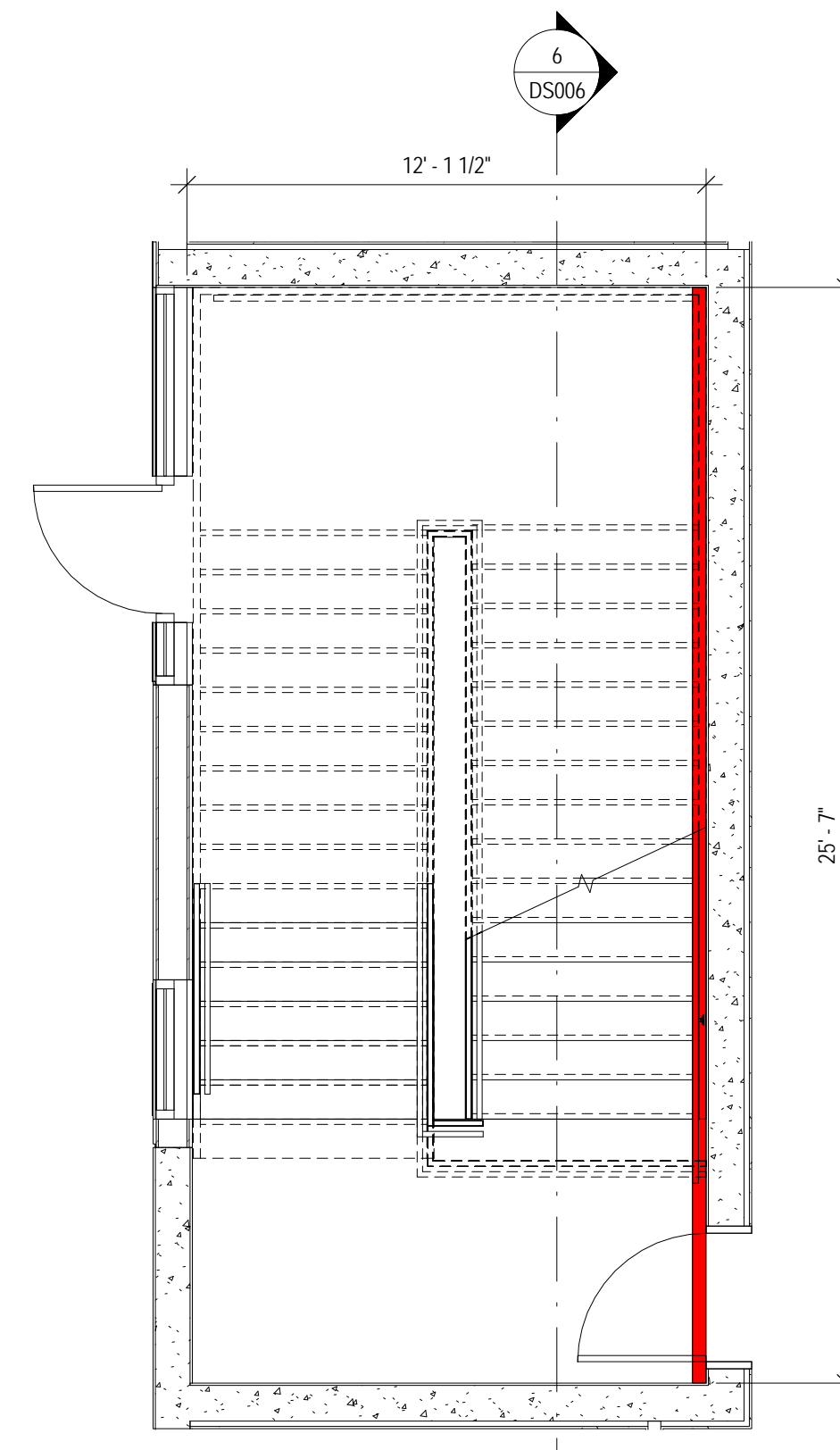


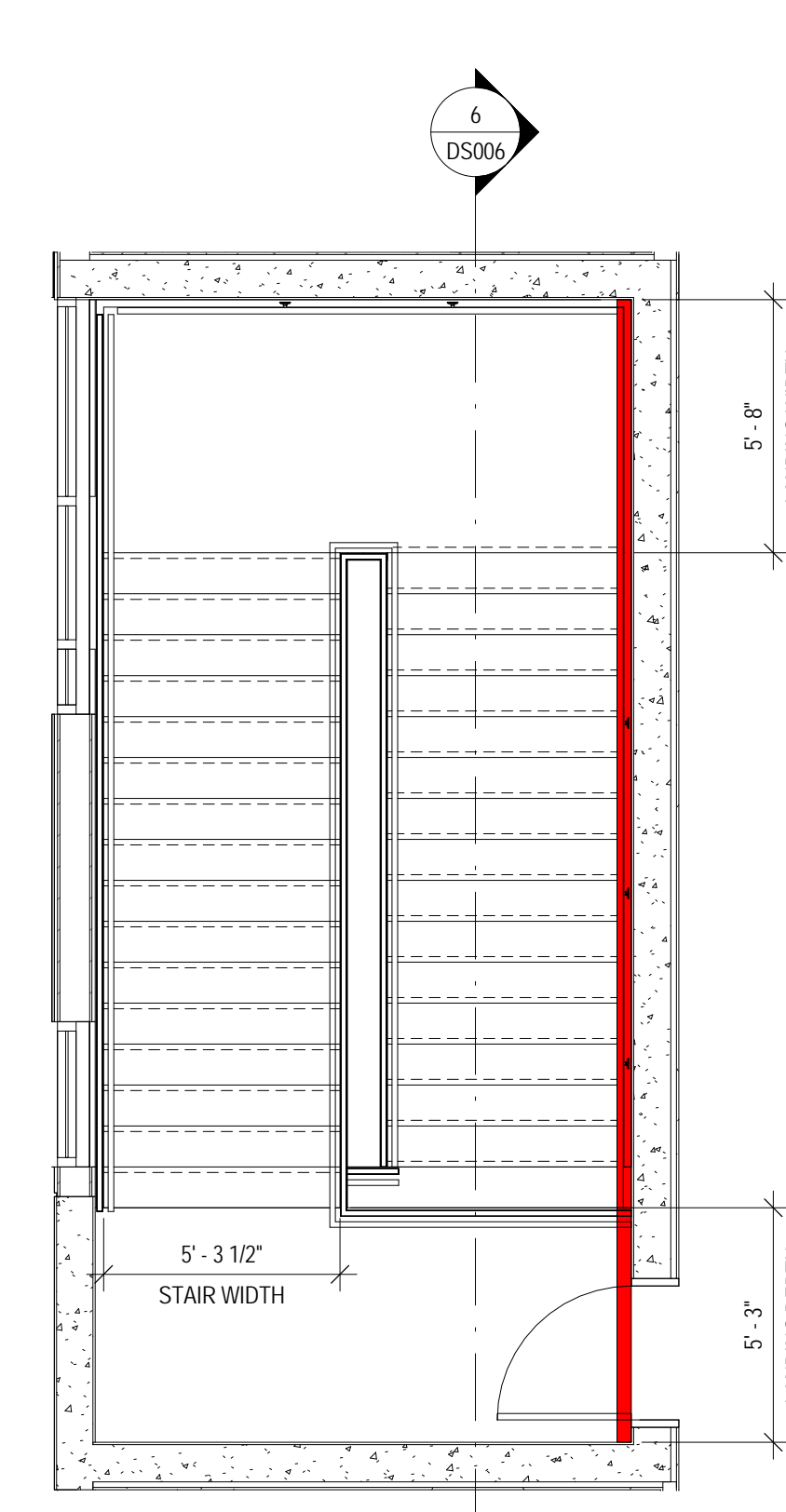
1 SOUTH STAIRWELL - LEVEL 1 - ENLARGED PLAN  
1/4" = 1'-0"



2 SOUTH STAIRWELL - LEVEL 2 - ENLARGED PLAN  
1/4" = 1'-0"



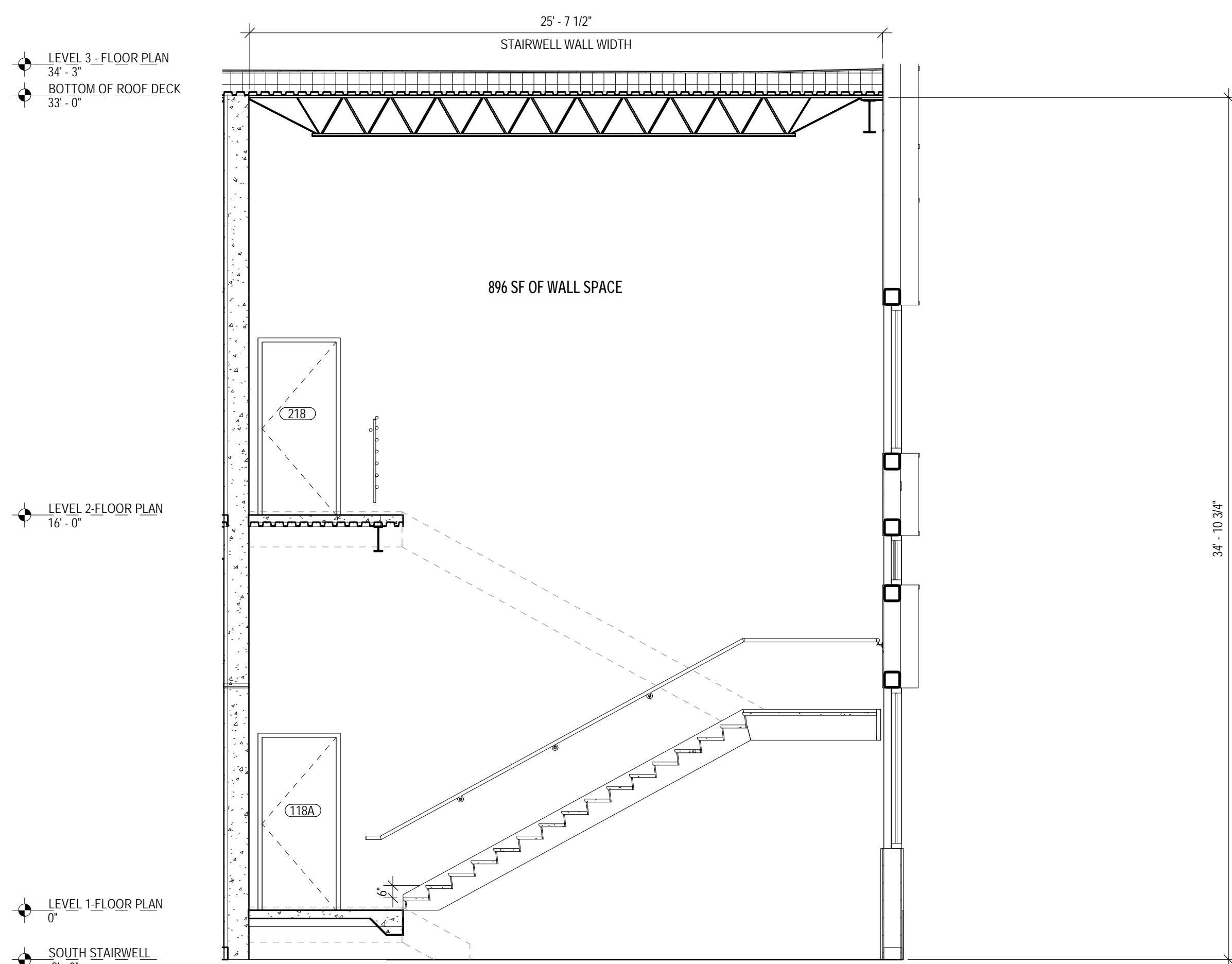
3 NORTH STAIRWELL - LEVEL 1 - ENLARGED PLAN  
1/4" = 1'-0"



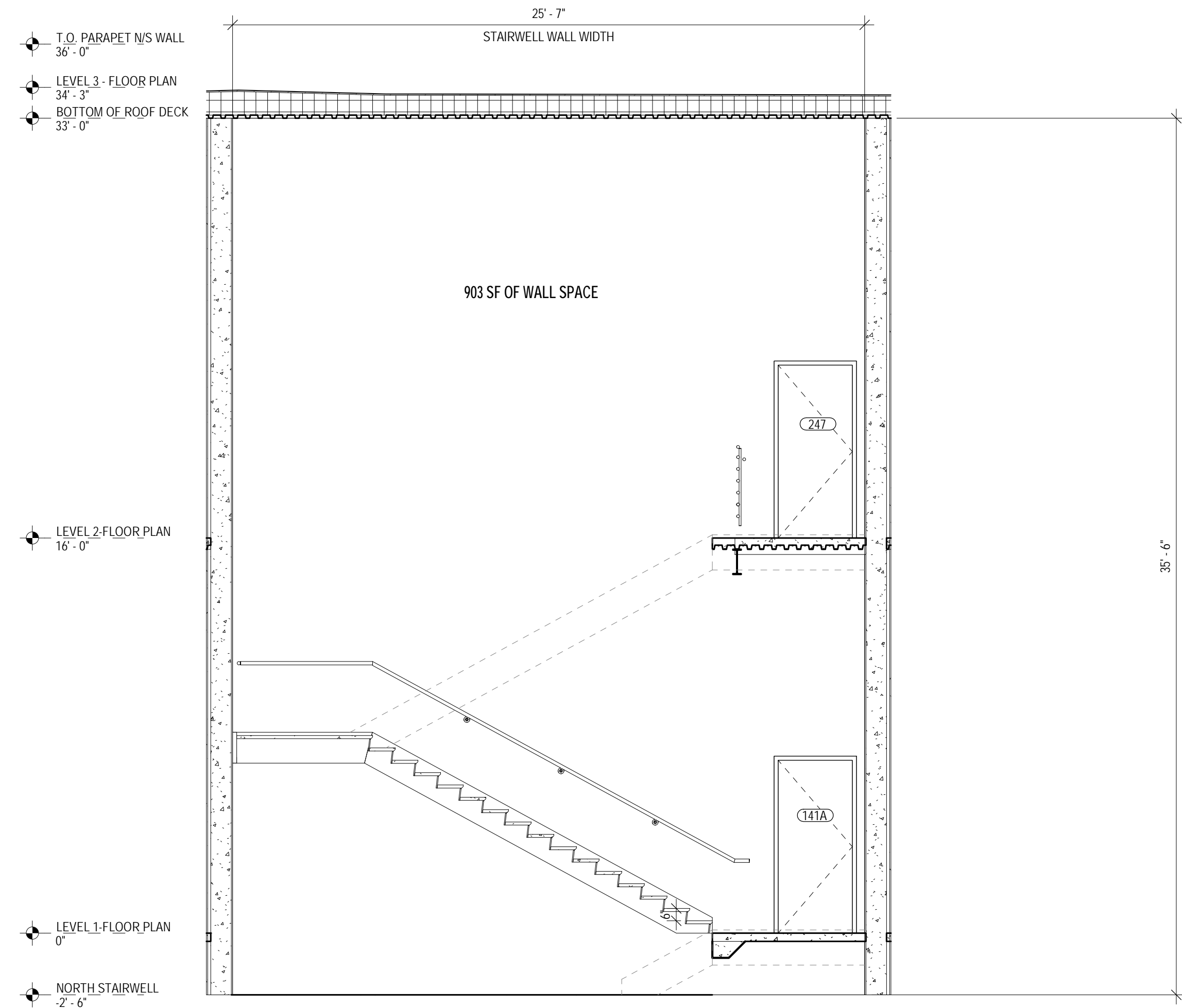
4 NORTH STAIRWELL - LEVEL 2 - ENLARGED PLAN  
1/4" = 1'-0"

**STAIRWELL MURAL PARAMETERS:**

1. 896 SF OF ALLOWABLE MURAL WALL AREA FOR SOUTH STAIRWELL.
2. 903 SF OF ALLOWABLE MURAL WALL AREA FOR NORTH STAIRWELL.
4. THE MURAL SHOULD EMBODY CLEARWATER'S COASTAL IDENTITY THROUGH THE USE OF THE CITY'S LOGO COLORS.



5 SOUTH STAIRWELL - NORTH SECTION  
1/4" = 1'-0"



6 NORTH STAIRWELL - SOUTH SECTION  
1/4" = 1'-0"

PERMIT SET  
7/5/24

THE ARCHITECT'S COMMON LAW COPYRIGHT AND OTHER PROPERTY RIGHTS ARE HEREBY RESERVED IN THE IDEAS, DESIGN, PLANS, DRAWINGS, AND SPECIFICATIONS PRODUCED BY THE ARCHITECT. THESE IDEAS, DESIGN, PLANS, DRAWINGS, AND SPECIFICATIONS SHALL NOT BE REPRODUCED OR COMPILED IN ANY MANNER NOR ASSIGNED TO ANY THIRD PARTY WITHOUT FIRST OBTAINING THE EXPRESS WRITTEN PERMISSION OF THE ARCHITECT. CONSENT IS HEREBY GRANTED TO GOVERNMENTAL AGENCIES TO REPRODUCE THE CONSTRUCTION DRAWINGS IN COMPLIANCE WITH THE STATE STATUTES. TO THE BEST OF THE ARCHITECT'S ENGINEERING KNOWLEDGE, THE PLANS AND SPECIFICATIONS COMPLY WITH THE APPLICABLE MINIMUM BUILDING CODES AND THE APPLICABLE THE SAFETY STANDARDS AS DETERMINED BY THE LOCAL AUTHORITY IN ACCORDANCE WITH CHAPTERS 553 AND 633 OF THE FLORIDA STATUTES.

**Wannemacher Jensen Architects, Inc.**  
132 Mirror Lake Drive North, Unit 301  
St. Petersburg, Florida 33701-3214  
(727) 822-5566 | www.wjarc.com | AR94244  
©Wannemacher Jensen Architects, Inc.



REVISION	BY	DATE

CITY OF CLEARWATER, FLORIDA  
ENGINEERING DEPARTMENT  
100 S MYRTLE AVE  
CLEARWATER, FL 33756

CLEARWATER CITY HALL

ARTIST OPEN CALL - STAIRWELL PLANS AND SECTIONS

CITY PROJECT NO.: 22-0019-EN	DESIGNED BY: WJA	SHEET REFERENCE NO.:
CITY PLAN SET NO.: 2022011	DRAWN BY:	DS006
MAN JOB NO.: 2240	CHECKED BY:	
DATE DRAWN:	REVIEWED BY:	
SUBMITTED BY: WJ ARCHITECTS		INDEX: OF



NORTH ELEVATION



SOUTH ELEVATION

**BID SET**  
12/15/23  
FOR REFERENCE ONLY, NOT TO BE USED FOR  
CONSTRUCTION

THE ARCHITECT'S COMMON LAW COPYRIGHT AND OTHER PROPERTY RIGHTS ARE HEREBY RESERVED IN THE IDEAS, DESIGN, PLANS, DRAWINGS, AND SPECIFICATIONS PRODUCED BY THE ARCHITECT. THESE IDEAS, DESIGN, PLANS, DRAWINGS, AND SPECIFICATIONS SHALL NOT BE REPRODUCED OR COMPILED IN ANY MANNER NOR ASSIGNED TO ANY THIRD PARTY WITHOUT FIRST OBTAINING THE EXPRESS WRITTEN PERMISSION OF THE ARCHITECT. CONSENT IS HEREBY GRANTED TO GOVERNMENTAL AGENCIES TO REPRODUCE THE CONSTRUCTION DRAWINGS IN COMPLIANCE WITH THE SCALE STATUTES. TO THE BEST OF THE ARCHITECT'S KNOWLEDGE, THE PLANS AND SPECIFICATIONS COMPLY WITH THE APPLICABLE MINIMUM BUILDING CODES AND THE APPLICABLE THE SAFETY STANDARDS AS DETERMINED BY THE LOCAL AUTHORITY IN ACCORDANCE WITH CHAPTERS 553 AND 633 OF THE FLORIDA STATUTES.

**Wannemacher Jensen Architects, Inc.**  
132 Mirror Lake Drive North, Unit 301  
St. Petersburg, Florida 33701-3214  
(727) 822-5566 | www.wjarc.com | AR94244  
©Wannemacher Jensen Architects, Inc.



REVISION	BY	DATE

CITY OF CLEARWATER, FLORIDA  
ENGINEERING DEPARTMENT  
100 S MYRTLE AVE  
CLEARWATER, FL 33756

CLEARWATER CITY HALL  
ARTIST OPEN CALL - STAIRWELL VIEWS

CITY PROJECT NO.: 22-0019-EN	DESIGNED BY: WJA	SHEET REFERENCE NO.: DS007
CITY PLAN SET NO.: 2022011	DRAWN BY:	
MAN JOB NO.: 2240	CHECKED BY:	INDEX: OF
DATE DRAWN:	REVIEWED BY:	
SUBMITTED BY: WJ ARCHITECTS		