

North Beach Stormwater Update



CLEARWATER
BRIGHT AND BEAUTIFUL • BAY TO BEACH

100 S. Myrtle Ave. | Clearwater, FL 33756
www.myclearwater.com

IMMEDIATE ACTIONS

INSPECTIONS & CLEANINGS

- PWD is conducting detailed inspections & regular cleanings of entire system.

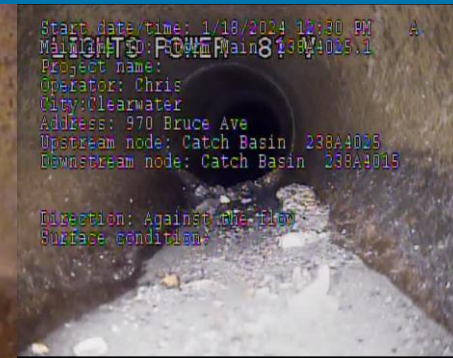
Concrete



Pool Debris



Landscape Shells



Illicit discharge: Call
(727) 562-4950

Help Us Reduce Costs: Vactor Truck-\$750k; Camera Truck-\$500k

SHORT & MID-TERM ACTIONS

SHORT-TERM ACTIONS (2-6 MONTHS)

- Install temporary pumps at high priority outfalls to pump water when system is inundated.
 - Have adjusted pump locations and operations based on data collecting. This will help in permanent lift station design efforts.
- Utilities adjustments on potable water flushing operations.
 - Public Utilities working on adjustments to their processes, flows and potential locations to help reduce impacts

SHORT & MID-TERM ACTIONS

MID-TERM ACTIONS (1-3 YEARS)

- Investigating infill of seawall where weir is located near Bruce & Bay Esplanade.
 - Temporarily infilled. Permanent infill still likely. Continuing to monitor surface flows and need.
- Construct 3-4 permanent lift stations to replace temporary pumps. Power install might increase final completion timeline.
 - Working on engineer work order now. Anticipate bringing to Council in April or May.
- Improved erosion and sediment control compliance from commercial contractors working in area.
 - Budget add for E&S inspectors.

LONG-TERM ACTIONS

MASTER PLAN IMPLEMENTATION (3-7 YEARS)

- Full replacement of existing stormwater system
 - Increase pipe sizes RFQ being prepared
 - Additional lift stations
 - Evaluate road drainage slopes, need for curb/gutter, &/or need for additional inlets

ORDNANCE INVESTIGATIONS

- Seawall Elevations Design work order approved

HOMEOWNER ENHANCEMENTS

- Resiliency improvements such as increased finish floor elevations, living shoreline, etc.

IMPROVEMENTS

IMPROVEMENT EFFORTS

- Evaluation of potable water flushing operations and locations.
- Erosion & sediment control inspectors- reduce debris & contaminants into system.
 - Requesting dedicated inspectors to help reduce debris in storm system
- Assess PWD in-house & contractor capabilities to ensure required capabilities exist to meet requirements.
 - Maintenance contract presented to Council tonight
 - Additional capabilities being discussed

Questions?



**HIGH PERFORMING
GOVERNMENT**



**ECONOMIC & HOUSING
OPPORTUNITY**



**COMMUNITY
WELL-BEING**



**ENVIRONMENTAL
STEWARDSHIP**



**SUPERIOR
PUBLIC SERVICE**