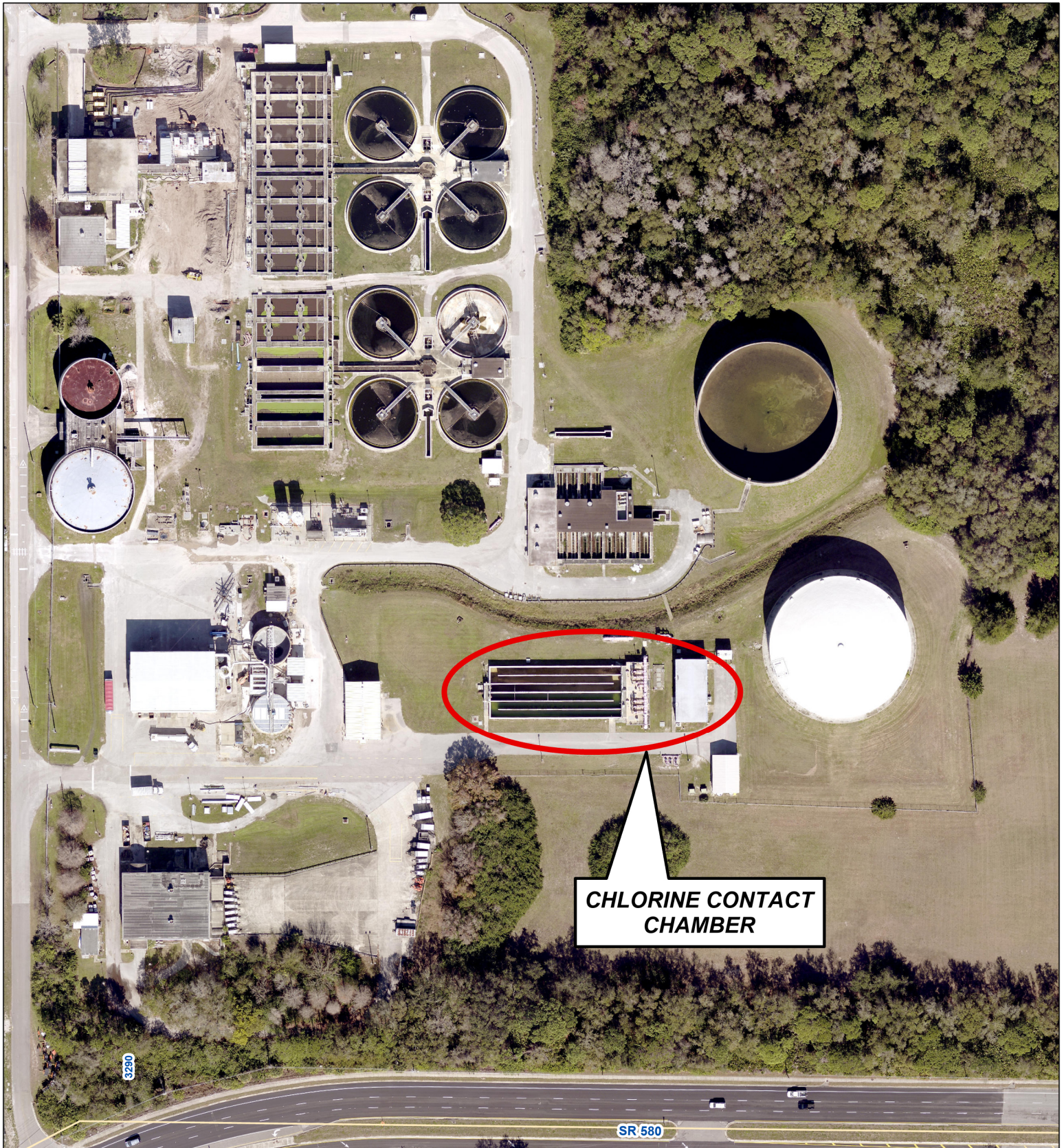


AERIAL MAP

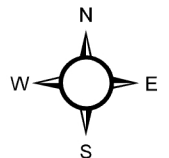


**CHLORINE CONTACT
CHAMBER**



Prepared by:
Department of Public Works - Engineering
Geographic Technology Division
100 S. Myrtle Ave. Clearwater, FL 33756
Ph: (727)562-4750, Fax: (727)526-4755
www.MyClearwater.com

Northeast WRF Chlorine Contact Chamber Solar Energy Project Project Number: 24-0039-UT



Scale: N.T.S.

Map Gen By: MD

Reviewed By: RP

Aerial Flown 2023

Date: 10/28/2024

Page: 1 of 1