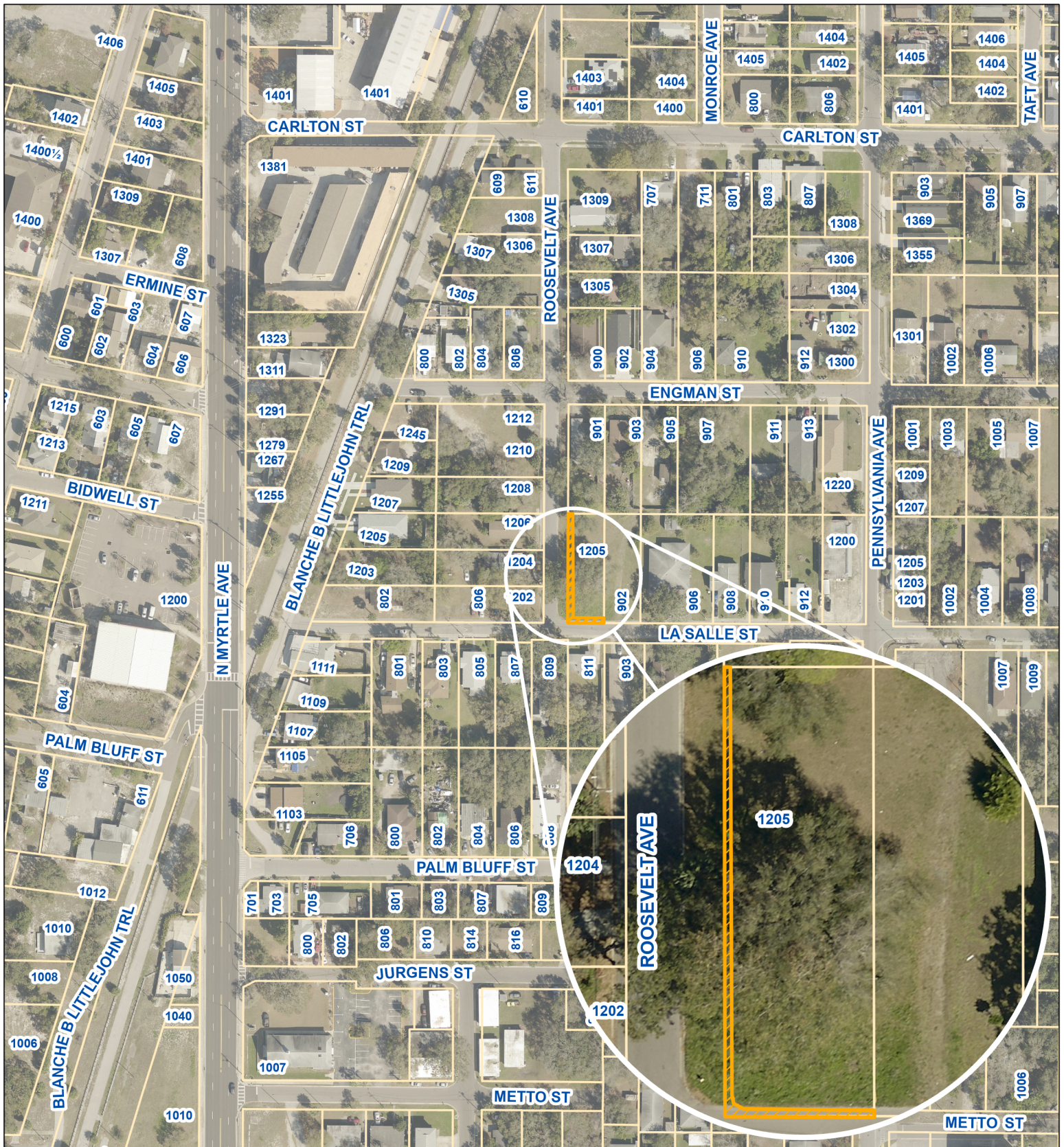
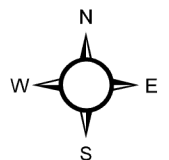


AERIAL MAP



Prepared by:
Department of Public Works - Engineering
Geographic Technology Division
100 S. Myrtle Ave, Clearwater, FL 33756
Ph: (727)562-4750, Fax: (727)526-4755
www.Myclearwater.com

Sidewalk and Public Utility Easement 1205 Roosevelt Ave



Scale: N.T.S.

Map Gen By: **KF**

Reviewed By: **TM**

Aerial Flown 2021

Date: **3/29/2023**

Page: 1 of 1