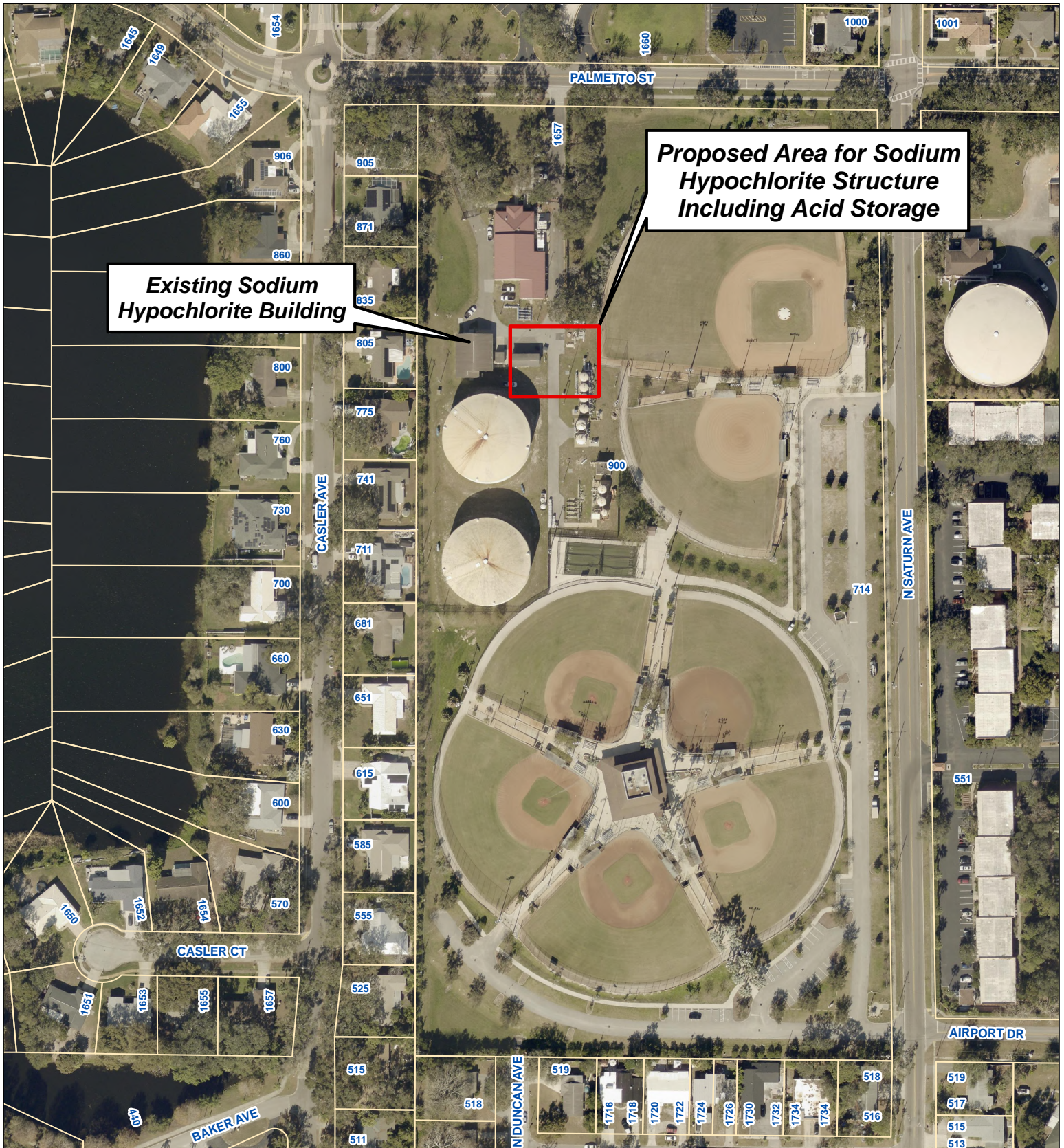


AERIAL MAP



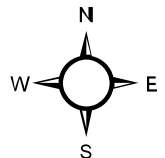
Existing Sodium Hypochlorite Building

Proposed Area for Sodium Hypochlorite Structure Including Acid Storage



Prepared by:
 Department of Public Works - Engineering
 Geographic Technology Division
 100 S. Myrtle Ave. Clearwater, FL 33756
 Ph: (727)562-4750, Fax: (727)526-4755
 www.MyClearwater.com

RO1 Acid Storage and Feed System Project Number: 26-0010-UT



Map Gen By: MD

Reviewed By: AT

Aerial Flown 2025

Date: 3/9/2026

Page: 1 of 1

Scale: N.T.S.