

Mr. David Habib
Yo Mama's Foods Co.
1175 Eldridge Avenue
Clearwater FL 33765

Yo Mama's Warehouse

17 May 2024

Invoice 01

24-211

Per Agreement

Document Transfer	100% Complete	\$ 450.00
Schematic Design	100% Complete	1,150.00
Design Development	50% Complete	700.00
Construction Documents	25% Complete	575.00

Total Amount Due

\$ 2,875.00

Thank you for your attention.

Stephen R. Fowler, AIA, NCARB

SRF:mf

■ FOWLER ASSOCIATES ARCHITECTS, INC. ■ AA001665 ■

■ 1421 COURT STREET ■ CLEARWATER, FLORIDA 33756 ■ 727-449-2021 ■



August 15, 2024

David Hibib
Yo Momma Foods
1125 Eldridge St.
Clearwater, FL

Re: Office Build-Out South West Corner

David,

Davis Construction Enterprises, Inc. Proposes to Furnish Materials, Labor and Equipment to complete the following based on our Interpretation of the (1) page drawing for the sum of **Two Hundred Thirty Thousand, Seven Hundred Dollars \$230,700.00** (Subject to Final for Construction Drawings):

1. Permit
2. Frames & Glass
3. Interior Doors and Hardware
4. Acoustical Grid & Tile at office only. Standard Revealed edge
5. Masonry Infill
6. Electrical
7. Plumbing
8. HVAC
9. Painting
10. Drywall & Finish
11. Demo Overhead Door
12. New Concrete Landing & Stairs at North end wall
13. 2 Line Aluminum Guard/Handrails
14. Job Oversight
15. Overhead & Profit
16. Trash Removal

Exclusions:

1. Ansil Fire Protection System
2. Ceiling at open areas
3. Mechanical Ventilation, exhaust
4. Appliances
5. Furring & drywall for exterior walls
6. Floor finishes
7. Fire Alarm

- Payment terms to be agreed prior to start of work
- Subject to Davis Construction Enterprises, Inc. workload

Davis Construction Enterprises, Inc. appreciates the opportunity to provide you with this cost proposal and looks forward to working with you on this and future projects.

Sincerely,
DAVIS CONSTRUCTION ENTERPRISES, INC.

Mark J. Davis
President

P24-047



DESIGN CRITERIA

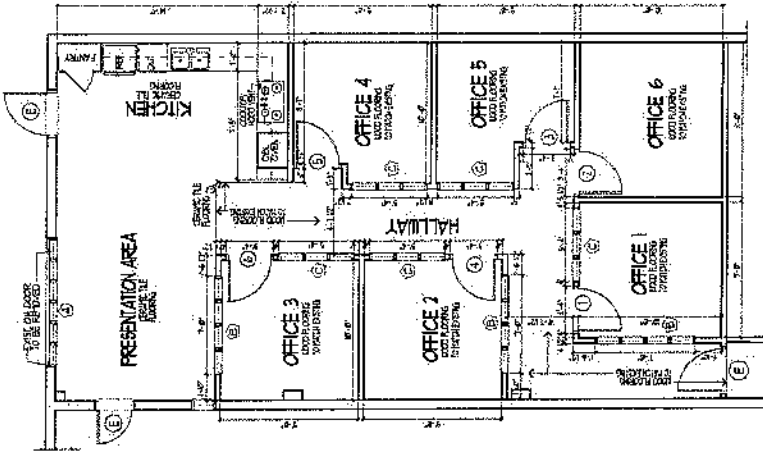
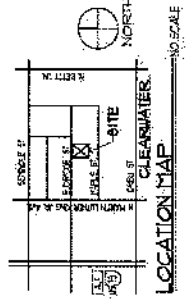
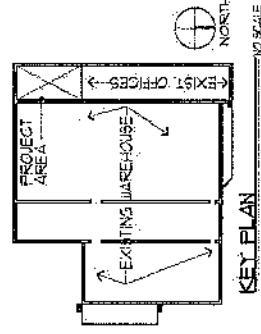
- (REF. SEC. 2023, BUSINESS 1)
- OCCUPANCY TYPE: (1) BUSINESS CHILD MEDICAL CENTER
- CONSTRUCTION TYPE: (1) 5 UNREINFORCED
- ALLOWABLE BUILDING HEIGHT: UNLIMITED
- EXISTING BUILDING HEIGHT: 3 STORES
- BASIC WIND SPEED: 145 mph
- WIND IMPORTANCE FACTOR: 1.0
- BUILDING CATEGORY: SACLORED, LOW-RISE BUILDING
- SEISMIC DESIGN CATEGORY: SIMPLE D-DISSIPATION
- WIND EXPOSURE CATEGORY: 10
- WIND LOADS DETERMINED BY: FBC 2023 CHAPTER 6
- THE FLORIDA FIRE PREVENTION CODE 2021
- NFP A. 101 LIFE SAFETY CODE 2017 EDITION

THIS PROJECT IS REFERENCED TO THE FOLLOWING:

- NFP A. 241 2013 EDITION
- NFP A. 101 LIFE SAFETY CODE 2017 EDITION
- THIS DESIGN COMPLES WITH THE FOLLOWING:
- 2023 Florida Building Codes
- 2018 Edition 2013 Florida Building Codes - Building
- 2018 Edition 2013 Florida Building Codes - Residential
- 2018 Edition 2013 Florida Building Codes - Energy
- 2018 Edition 2013 Florida Building Codes - Test Protocol
- 2018 Edition 2013 Florida Building Codes - Plumbing
- 2018 Edition 2013 Florida Building Codes - Electrical
- 2018 Edition 2013 Florida Building Codes - Existing Building
- 2018 Edition 2013 Florida Building Codes - Fuel Gas
- 2018 Edition 2013 Florida Building Codes - Accessibility
- 2018 Edition 2013 Florida Fire Prevention Code
- NEC 2020 National Electric Code - NFPA 70
- Florida Building Guidelines
- CITY OF CLEARWATER FLORIDA LAND DEVELOPMENT
- CODE 4 NATIONAL ELECTRIC CODE 2017
- TO THE BEST OF OUR KNOWLEDGE AND BELIEF:

PROJECT SCOPE

- INTERIOR WAREHOUSE AREA REMODEL TO OFFICES
- AREAS IMPACTED:
- ARCHITECTURAL
- ELECTRICAL
- MECHANICAL
- PLUMBING



Floor Plan

SCALE: 1/8" = 1'-0"

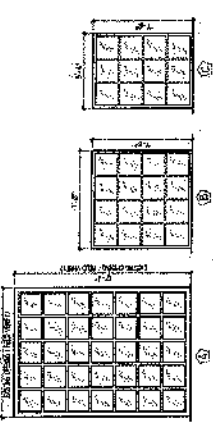
Legend:

- EXISTING DOOR/AREA TO REMAIN
- EXISTING CONSTRUCTION TO REMAIN
- SYSTEMS CONTRIBUTION TO BE REMOVED
- PERSONAL CONTRIBUTION
- 1 1/2" X 6" X 6" X 6" C.C.
- REMOVE THE 2" X 4" X 8" AT ALL DOOR LOCATIONS

AREA TABULATION

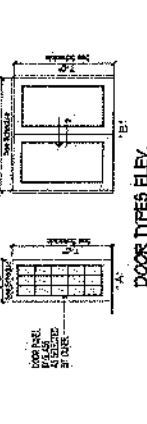
WINDOW SCHEDULE

NO.	TYPE	FINISH	GLASS	OPERATION	SCREEN	MARKING
A	GLASS	1/2" CLEAR	1/2" CLEAR	SLIDING	ALUMINUM	1/2" CLEAR
B	GLASS	1/2" CLEAR	1/2" CLEAR	SLIDING	ALUMINUM	1/2" CLEAR
C	GLASS	1/2" CLEAR	1/2" CLEAR	SLIDING	ALUMINUM	1/2" CLEAR



DOOR SCHEDULE

NO.	TYPE	FINISH	OPERATION	MARKING
A	GLASS	1/2" CLEAR	SLIDING	ALUMINUM
B	GLASS	1/2" CLEAR	SLIDING	ALUMINUM



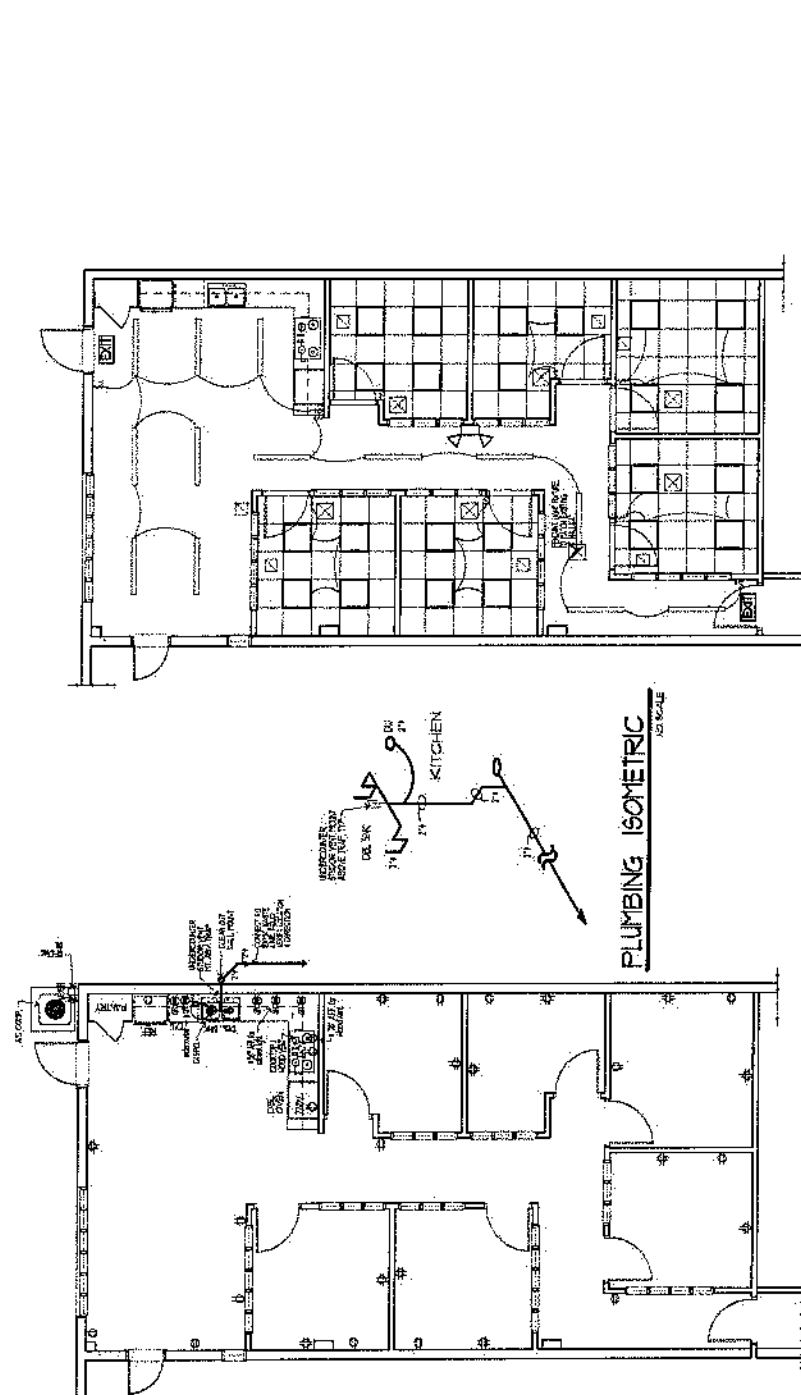
ROOF FINISH SCHEDULE

NO.	FLOOR	BASE	WALLS	CEILING	RETURN
1	HALLWAY	1/2" GYP	1/2" GYP	1/2" GYP	1/2" GYP
2	OFFICE 1	1/2" GYP	1/2" GYP	1/2" GYP	1/2" GYP
3	OFFICE 2	1/2" GYP	1/2" GYP	1/2" GYP	1/2" GYP
4	OFFICE 3	1/2" GYP	1/2" GYP	1/2" GYP	1/2" GYP
5	OFFICE 4	1/2" GYP	1/2" GYP	1/2" GYP	1/2" GYP
6	OFFICE 5	1/2" GYP	1/2" GYP	1/2" GYP	1/2" GYP
7	OFFICE 6	1/2" GYP	1/2" GYP	1/2" GYP	1/2" GYP
8	PRESENTATION AREA	1/2" GYP	1/2" GYP	1/2" GYP	1/2" GYP

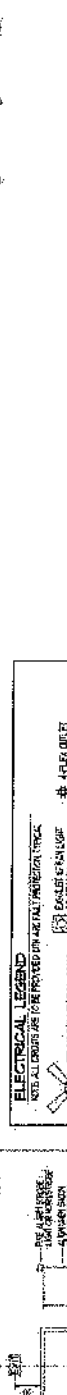
POWELL ASSOCIATES ARCHITECTS, INC.
 195 E. Bay Street, Suite 1000, Clearwater, FL 34616
 Phone: 727.461.1111
 Fax: 727.461.1112
 www.powellassociates.com

YOMAMA'S Food Company
 Interior Remodeling
 195 E. Bay Street, Suite 1000
 Clearwater, Florida 34616

Floor Plan
 24-211
 A-11



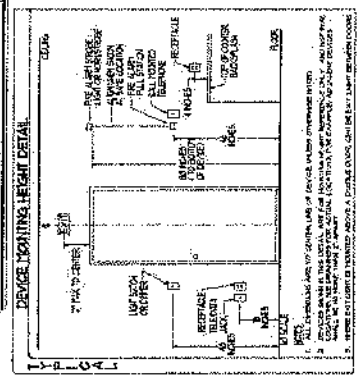
Ceiling - Lighting Plan

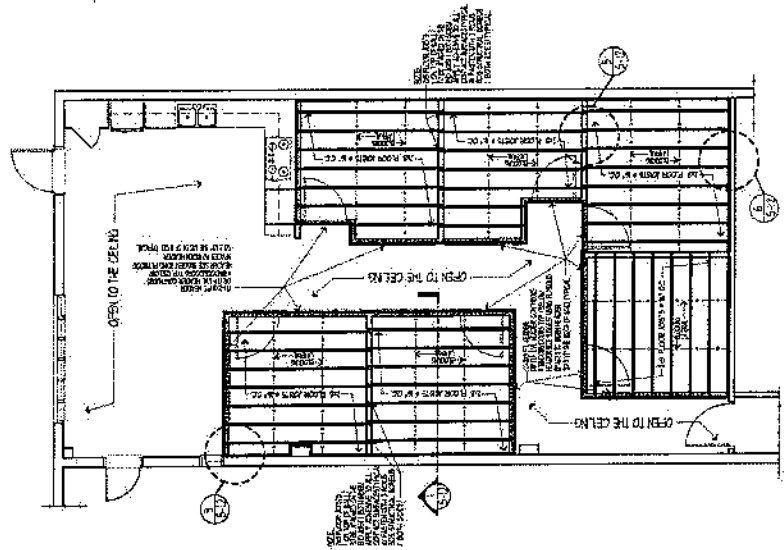
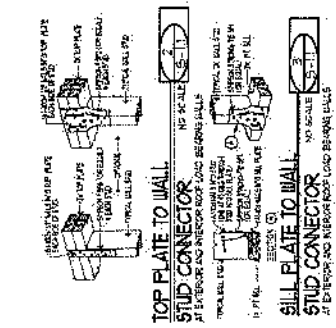
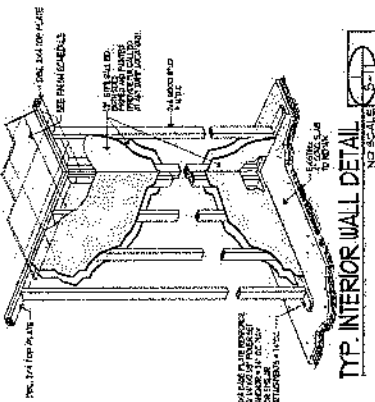


NOTES:
 1. ALL WORK TO COMPLY WITH LOCAL CODES.
 2. ELECTRICAL CONTRACTOR TO PROVIDE AND INSTALL ALL MATERIALS AND EQUIPMENT.
 3. ALL TELEPHONE WORK TO BE COMPLETED PRIOR TO THE COMMENCEMENT OF ELECTRICAL WORK.
 4. ALL TELEPHONE WORK TO BE COMPLETED PRIOR TO THE COMMENCEMENT OF ELECTRICAL WORK.
 5. ALL TELEPHONE WORK TO BE COMPLETED PRIOR TO THE COMMENCEMENT OF ELECTRICAL WORK.
 6. ALL TELEPHONE WORK TO BE COMPLETED PRIOR TO THE COMMENCEMENT OF ELECTRICAL WORK.
 7. ALL TELEPHONE WORK TO BE COMPLETED PRIOR TO THE COMMENCEMENT OF ELECTRICAL WORK.
 8. ALL TELEPHONE WORK TO BE COMPLETED PRIOR TO THE COMMENCEMENT OF ELECTRICAL WORK.
 9. ALL TELEPHONE WORK TO BE COMPLETED PRIOR TO THE COMMENCEMENT OF ELECTRICAL WORK.
 10. ALL TELEPHONE WORK TO BE COMPLETED PRIOR TO THE COMMENCEMENT OF ELECTRICAL WORK.

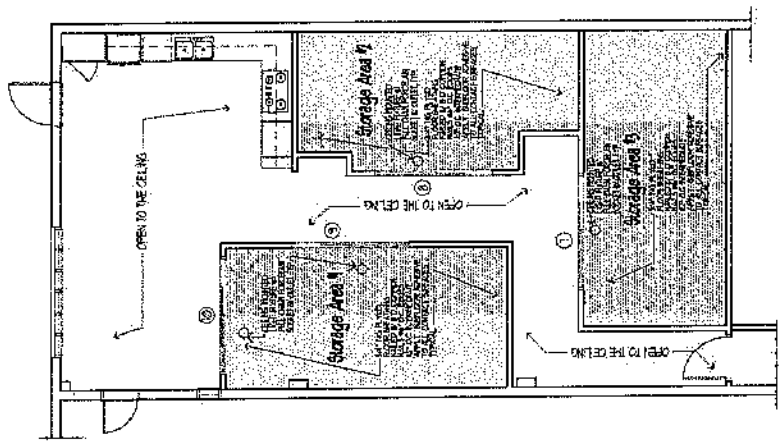
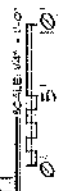
ELECTRICAL LEGEND
 NOTE: ALL SYMBOLS ARE TO BE INSTALLED IN ACCORDANCE WITH THE NATIONAL ELECTRICAL CODE.

- 4-FLR. OUTLET
- 3-PR. OUTLET
- RESTRICTED OUTLET
- 1-1/2" SWITCH
- 2-1/2" SWITCH
- 3-1/2" SWITCH
- 4-PR. SWITCH
- 5-PR. SWITCH
- 6-PR. SWITCH
- 7-PR. SWITCH
- 8-PR. SWITCH
- 9-PR. SWITCH
- 10-PR. SWITCH
- 11-PR. SWITCH
- 12-PR. SWITCH
- 13-PR. SWITCH
- 14-PR. SWITCH
- 15-PR. SWITCH
- 16-PR. SWITCH
- 17-PR. SWITCH
- 18-PR. SWITCH
- 19-PR. SWITCH
- 20-PR. SWITCH
- 21-PR. SWITCH
- 22-PR. SWITCH
- 23-PR. SWITCH
- 24-PR. SWITCH
- 25-PR. SWITCH
- 26-PR. SWITCH
- 27-PR. SWITCH
- 28-PR. SWITCH
- 29-PR. SWITCH
- 30-PR. SWITCH
- 31-PR. SWITCH
- 32-PR. SWITCH
- 33-PR. SWITCH
- 34-PR. SWITCH
- 35-PR. SWITCH
- 36-PR. SWITCH
- 37-PR. SWITCH
- 38-PR. SWITCH
- 39-PR. SWITCH
- 40-PR. SWITCH
- 41-PR. SWITCH
- 42-PR. SWITCH
- 43-PR. SWITCH
- 44-PR. SWITCH
- 45-PR. SWITCH
- 46-PR. SWITCH
- 47-PR. SWITCH
- 48-PR. SWITCH
- 49-PR. SWITCH
- 50-PR. SWITCH





Floor Framing Plan



Floor Storage Plan

